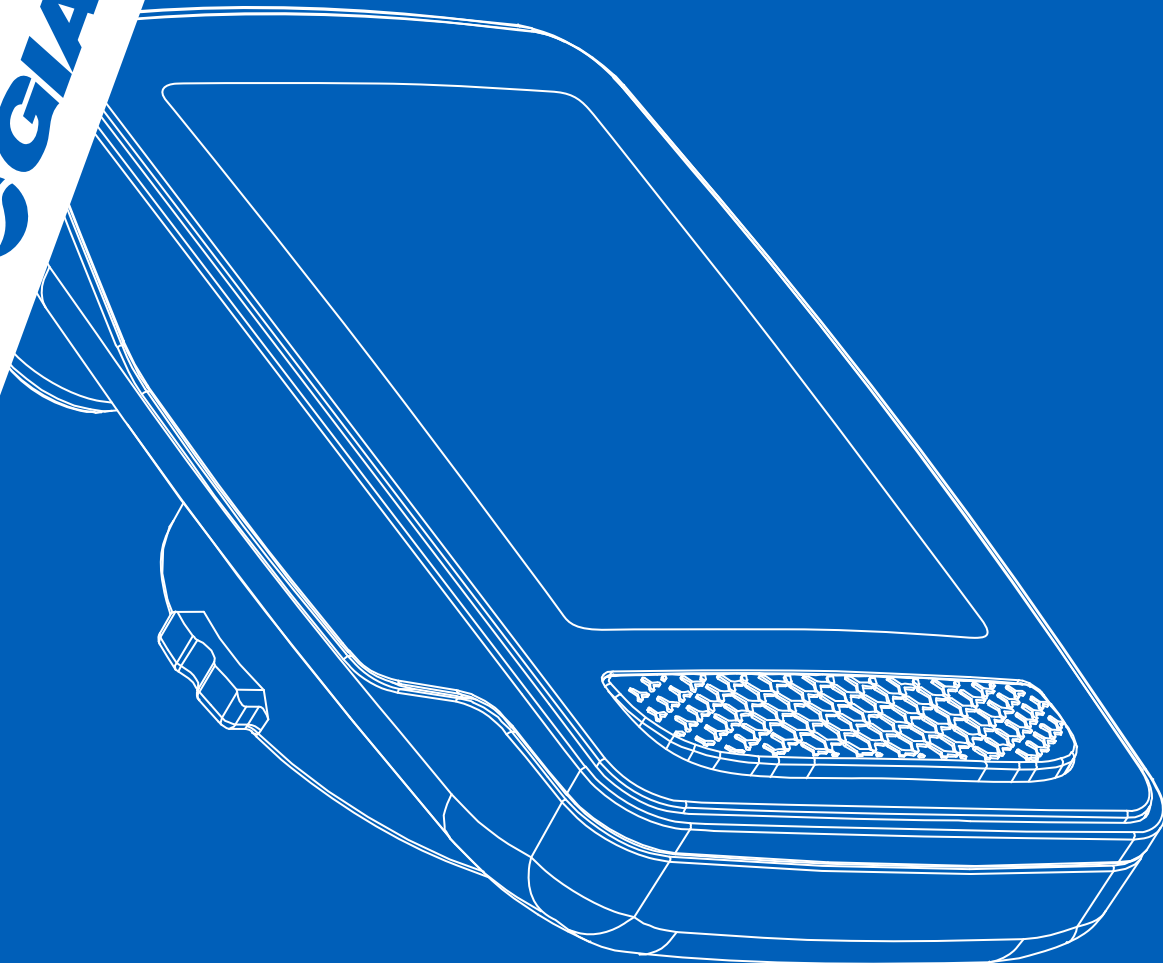


GIANT



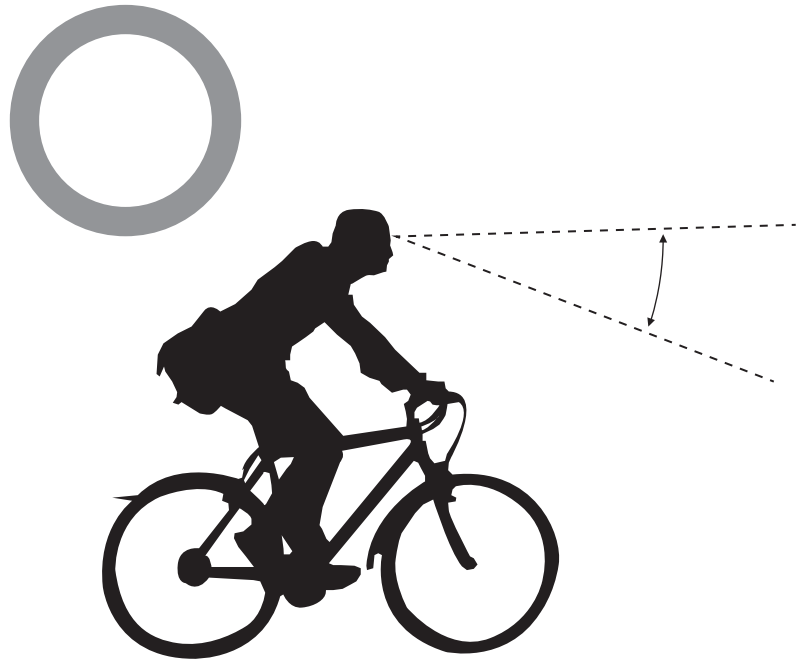
AXACT 14W

Analog Wireless Computer
User's Manual

- English -

Table of Contents

1	Preface	6	Setup mode	11	Reset trip logs / reset
2	Package contents	7	Wheel circumference setup	12	Troubleshooting
3	Installation instructions	8	Time setup	13	Specifications
4	Display & buttons	9	Unit / weight setup		
5	Display modes	10	Smart backlight / maintenance alert setup		



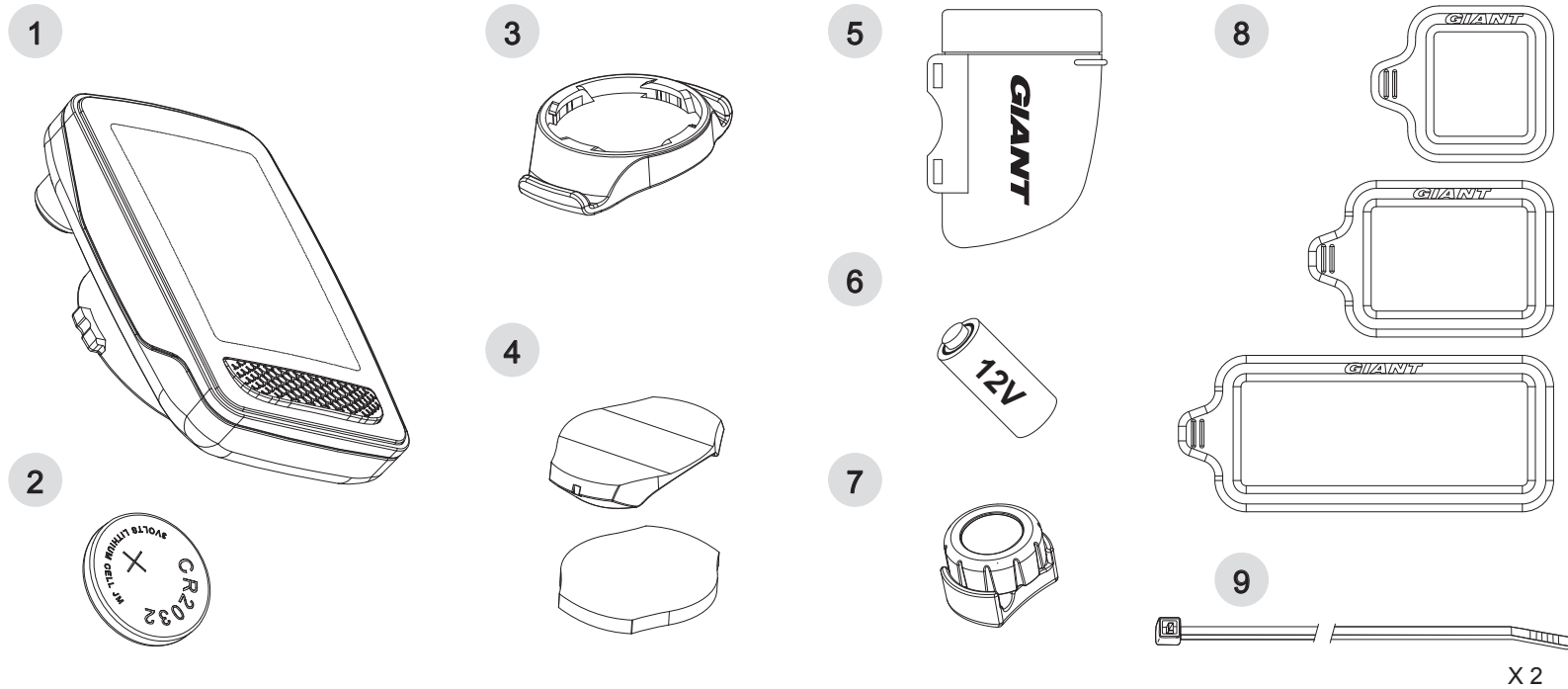
Thank you for purchasing Giant's Axact 14w Analog Wireless Computer. For your safety, we recommend that you look straight ahead while riding. Avoid staring at the computer screen. This may compromise your awareness, leading to a serious accident.

Ensure that the head unit has been paired with the speed sensor before using your computer. If you have any questions or problems, please contact your local Giant dealer or go to Giant's official website: www.giant-bicycle.com

Let's go ride!

Package contents

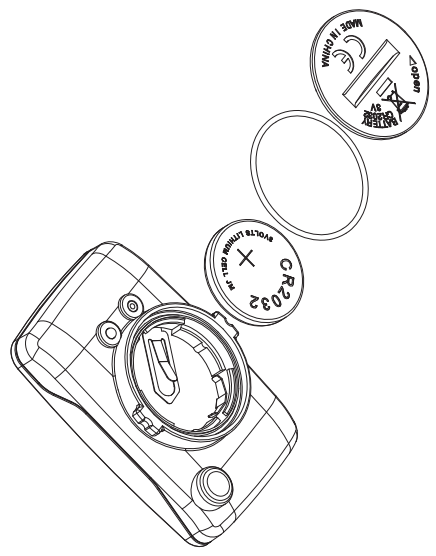
2



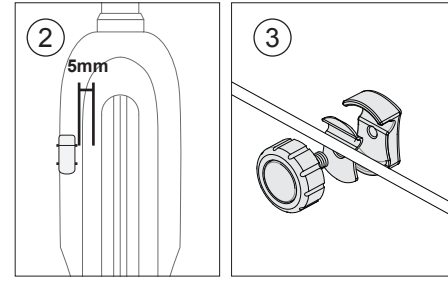
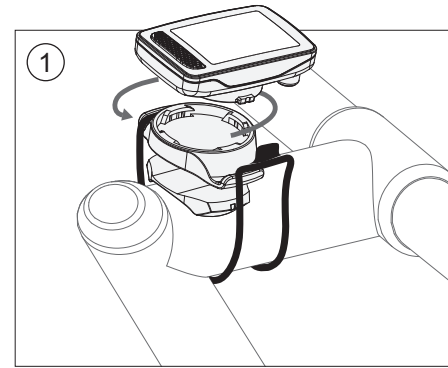
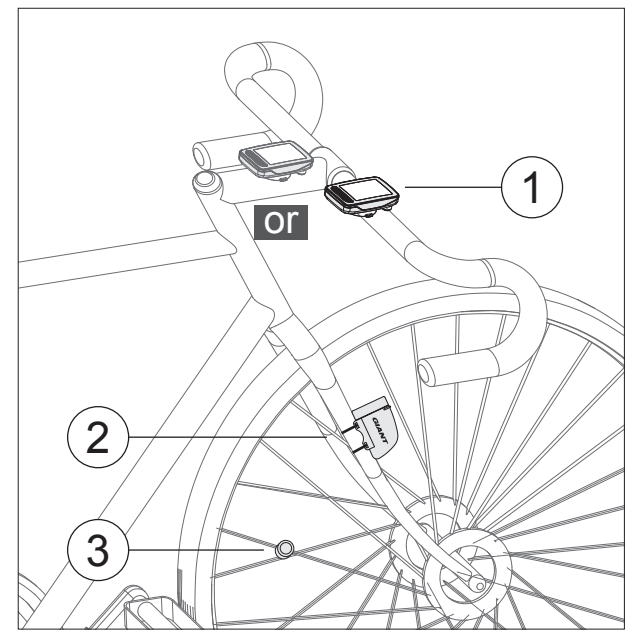
1. Head unit
2. Head unit battery
3. Handlebar/stem mount
4. Mount base pads (x 2)
5. Speed sensor
6. Speed sensor battery
7. Wheel magnet
8. Rubber straps (x 3)
9. Zip ties (x 2)

Installation instructions

Battery installation



Mounting



Install the battery in the back of the main unit. Use a coin to open and close the cover.

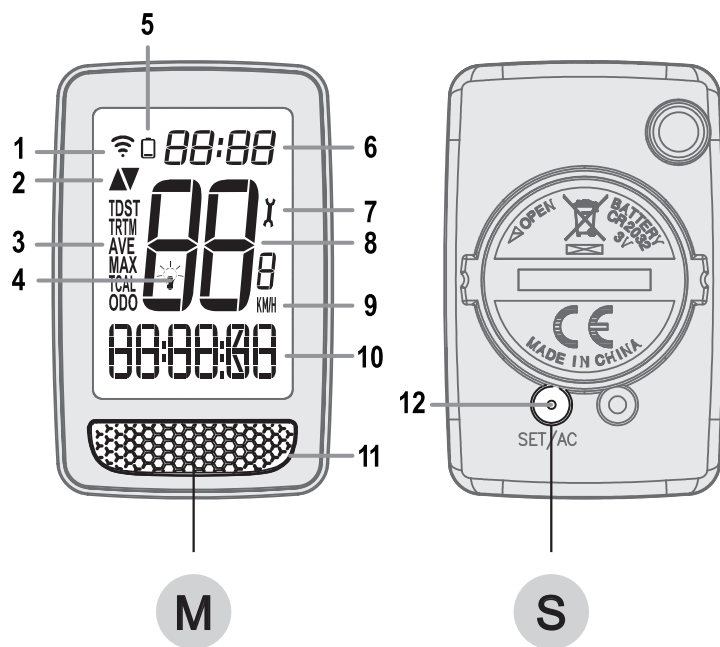
Install the head unit mount with the appropriate base pad and rubber strap. The head unit can be mounted in three different locations:

- (A) Stem
- (B) Handlebar
- (C) Handlebar extension (optional).

Mount the speed sensor to the fork with the zip ties. Mount the magnet to a spoke and ensure the magnet passes within 5mm of the the speed sensor.

Note: Speed sensor will not function if the distance between the magnet and the sensor is more than 5mm.

Complete display



1. Wireless signal	Flashes when a signal is received from the speed sensor
2. Pace Arrow	<input type="checkbox"/> = current speed is faster than average speed. <input type="checkbox"/> = current speed is slower than average speed.
3. Function	Indicates function displayed in 10.
DST	Trip distance
TDST	Total trip distance
RTM	Riding time
TRTM	Total riding time
AVE	Average speed
MAX	Maximum speed
CAL	Calories burnt
TCAL	Total calories burned
ODO	Odometer

4. Smart backlight	Press the M key to turn on the backlight. Backlight will turn on only during its preconfigured "on" time period.
5. Low battery	Appears when battery voltage drops below 2.4V. Replace battery soon.
6. Clock	12/24-hour format
7. Maintenance reminder	Appears when preconfigured maintenance mileage is reached
8. Speed	Displays current speed
9. Unit	km/kg or mi/lb
10. Function values	Displays value of the function indicated in field 4.
11. Function keys	M Press the M key M: Select function M2 Press the M key for 2 seconds M2: Confirm & reset
12. Set/AC	Press the Set/AC key to enter the setup menu.

Sleep display

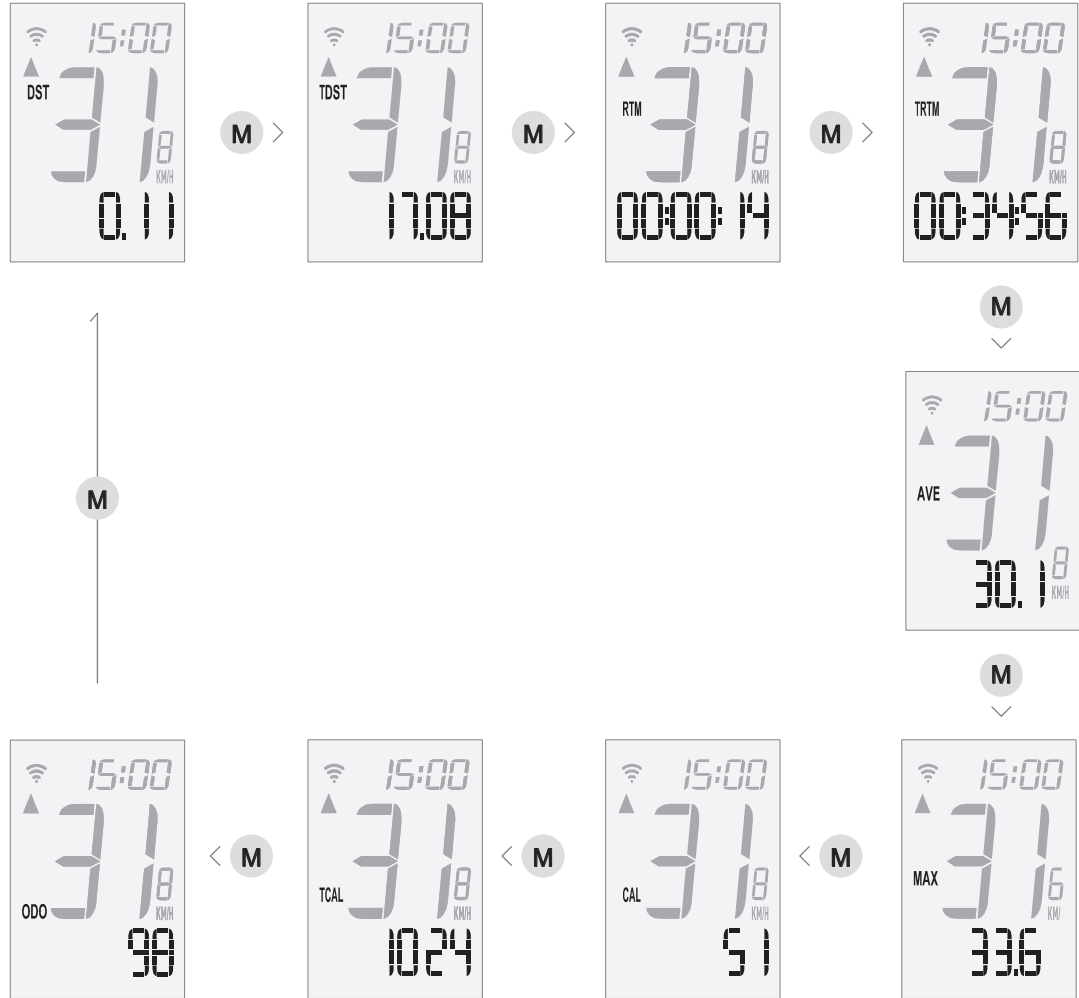


Display modes



M

Press and release M key

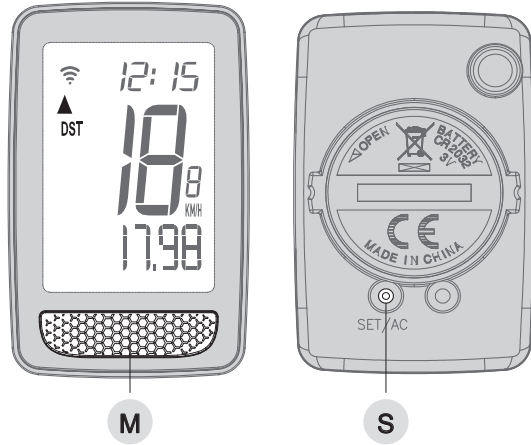


Press the M key to cycle between functions

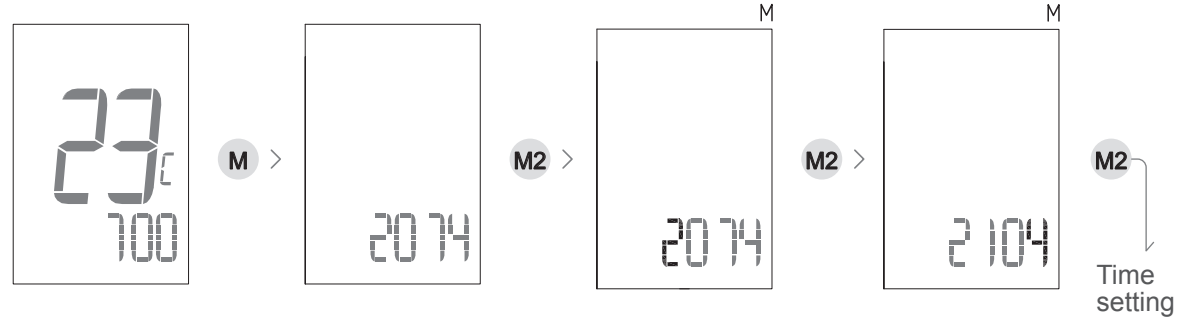
Display	Functions
DST	Trip distance
TDST	Total trip distance
RTM	Riding time
TRTM	Total riding time
AVE	Average speed
MAX	Maximum speed
CAL	Calories burned
TCAL	Total calories burned
ODO	Odometer

Setup Mode

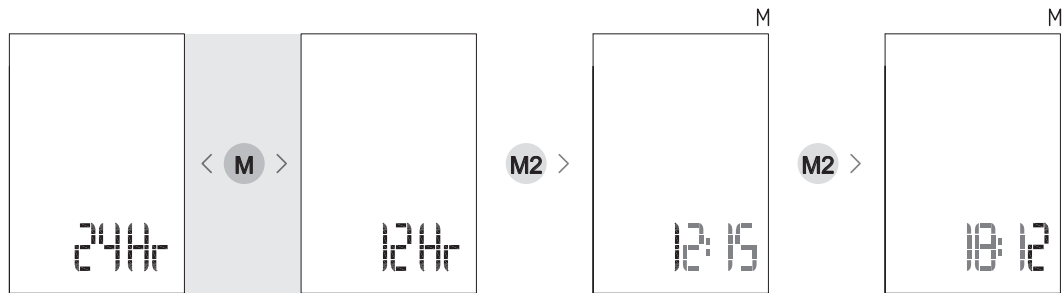
- M** Press the M key and release it
- M2** Press the M key for 2 seconds and release it
- S** Press the S key and release it



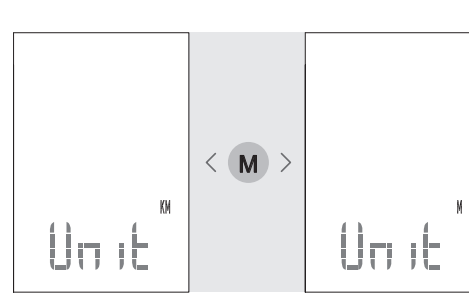
1. Wheel circumference setting



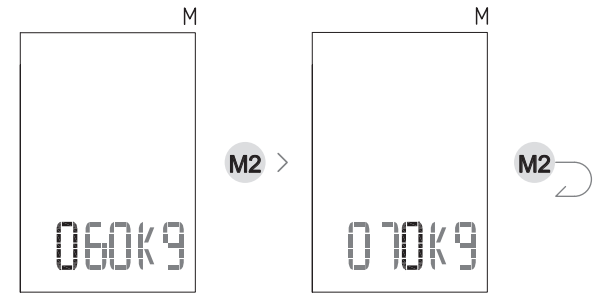
2. Time setting



3. Unit setting

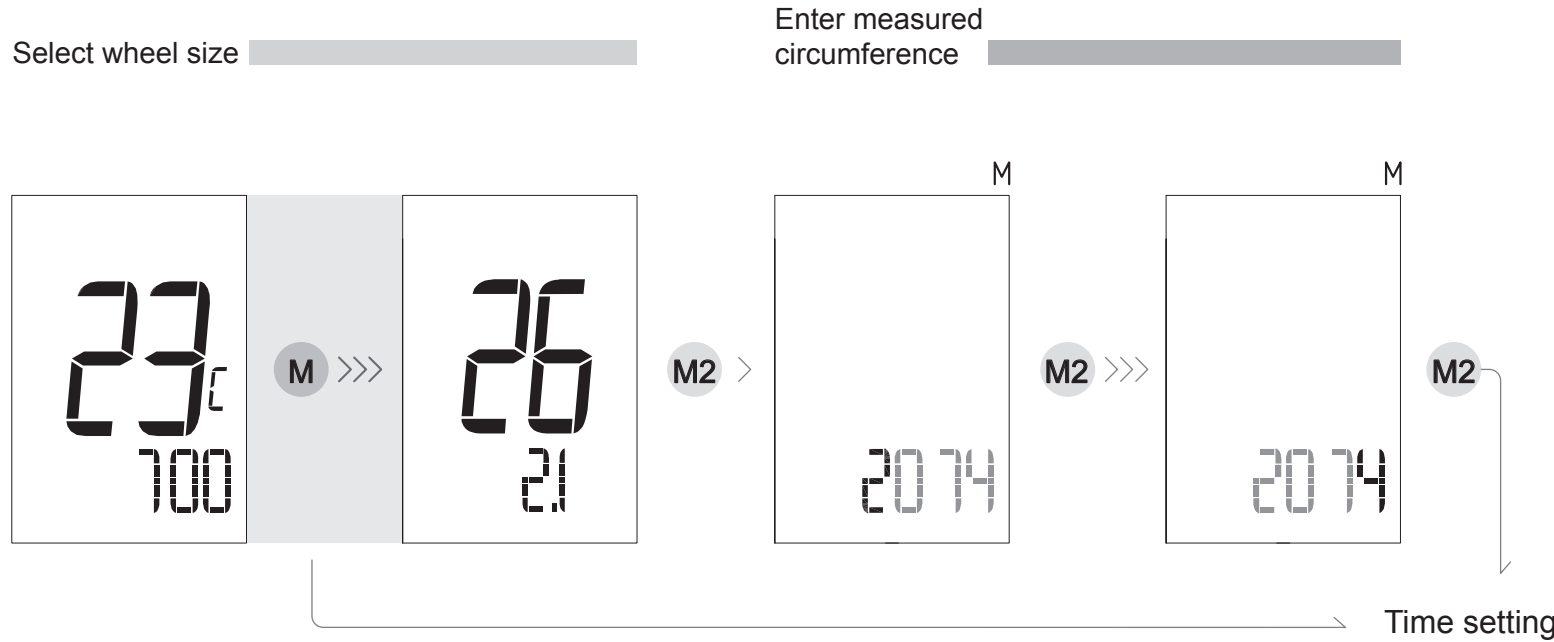


4. Weight setting

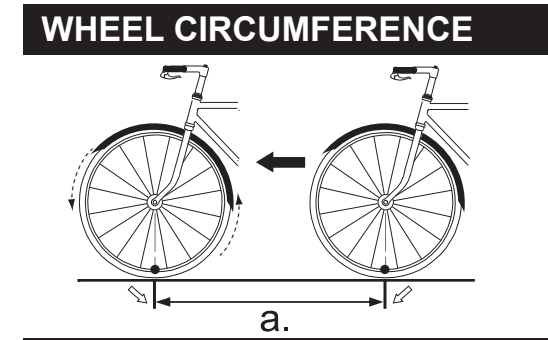


Wheel circumference setup

Press S to enter setup mode. Press M to select from ten pre-programmed wheel sizes. If wheel size is not shown, enter a measured wheel circumference. Follow the setup process and press M to select a value and press M2 to confirm it. After the size or circumference is entered, press M2 to go to time setup.



*Same as Bike2 setting



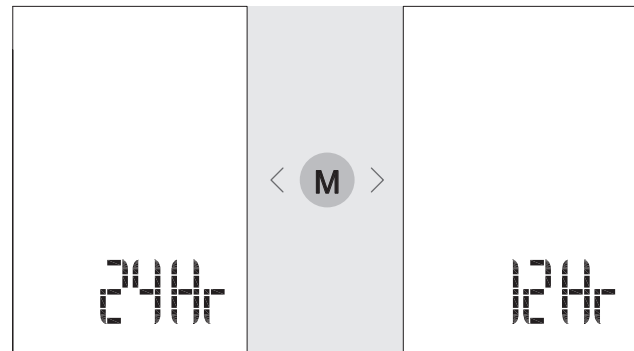
EASY CALIBRATION & CIRCUMFERENCE REFERENCE TABLE

Tire Size	a. (mm)
700x20C	2086
700x23C	2096
700x25C	2105
700x28C	2136
700x32C	2155
700x35C	2168
700x38C	2180
600x23C	1930
26x1.5	2010
26x1.90	2045
26x1.95	2050
26x2.0	2055
26x2.1	2068
26x2.2	2075
Custom	0-3999

Time setup

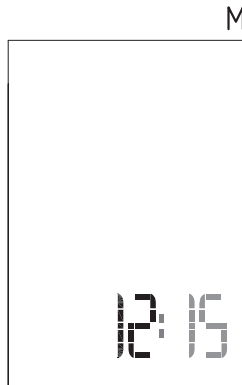
After entering time setup mode, press M to select 12Hr or 24Hr. Press M2 to confirm selection. Press M to select hour value. Press M2 to confirm. Press M to select minute value. Press M2 to move to unit/weight setup.

Set time format



M2 >

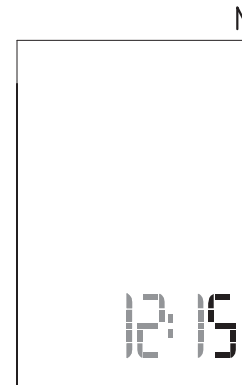
Set time



M2 >



M2 >



M2

Unit/weight setup

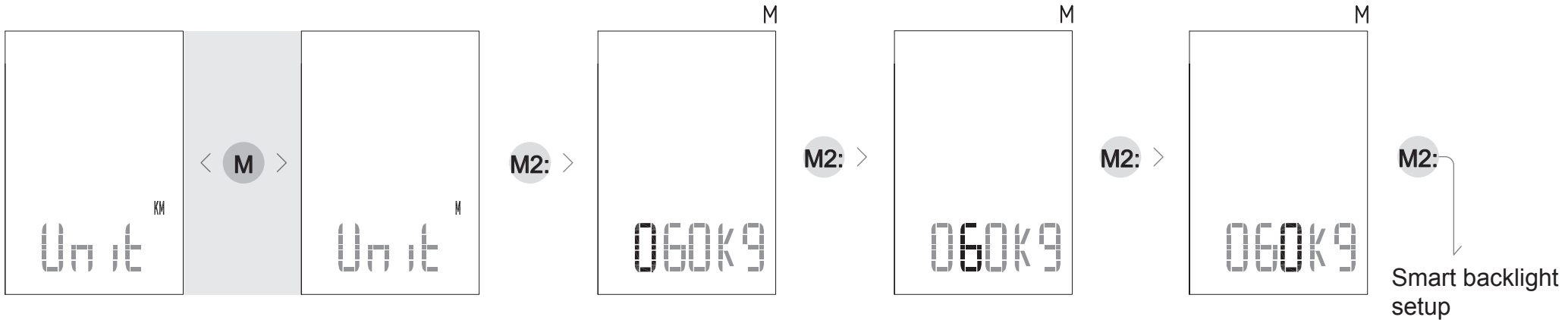
Unit/weight setup

After entering unit/weight setup mode, press M to select km or mi units.
Press M2 to confirm. Press M to select your weight. Press M2 to advance to next number. Press M2 to move to smart backlight setup.

Unit setting



Weight setting



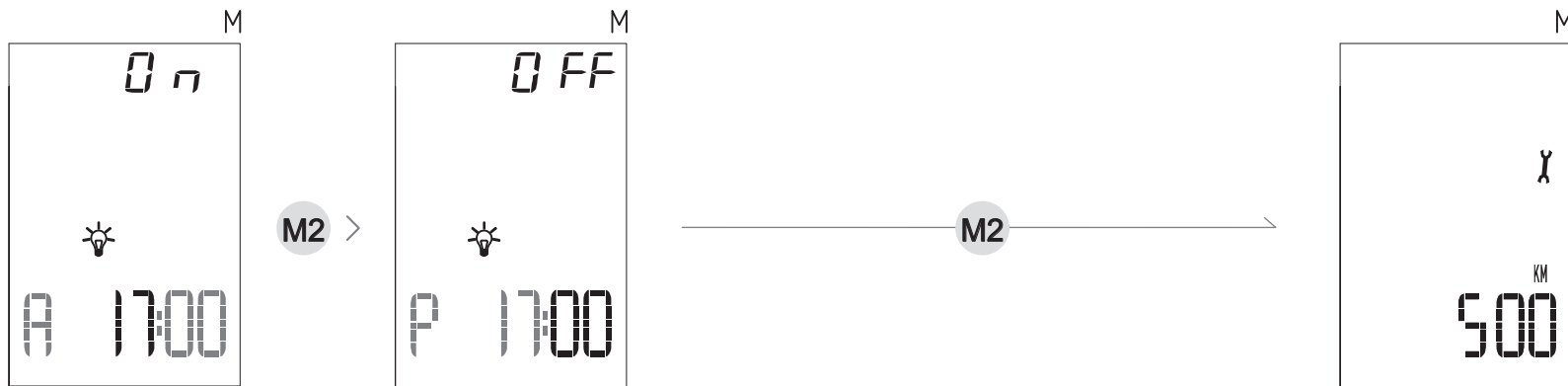
Smart backlight setup / maintenance alert setup


After entering smart backlight setup, press M to select smart backlight "on" time. Press M2 to confirm. Press M to select smart backlight "off" time. Press M2 to move to maintenance alert setup.

After entering maintenance alert mode, press M to set maintenance alert to your desired distance (300-700 km or 180-430 mi). Press M2 to exit setup.

Smart backlight setup

Maintenance alert setup



If set to 500 km, the computer will display  every time the accumulated trip distance reaches 500 km. Trip distance and total distance are logged separately. Press M2 or ride 50 km to clear the alert symbol.

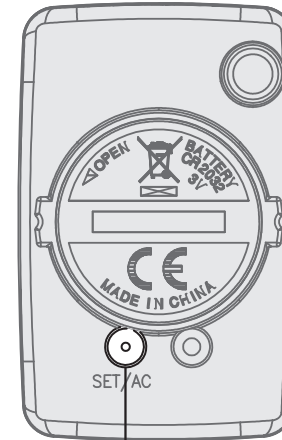
Reset trip logs



M

To reset DST, RTM, AVE, MAX, & CAL, navigate to any of those modes and press M for 3 seconds. To reset TDST, TRTM, & TCAL, navigate to any of those modes and press M for 3 seconds.

Reset



S

If the computer does not function normally, or the screen is blank after the battery is installed, press the S key on the back of the head unit to reset the computer to factory default settings.

Problem	Possible cause	Solution
No image on screen	Battery is not installed.	Install battery
	Battery is dead	Replace battery
	Battery is installed backwards	Install battery correctly with positive pole facing outward
Speed is not displayed	Gap between the sensor and magnet is too large	Adjust the sensor or magnet to reduce the gap to less than 5mm

Problem	Possible cause	Solution
Abnormal numbers are displayed	Gap between the sensor and magnet is too large	Adjust the sensor or magnet to reduce the gap to less than 5mm
	Sensor battery voltage is low	Replace sensor battery
	Electromagnetic interference nearby; e.g. computer, transmitting station, radar station, etc.	Move away from the area with interference

Current speed	0 ~ 99.9km/mi	Riding time	0:00:00 ~ 99:59:59
Average speed	0 ~ 99.9km/mi	Total riding time	0:00:00 ~ 99:59:59
Maximum speed	0 ~ 99.9km/mi	Time (12/24)	12:00:00 / 0:00:00
Trip distance	0 ~ 999.9km/mi	Calories burnt	0 ~ 9,999Kcal
Total trip distance	0 ~ 999.9km/mi	Total calories burnt	0 ~ 99,999Kcal
Accumulated trip distance	0 ~ 99,999km/mi	Low battery alert	2.4V

Smart backlight	12:00:00 / 0:00:00	Battery life: 1h/day	12 month
Units	km/kg, mi/lb	Operating temperature	-10 ~ + 50 °C 14 ~ 122 °F
Auto hibernation	25 minutes	Storage temperature	-20 ~ + 60 °C -4 ~ 140 °F
Auto power-on	Auto power-on upon receipt of signal (must be installed on the base)	Sensing signals	0.5 ~ 12Hz
Maintenance alert	300-700km, 180-430 mi	Display system	7 segments
Battery type	CR2032	Language	English