

# Smart Gateway Service Kit

Version 1.0 - March 2023

**This Kit Services the following models:**

**Smart Gateway (SG) Range**

Year	Model
20-23	Amiti E+ 1 & 2
21-23	Amiti E+ 3
22-23	Embolden E+ (ALL)
21-23	Explore E+ 1/2/3
21-22	Fastroad E+ (ALL)
21-23	Intrigue X E+ (ALL)
22-23	Intrigue E+ (ALL)
22	PakYak E+
22-23	Reign E+ (ALL)
21	Revolt E+
21	Road E+ (ALL)
21-23	Stance E+ Pro (ALL)
22-23	Stance E+ 1
22	Stance E+ 2 (625wh Battery)
22-23	Talon E+ (ALL)
22-23	Tempt E+ (ALL)
21-22	Thrive E+ (ALL)
21-22	Trance E+ (ALL)
21-23	Trance X E+ (ALL)
22-23	Voya E+ (ALL)
20-23	Amiti E+ 1 & 2
21-23	Amiti E+ 3
22-23	Embolden E+ (ALL)
21-23	Explore E+ 1/2/3
21-22	Fastroad E+ (ALL)
21-23	Intrigue X E+ (ALL)
22-23	Intrigue E+ (ALL)



**Page 2:** Smart Gateway Kit Contents

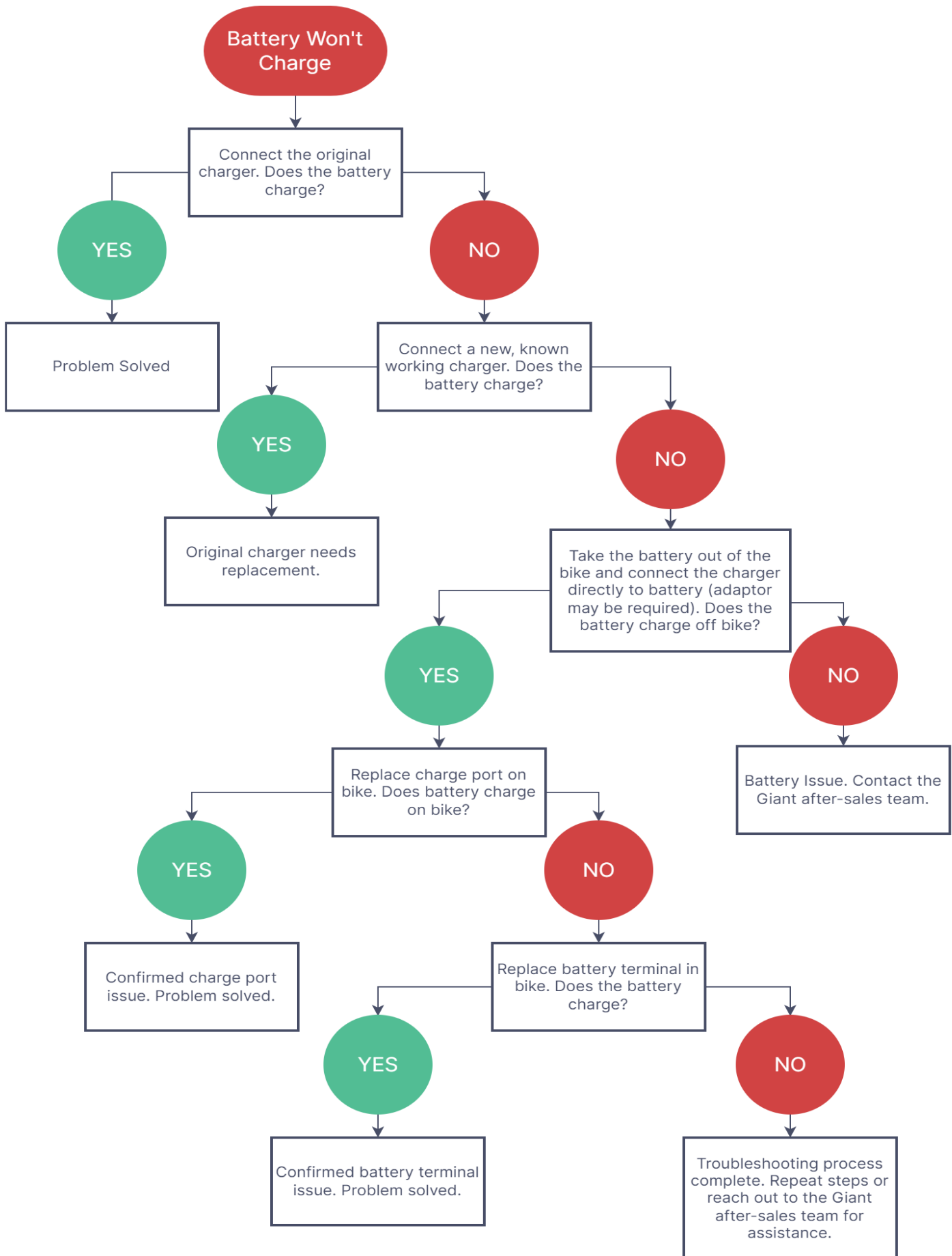
**Page 3-5:** Troubleshooting Flowcharts

**Page 6-15:** Kit Parts Overview

## SG Kit Contents

	Part Description	Part Sku	Part Photo
<b>A</b>	Smart Gateway Ergo Button Pad	245-FLRMSP-01	
<b>B</b>	Smart Gateway Ergo2 w/USB-C Button Pad	245-FLRMCT-01	
<b>C</b>	Smart Gateway Ergo3 Handlebar Ring Remote	2417-FLRMRG-01	
<b>D</b>	Smart Gateway Evo LCD Display	245-FLDPEV-01	
<b>E</b>	Smart Gateway GO Top Tube LED Button Pad	245-PGRMNF-01	
<b>F</b>	Smart Gateway Com/Bluetooth UnitRepla	245MPGSGYM-02V	
<b>G</b>	SG Downtube Cable Type 1 – 4 pin connector	147L-HCRCTM-01	
<b>H</b>	Wheel Speed Sensor Type 1–Dropout Mount	4430-FSJISS-01	
<b>I</b>	Wheel Speed Sensor Type 2–Stay Mount	245MYAMH-02V	
<b>J</b>	Battery Terminal Shim & Screws (Set of 3)	2120MWASHER-520V	
<b>K</b>	SyncDrive Motor Spider Tool – 36mm Socket	2520-36NUT-02V	
<b>L</b>	T25 Security Torx Wrench	2520-T25-01V	

## Battery Charge Issues:



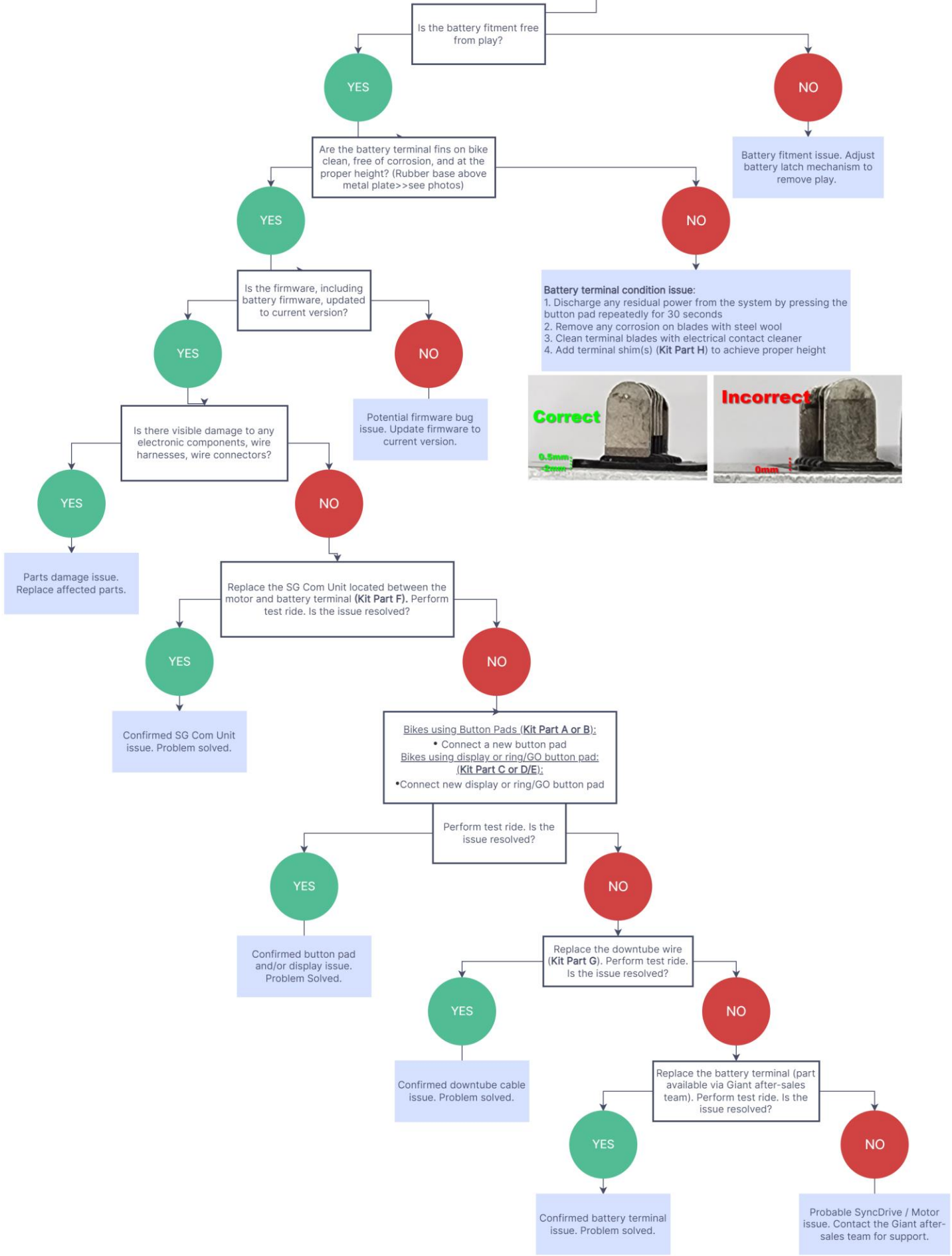
# Bike Cannot Power On:





# Power Cutoff During Use:

## Power Cutoff During Use



## 245-FLRMSP-01

21-23 RideControl Ergo SG LED Button Pad



### Functions

- Turns bike on and off
- Shows Charge Status
- Selects assist modes
- Selects Smart Assist (Automatic Mode)
- Activates Walk Assist
- Turns lights on and off
- Changes information screens
- Changes screen brightness

### Diagnostics

- Use in place of Ergo2 or Dash 2n1.

## 245MFLRMCT-01V

21 RideControl Ergo2 CT SG LED Remote Button Pad w/USB-C



### Functions

- Turns bike on and off
- Shows Charge Status
- Selects assist modes
- Selects Smart Assist (Automatic Mode)
- Activates Walk Assist
- Turns lights on and off
- Changes information screens
- Changes screen brightness

### Diagnostics

- Use in place of Ergo or Dash 2n1.

## 245-FLDPEV-05

21-23 RideControl Evo SG LCD Display



### Functions

- Responds to button pad
- Displays:
  - Current speed
  - Battery Charge Percentage
  - Assist mode
  - Trip info
    - Max Speed
    - Trip Distance
- Shows if lights are on and off

### Diagnostics

- Use in place of Dash 2n1 with Ergo or Ergo2.

### As an add-on accessory

- For any SG equipped bike with Ergo, Ergo2 or Dash 2n1



## 147L-HCRCTM-01

21 Main Display Cable SG 4pin 730mm(DC)



### Functions

- Connects RideControl System Button and Display to Smart Gateway Communication Unit, Battery, and Motor
- Connects lights to Motor and System Controls
- Connects lights to Battery

### Diagnostics

- on/off power issues
- lighting issues
- Assis mode issues
- Live Valve issues

### As an add-on accessory

- To add 6v lights to work with Ergo, Ergo2 and Dash 2n1
  - To add 36v lights

## 245MPGSGYM-02V (- 09V)

21-23 RideControl SMART GATEWAY SG Com Unit



### Functions

- Holds bike's operating system programming and Bluetooth/ANT+ Radio
- Reads Button Functions to communicate with motor
- Broadcasts Speed to Display and Phone App
- Sends Battery info to Display and Phone App

### Diagnostics

- On/Off Power issue
- Programming issues
- Speed issues
- lighting issues
- Assis mode issues
- Phone App issues

## 245-PGRMNF-01

22 RideControl Go SG Top Tube LED Control Button



### Functions

- Power on/off
- Changing Modes
- Connects to Ergo3

### Diagnostics

- On/Off Power issue
- Assis mode issues

## 2417-FLRMRG-01

22 RideControl Ergo3 Remote Ring SG 750mm



### Functions

- Changing Modes
- Walk Assist
- Connects to RideControl Go

### Diagnostics

- On/Off Power issue
- Assis mode issues
- Walk Assist issues

## 4430-FSJSS-01

20-23 Wheel Speed Sensor (Pro/Sport1) Integrated 600mm



### Functions

- Speed info to motor

### Diagnostics

- Speed issues



## 245MYAMH-02V

17-21 Speed Sensor Chain Stay Mounted 700mm



### Functions

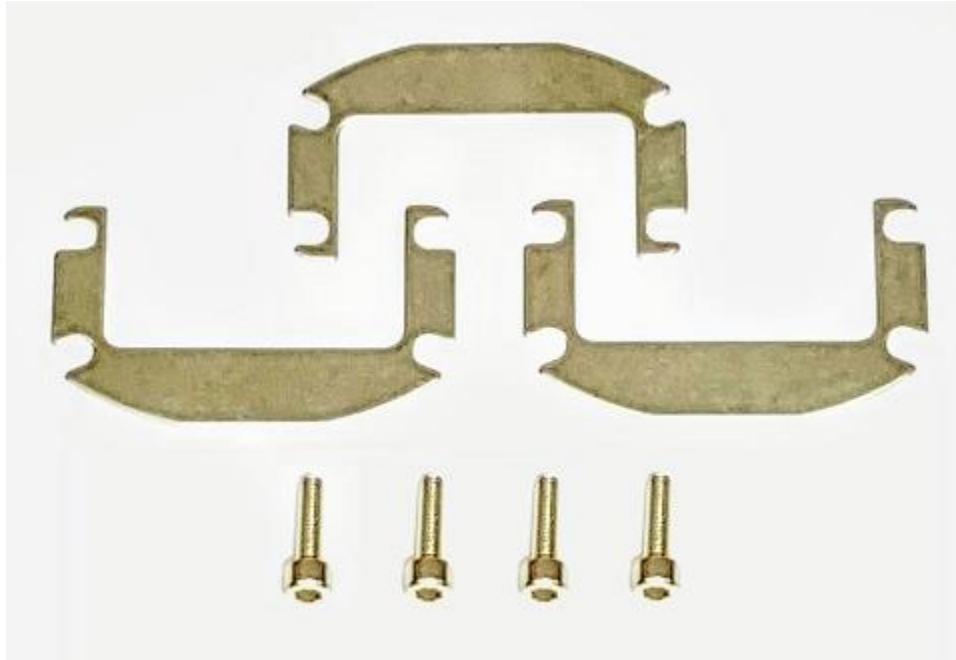
- Speed info to motor

### Diagnostics

- Speed issues

## 2120MWASHER-520V

19+ Integrated Battery Terminal SHIM (3 w/screws)



### Functions

- Alters height of terminal blades.

### Diagnostics

- Power issues
- Charging issues

## 2520-36NUT-02V

17+ Sport Life Motor 36mm Spider Lock Ring Tool 3/8 Socket



### Functions

- Chainring Sider Removal for Core, Life, Sport Motors

## 2520-T25-01V

17-22 E-Bike Security Pin-Hole Torx Wrench T25



### Functions

- Remove chainstay mounted speed sensors
- Remove and Adjust EMTB Battery Locks