

GIANT

Liv

momentum



AEGIS TIRE CHECKER

USER MANUAL



Aegis Tire Checker

The Aegis Tire Checker is a smart sensor that monitors the tire pressure real-time for ensuring the best performance and rider safety. The fully automatic Tire Checker will be activated instantly once the bike is turned on, getting you well prepared before hitting on the road. An abnormal pressure alert will notify through either the remote controls or RideControl App once the tire pressure researches the upper/lower limit or has a sudden drop.

Specifications

Dimension	35 x 23 x 61mm
Weight	18g/each (w/battery)
Operating Voltage	2.6-3.2V
Operating Temperature	-20~60°C (-4°F~140°F)
Storage Temperature	-20~80°C (-4°F~176°F)
Pressure Monitoring Range	0~135psi
Battery	CR1632, DC 3V, 140mAh
Battery Life	600 hours
Data Transfer	Bluetooth
Applicable Valve Type	Presta
Dust and Water protection	IP67
Applicable valve stem length	16~24mm

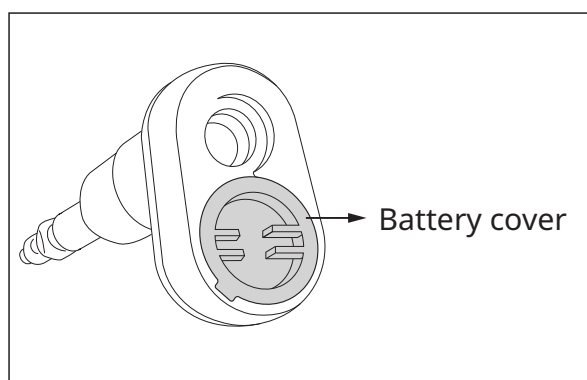
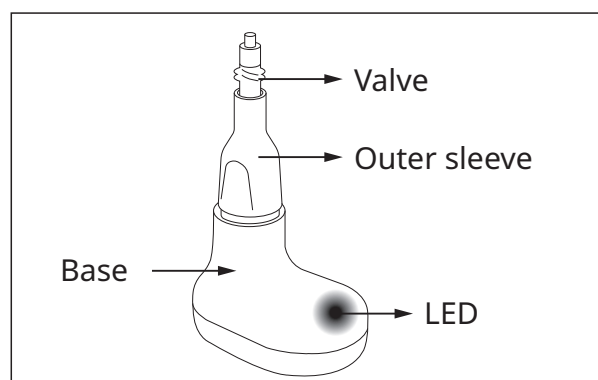


WARNING

- Never dispose of batteries in a fire.
- Do not use sharp or conductive objects to remove the battery.
- **Coin cell:** Coin batteries are hazardous and must be kept away from children. Never put batteries in mouth or in any part of the body. Severe or fatal injuries can occur within 2 hours if swallowed or placed inside the body. If this occurs or is suspected, seek medical attention immediately.



Overview

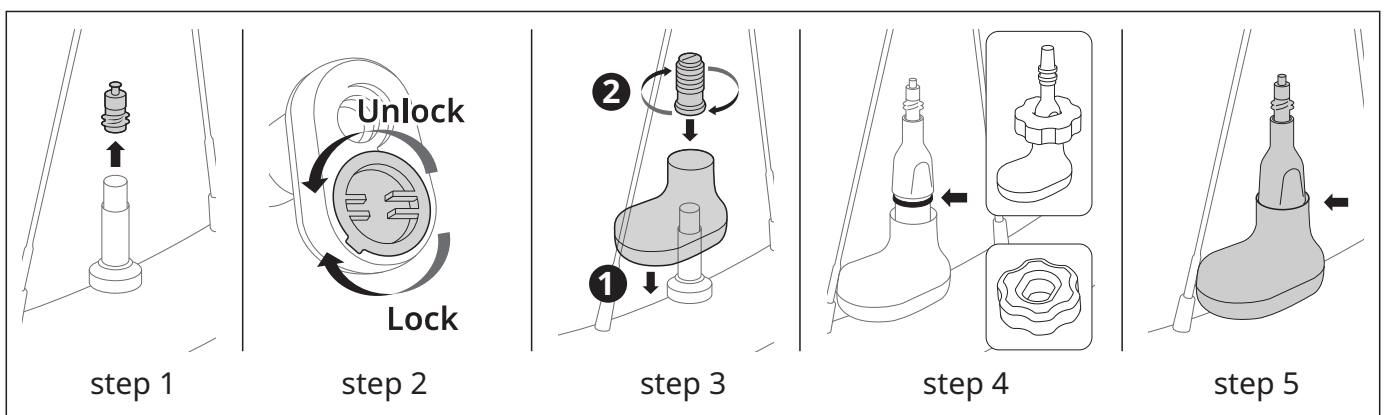


Installation

Please follow the instructions to install the Aegis Tire Checker.

- Step1: Remove the valve core from the Presta valve.
- Step2: Turn the battery cover counterclockwise to open it to remove the battery insulation film in the Aegis Tire Checker.
- Step3: Align and insert Tire Checker to valve stem. Hold in place and tighten inner sleeve by hand or 3mm hex wrench (Torque: 0.3Nm).
- Step4: Hold Tire Checker and tighten outer valve until o-ring is NOT VISIBLE. Use attached lock tool for easy assembly (Torque: 0.8Nm~1.25Nm).
- Step5: If installed properly, it should seat firmly on the rim without any play. You cannot even rotate it easily.

Note Follow specified torque values to prevent damage.



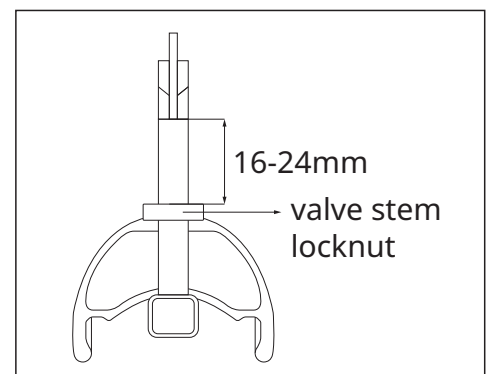
INFO

Please also pump the tire to test the airtight before hitting on the road for ensuring the Aegis Tire Checker is well settled.



NOTICE

- The Aegis Tire Checker is only compatible with Presta valve, both inner tube or tubeless system is applicable but the valve core needs to be removable.
- The Aegis Tire Checker has an applicable valve stem length ranging between 16-24mm, measuring from the lower level above the stem locknut to the top of the valve stem (not including the valve core).
- The Aegis Tire Checker parts will not be able to be engaged with each other if the stem length doesn't meet the applicable range.



The Aegis Tire Checker parts will not be able to be engaged with each other if the stem length doesn't meet the applicable range.

Pairing the Aegis Tire Checker with your e-bike

The Aegis Tire Checker needs to be paired with your e-bike before the first use. The pairing can be done by both the remote controls or RideControl app:

1. RideControl app: E-bike Setup > Aegis Tire Checker Setup > Add Front/Rear Aegis Tire Checker > Scan the QR code or key-in the ID number on the side of Aegis Tire Checker
2. Remote controls: Settings > Accessories > Tire pressure sensor > Select Front or Rear Aegis Tire Checker > Select Bluetooth > Start scanning > Select the corresponding ID number on the side of the Aegis Tire Checker.



INFO

- The ID number is 12 characters.
- Making sure to download the latest version of the RideControl App to support the Tire Checker features.

Settings & Use

You can always set up the alert threshold with your own preference and riding style through the RideControl app and remote controls.

1. You can set up preferred tire pressure alert threshold through both RideControl app and remote controls:
 - RideControl app: E-bike Setup > Aegis Tire Checker Setup
 - Remote controls: Settings > Accessories > Tire pressure sensor > Tire pressure limit
2. The tire pressure will be displayed not only in the startup animation following the battery level indication. You can also read the instant tire pressure by adding a data field in the riding screen or on the RideControl app in the Aegis Tire Checker setting menu.
3. The Aegis Tire Checker is ultra-sensitive. In general, by turning on the e-bike you can read the tire pressure instantly. If not, try to move the bike or roll the wheels to activate the tire checker.
4. The Aegis Tire Checker will notify you if the tire pressure is below/over the setting value or when the tire pressure has a rapid drop. The notification will be sent on both the e-bike display and RideControl app with acoustic alert. For your own safety, when warned with an abnormal tire pressure, please stop by and check if's a puncture or simply because the pressure is too low.
5. The LED indicator at the front side shows the status of the Aegis Tire Checker, refer to the chart below for detailed information.

Color	Behavior	Status
Green	Blinking (2 secs interval)	The Aegis Tire Checker is activated
Red	Blinking (2 secs interval)	Battery low
Red	Blinking (1 sec interval)	Abnormal tire pressure detected
Red and green	Blinking (1 sec interval)	The firmware is updating

Battery replacement

The Aegis Tire Checker has a claimed battery life for up to 600 hours, depending on the use case the actual number can be vary. If one of the events happens, it indicates the battery level is low, please replace with a CR1632 type coin battery:

- A red blinking LED on the tire checker.
- Battery low notification on the e-bike display.
- Battery low notification on the RideControl App.



WARNING

- Never dispose of batteries in a fire.
- Do not use sharp or conductive objects to remove the battery.
- Coin cell: Coin batteries are hazardous and must be kept away from children. Never put batteries in mouth or in any part of the body. Severe or fatal injuries can occur within 2 hours if swallowed or placed inside the body. If this occurs or is suspected, seek medical attention immediately.

Battery replacement

- The Aegis Tire Checker has a claimed battery life for up to 600 hours, depending on the use case the actual number can be vary. If one of the events happens, it indicates the battery level is low, please replace with a CR1632 type coin battery:
- A red blinking LED on the tire checker.
- Battery low notification on the e-bike display.
- Battery low notification on the RideControl App.



WARNING

- Never dispose of batteries in a fire.
- Do not use sharp or conductive objects to remove the battery.
- **Coin cell:** Coin batteries are hazardous and must be kept away from children. Never put batteries in mouth or in any part of the body. Severe or fatal injuries can occur within 2 hours if swallowed or placed inside the body. If this occurs or is suspected, seek medical attention immediately.



Safety information

Read the safety information and the manual before using. Improper use can cause damage of the component and/or injuries. Save the safety information and the manual for your future reference!

- Make sure not to be distracted by the Aegis Tire Checker during the ride! Do not be distracted by the display information.
- Make sure not to loose control of the e-bike when interacting with Aegis Tire Checker.
- Do not use the Aegis Tire Checker as a handle to lift up your e-bike! This can lead to irreparable damage of the component.

EU Declaration of conformity

We, Giant MFG. Co., Ltd., declare that the equipment is compliance with the requirement limits of applicable standards, in accordance with the RED Directive 2014/53/EU and UKCA-Radio Equipment Regulations 2017. The test record, data evaluation and Equipment Under Test (EUT) configurations represented herein are true and accurate under the standards herein specified.

- ETSI EN 301 489-1: V2.2.3 (2019-11)
- ETSI EN 301 489-17: V3.2.4 (2020-09)
- ETSI EN 300 328: V2.2.2 (2019-07)
- IEC 62368-1: 2018 and EN
- IEC 62368-1: 2020+A11:2020, and BS
- EN IEC 62368-1: 2020+A11: 2020
- N 62479 (2010)/BS EN 62479 (2010)

