

BICYCLE OPERATIONAL MANUAL

VIDA E+

momentum

Table of contents

1 Preface	2
2 Safety	4
3 Using your E-bike	8
3.1 Energy 700, Top Pull	8
3.2 Charger	10
3.2.1 Fast Charger 3A 48V	10
3.2.2 Charging	11
3.2.3 Charging time	12
3.3 SyncDrive Move S	13
3.4 RideControl Dash Core	13
3.5 E-Lock	17
3.6 Keys	18
3.7 Riding range	18
3.7.1 Factors that affect range	18
3.7.2 Best practices for riding range	19
4 Transport & Storage	20
5 Maintenance	22
6 Disposal	22
7 Legal documentation	23
7.1 Warranty	23
7.2 Exclusions	24
7.3 Disclaimer	24
7.4 FCC	25

1 Preface

More Power, More Fun.

Enjoying the ride has never been easier. With its new throttle assist and rear hub motor that delivers powerful support using speed, torque and cadence sensors to create a smooth and seamless experience, the new VIDA E+ helps you rediscover the joy of riding a bike. A low step-through design, smooth-riding suspension fork, and comfortable ride geometry make this fun-loving E-bike impossible to resist.

Momentum. Go Your Way.

Momentum bikes free you from the constraints of daily life. Empowering you to ride for clean living, fresh air, plus great stories and adventures along the way. Momentum gives you choices. Whatever the reason you're riding for, we're with you all the way. We create bikes for every journey, so you can go your own way.

How to use this manual

This document is intended as a short introduction to your new e-bike. It contains essential safety information, and provides a first look at some of the e-bike's main components and functions. Before using the e-bike, it is important to also visit the support section of the website, to view and/or download the extensive information available there. In addition to e-bike specific information, also make sure to read the general information in the Bicycle Owner's Manual.

Illustrations

Illustrations shown in this document may differ in detail from the exact configuration on your particular e-bike model. The illustrations are a general reference for instruction and description purposes only.

Symbols used in this manual



WARNING: Warns about a situation that can cause death, serious physical injury and/or heavy material damage if one does not obey the safety instructions.



CAUTION: Warns about a situation that can cause physical injury or material damage if one does not follow the safety instructions.



NOTICE: Provides important information to avoid problems.



INFO: Provides additional information.

Information resources & downloads



MOMENTUM: <https://www.momentum-biking.com/global/manuals>

For information on other bicycle parts and warranty, consult the general bicycle owner's manual.

Service and Support

This manual is not intended to be an extensive reference book about service, maintenance or repairs. Please contact your dealer for service and technical support.



Read all information in this manual carefully before you start riding the bike. Safety instructions are very important and should not be overlooked. By reading the manual you will have a better understanding of the general operation.

2 Safety

Safe use of the bicycle

Before using the e-bike on the open road, ride the bike in a secure area to get acquainted with riding a bike with electric pedalling support. Try all settings on the bike and get familiar with the results.



WARNING

- Regulation on E-bike and how, where to use it may be different by regions, when riding on road, please comply with local bicycle traffic laws and regulations.
- Use official Momentum gears for your bike and follow instruction in each accessory.
- Keep both hands on the grips on the handlebar and the brake levers within reach while riding, to be able to immediately respond to any circumstance. Failing to do so can cause you to lose control over the bicycle.
- Before every ride, perform a pre-ride check of the technical state of the bike and all essential bike functions, like steering and braking.
- Make sure the battery is properly placed and locked.
- Ensure that all fasteners are properly tightened.
- Make sure that there are no worn or damaged parts that may fail during the ride.
- To reduce the risk of injury, close supervision is necessary when the product is used near children.
- Do not put fingers or hands into the product.
- Do not use this product if the flexible power cord or output cable is frayed, has broken insulation, or any other signs of damage.



NOTICE

Save these instructions: This manual contains important safety and operating instructions.

Battery and Charger

Take all following information into account when handling the battery and the charger.



WARNING

- **Please follow the instructions to prevent the risk of fire, electric shock, or injury to persons.**
- Keep the battery away from children and pets.
- Keep the battery & charger away from water and open fire.
- Do not drop or subject the battery & charger to any big shocks.

- Charge the battery only with the charger that was supplied with the e-bike, or the spare-/replacement charger supplied by an official dealer.
- Always remove the battery when adjusting derailleur or lubricating chain. Placing your hands (or other body parts) anywhere on the drivetrain while the system is still powered, could result in sudden activation of the Sync-Drive motor.
- Do not use the battery & charger for other purposes.
- Never connect the battery's terminals with each other.
- Do not cover the battery & charger or place objects on top of it during charging.
- Do not leave the battery & charger unattended while charging.
- Disconnect the charger and the battery immediately if you notice a strange smell or smoke.
- In the unlikely case that the battery is on fire: NEVER try to put the fire out with water. Cover the fire with large amounts of sand, and call emergency services immediately.
- The battery and charger are not intended for use at elevations greater than 2000m above sea level.
- **High temperature:** Do not touch the surface with your bare hands which may lead to severe burn injuries.



CAUTION

Avoid contact with battery and charger during charging operation. The charger can become hot during charging.



NOTICE

When the battery has reached the end of the service life, it should be treated as hazardous waste material. It should not be disposed of in regular household trash. Ask your dealer for advice on proper disposal of the battery.

Load Limitation

The maximum gross vehicle weight for the VIDA E+ is 136kg (300 lbs). This includes the bike, rider, passenger(s), and any additional cargo or accessories.



WARNING

Never exceed the maximum total load limit.

Luggage Carrier



WARNING

- Always make sure that any luggage, child-seat feature or any other accessory fitted on the VIDA E+ is securely fitted in accordance with the manufacturer's instructions.
- Always make sure that there are no loose straps or other items that could get caught in the moving parts of the bicycle.
- Luggage should not obstruct the rider's view, or limit the proper operation of the e-bike in any way.



CAUTION

- Luggage can only be safely carried on the carrier(s). Do not attach luggage to any other part of the bike.
- The bicycle may behave differently (particularly with regard to steering and braking) when the luggage carrier is loaded.



NOTICE

It is recommended to check and adjust positioning of reflectors and lamps such that these are not obscured when luggage is attached to the luggage carrier.



INFO

It is recommended distribute luggage evenly between the two sides of the luggage carrier.

Accessories



WARNING

- Never exceed the total maximum load limit of the e-bike as stated elsewhere in this user manual.
- Always follow the instructions for installation, usage and safety included with each particular accessory.



CAUTION

- Always follow the child seat manufacturer's instructions for installation, usage and safety. Never modify any original parts of the E-bike to accommodate a child seat.
- Never exceed the carrier load capacity and/or total permissible load weight of the E-bike as stated elsewhere in this user manual.
- Please be aware that the use of a child seat can cause extra load stress and increased wear on the E-bike's electric and/or mechanical parts.

- If a child seat is used, and the bike is fitted with a saddle with exposed coil springs underneath the saddle, there is a substantial risk that the child's fingers can get injured from getting trapped in the coil springs. Please take appropriate steps to prevent the trapping of the child's fingers.
- Always consult the documentation that came with a carrier and/or consult your local dealer for installing instructions, maximum load, torque specifications, parts specifications, maximum compatible wheel size, trailer and child seat compatibility.
- For information about the name and address of the manufacturer, importer or representative, trademark, model and production batch number or reference, check the carrier's documentation and/or on the carrier itself.



NOTICE

If instructions are unclear or missing, take action to obtain the necessary information before installing and using the accessory.

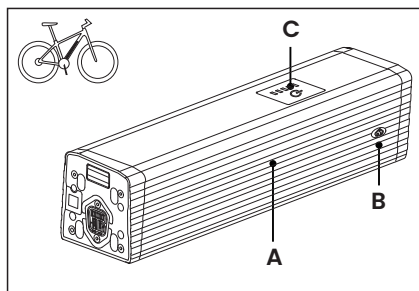
3 Using your E-bike

3.1 Energy 700, Top Pull

The Energy 700 is a rechargeable 46.8V battery with 687.9Wh total capacity. This large capacity battery utilizes 21700 Li-Ion cell technology. This Energy 700 battery is removable from the upside of the downtube. The key lock and safety latch enhance the security. It should be charged with the original charger that is supplied with the e-bike.

Parts Description

- A. Energy 700
- B. Charging socket
- C. Energy level indicator & button



WARNING

- Products with broken seals shall not be used and shall be immediately forwarded for appropriate recycling.
- Operate the battery at a device temperature between -10°C ~ 40°C (14°F ~ 104°F).
- Optimal performance above 0°C , performance may be reduced when device temperature is lower.
- Risk of fire – No user serviceable parts.



NOTICE

Technical specifications of the battery and other detailed information can be found on the printed label on the battery.

First use

A new Energy 700 battery is shipped in a protective 'hibernate' state. It must be activated before it can be used. Usually, the dealer will have activated and fully charged the Energy 700 battery before delivery. If not, you take the following steps to activate it:

- Connect the charger to the Energy 700 battery (see the topic on charging for details).
- Disconnect the charger from the Energy 700 battery.
- The Energy 700 battery is now activated.



INFO

- It is recommended to fully charge the Energy 700 battery before the first use. This would automatically activate the battery.
- The Energy 700 battery has a factory “hibernate” setup before shipping via a long press on the button for 15 seconds. If you accidentally trigger the hibernate state, please follow the first use guide to activate your battery.

Installation & Removal

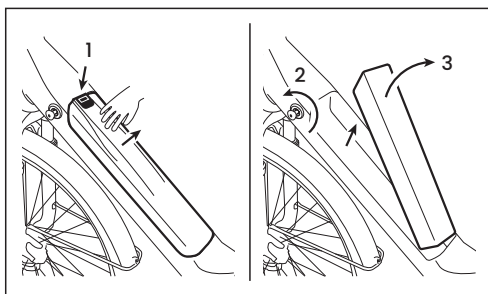


NOTICE

Always switch off the power first, before removing the battery.

Removing the Energy 700

- Press the slide latch on the battery cover and remove it from the upper side of the downtube.
- Insert the key and unlock the Energy 700 battery. The battery will be ejected slightly.
- Press the protection lever to fully unlock the Energy 700 battery.
- Remove the battery from the bike.



Installing the Energy 700

- Reverse removal procedure to install the Energy 700 battery.
- Make sure the connector slots are aligned correctly at the bottom.
- Push the top of the Energy 700 battery and make sure the battery is secured properly (a ‘click’ can be noticed while doing so).
- Replace the cover and pull out the key.

3.2 Charger



CAUTION

Use only a suitable charger provided with the e-bike or provided by Giant/Liv/Momentum.



NOTICE

Exact technical specifications and other details can be found on the printed label on the charger.

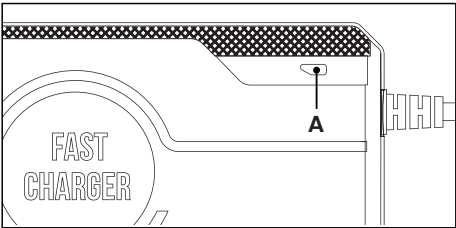
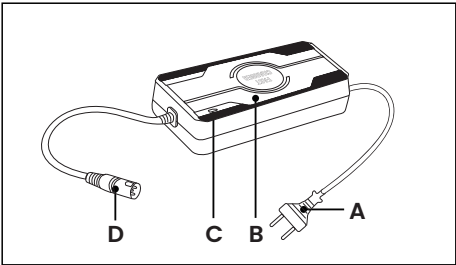
3.2.1 Fast Charger 3A 48V

Parts description

- A. AC socket (100V~240V)
- B. Charger
- C. Charge indicator LED
- D. Charge socket

LED Status Description

- A. LED



LED	Color	Behavior	Status
A	Red	On	Power on self test
A	Red	Blink	Charging issue
A	Green	On	No battery / Battery full

3.2.2 Charging

Charging the battery can be done in various ways. Choose the method that best suits your situation.



CAUTION

Use only a suitable charger provided with the e-bike or provided by Giant/Liv/Momentum.



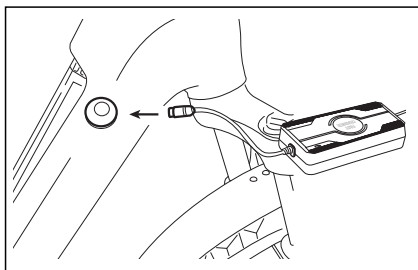
NOTICE

- The battery can be charged at any particular power level remaining.
- Charge the battery whenever necessary, but try to avoid very frequent, very short charges.
- Charge the battery at a device temperature between 0°C~30°C (32°F~86°F)(recommended temperature is 20°C/68°F)
- Charging below 0°C (32°F) or above 30°C (86°F) can lead to insufficient charging and can have a negative impact on the battery life cycle.
- Make sure the bike is steady and standing firmly when charging the battery on the bike.
- Do not sit on the bike, move the bike or rotate the cranks while the charger is connected to the bike.

With the Energy 700 attached to the bike

Start charging

- Connect the charger to the charge port of the Energy 700 battery.
- Connect the charger to an AC outlet.
- The charging process starts.



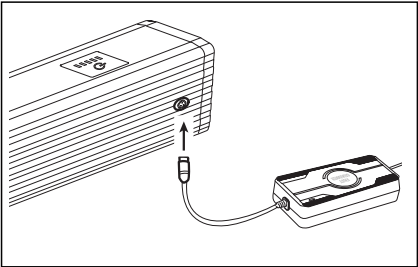
Stop charging

- Disconnect the charger from the AC outlet.
- Disconnect the charger from the Energy 700 battery.

With the Energy 700 removed from the bike

Start charging

- Remove the Energy 700 battery from the bike.
- Connect the charger to the charge port of the Energy 700 battery.
- Connect the charger to an AC outlet.
- The charging process starts.



Stop charging

- Disconnect the charger from the AC outlet.
- Disconnect the charger from the Energy 700 battery.
- Place the Energy 700 battery back into the bike.



CAUTION

Disconnect the charger from the Energy 700 battery and AC outlet when the battery is fully charged.



INFO

- The LED on the charger shows the process status.
- The LED indicator on the Energy 700 battery shows current battery level.
- Charging can be stopped / interrupted at any time.

3.2.3 Charging time

Capacity		687.9 Wh
Charger		3A
Charge	0~60%	3:20 h
	0~80%	4:40 h
	0~100%	6:10 h

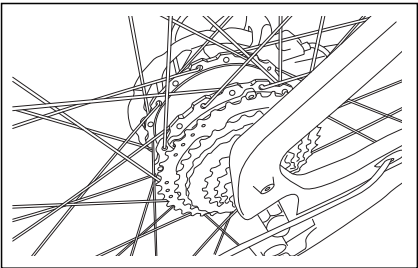


INFO

This charging time table shows an indication of the average charge times for a new, healthy battery under optimal charging conditions. Actual charge times may vary depending on temperature, battery health and age etc.

3.3 SyncDrive Move S

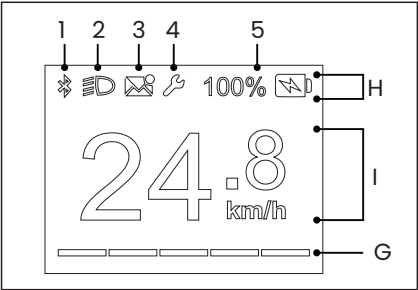
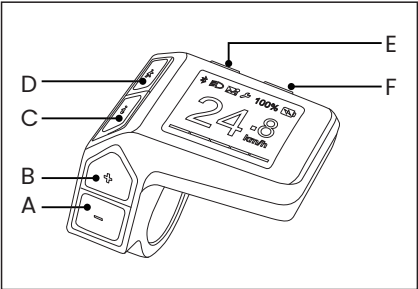
The SyncDrive Move S integrates multiple smart sensors for understanding the rider's behavior and the surrounding variations to provide a proper support pattern that best fits the rider's need. This drive unit is specifically tuned for the VIDA E+ to be a smooth, natural, and reliable partner for a wide variety of use scenarios.



3.4 RideControl Dash Core

The RideControl Dash Core is a remote with integrated color display screen, that shows e-bike system and ride information. It allows the user to select and control the functions of the e-bike.

- A. Assistance level down
 - B. Assistance level up
 - C. Info
 - D. Walk assist
 - E. Power On / Off
 - F. Light / Screen backlight
 - G. Power assist level indicator
 - H. Status bar
 - I. Data field
1. Wireless connection
 2. Light status
 3. Phone notification
 4. Service
 5. Battery status



Powering on and off

- Press the 'Power on/off' button (E) to switch on the system.
- Press the 'Power on/off' button (E) for 2 seconds to switch off the system.

Power assist

Manually select the assist level

- Press the 'Assistance level up' (B) or 'Assistance level down' button (A) to change the assist level.
- Power assist level indicator (G) indicate the selected level.

The screen shows the new assist level name and estimated remaining riding range for 2 seconds. Then the riding screen will return with an updated level indicator.

Screen

Status bar

Status bar (H) always shows the battery status (5). Other icons (1-4) will appear when that function is active.

1. Wireless connection: Indicates an active wireless connection between the bike and a smartphone with the RideControl app.
2. Light status: The light icon indicates that the bike lights are switched on.
3. Notification: Indicates that there are new or unread messages on a smartphone. Only via the RideControl app.
4. Service indicator: The service indicator (wrench icon) appears when periodic technical maintenance is due or when a system event (malfunction) has occurred.
5. Battery status indicator: The battery status indicator shows the current battery level from 100% to 0%.
 - When battery power is less than 3%, the battery icon starts blinking. The system will switch to lowest assist level.
 - When battery power is less than 1%, the battery icon is blinking. Power Assist will shut down. The light system will be still functional for at least 2 hours.



INFO

- Some RideControl app functions and features mentioned in this manual may not be available at this time. Compatibility and available features may also vary depending on app version, e-bike model, component hardware/firmware version, smartphone specifications, operating system, etc.
- Fog Deposition on RideControl Dash Core:
Fogging on the RideControl display is a natural phenomenon caused by rapid temperature changes, leading to condensation from air trapped between the display panel and the waterproof-coated PCB. This is common in many similar products and does not indicate a defect or waterproofing problem. Replacing the display will not prevent fogging. The fogging is temporary and will clear as temperatures stabilize without affecting the display's performance. For concerns or support, please get in touch with authorized dealer.

Data field (I)

Data field (I) is a single data field to display specific information.

Data field options:

- SPEED: Current riding speed (default).
- RANGE: Estimated remaining riding range on current assist level.
- ODO: Total riding distance since first use.
- DISTANCE: Riding distance since last reset.
- TRIP TIME: Riding time since last reset.
- AVG SPEED: Average speed since last reset.
- MAX SPEED: Maximum speed since last reset.
- CADENCE: Current pedaling speed in rpm (rotations per minute).



INFO

- Various circumstances during the ride, like terrain profile or wind strength and direction, may affect the actual range.
- Press the 'Info' button (C) to change to a different data field. The screen will display the description of the new field for 2 seconds and switch to the new field.

Power assist level indicator

The Power assist level indicator (G) visually represents the currently selected assist level as a row of 5 bars, that can vary in color.

Assist level options:

- Off
- ECO
- Active
- Power

Walk assist

The Walk assist function is to help you while walking with the bike. Walk assist works up to a speed of 1km/h (0.6mph) and is at its most powerful in the lowest (easiest) gear.

- Press the 'Walk assist' button (D) to set walk assist standby.
- Press the 'Assistance level up' button (B) within 3 seconds to engage Walk assist.
- Release the 'Assistance level up' button (D) to stop or pause Walk assist. Press again within 3 seconds to re-engage.
- Press any other button to return to normal riding mode immediately.



INFO

If no other action is performed within 3 seconds after pressing 'Walk assist' button (D), the system will return to normal riding mode.

Lighting / Screen brightness

- Press and hold the 'Light/Info' button (F) for 2 seconds to switch the bike lights on or off.
- Light indicator (2) lights up when the light is switched on.

Settings

Changing display units (metric/imperial)

- Press and hold the 'Info' button (C) for 5 seconds.

Resetting sub data fields

- To clear DIST, TRIP, AVG SPD
 - Press and hold the 'Assistance level up' (B) and 'Assistance level down' (A) buttons simultaneously for 3 seconds.
- To clear MAX SPD
 - Scroll to MAX SPD data field.
 - Press and hold the 'Assistance level up' (B) and 'Assistance level down' (A) buttons simultaneously for 3 seconds.

System events

A system event warning screen shows when a malfunction occurs.

- A warning screen is displayed for 2 seconds.
- An event description is displayed for 5 seconds.
- The riding screen returns after the warning screen, showing the service indicator in the status bar.

Quick troubleshooting steps

1. Make a note of the event description.
2. Switch off the system.
3. Visually check for any obvious cause.
4. Solve any easy and obvious cause, if safely possible (e.g. reinstall incorrectly placed battery).

Switch the system back on. If the issue is solved:

- Normal use may be continued.
- Schedule a service check at an authorized dealer.

If the issue returns:

- Repeat step 1-4.

If the issue persists:

- Quit riding.
- Contact authorized dealer for diagnose and repairs.

3.5 E-Lock

For ensuring the bike safety and a worry-free e-cycling experience, the VIDA E+ has an E-Lock feature that protects your bike from the theft by shutting off the motor. You can simply lock/unlock the e-bike through the wireless communication via the RideControl app.

E-Lock setup

1. Before setting up the E-Lock, please make sure to finish the process of e-bike activation and owner registration. Only registered user with a valid Giant ID can activate the E-Lock function
2. Turn on your e-bike.
3. Connect your e-bike with RideControl app.
4. Find the E-Lock setting button at the e-bike setup main page.
5. Follow the on-screen instructions to complete the E-Lock activation process.
6. Once activated, you can lock/unlock the e-bike by tapping the virtual button on the RideControl app

Use the E-Lock

1. Turn the e-bike on. The locking status will remain the same as the system being turned-off.
2. Connect the RideControl app to the e-bike.
3. Find the E-Lock setting page through the icon showed at the e-bike setup main page.
4. Press the virtual button to lock/unlock the e-bike.



INFO

The E-Lock is a bound-account-only feature for ensuring the bike security. Any user aside from the bike owner can still connect to the e-bike but only the general functions will be available.

3.6 Keys

The VIDA E+ comes standard with two identical keys that fit the battery lock. Keep one of the keys with the key number tag stored as a spare. Write down the key number and keep that stored together with the bike's frame number and other documents.



NOTICE

- Always bring the key when visiting the dealer for maintenance or repairs.
- Without the key, a locked battery cannot be removed without damage.
- Make sure you always have at least one spare key.
- It is recommended to get an extra spare copy of the key.
- A qualified locksmith can make a duplicate of the original keys.
- Store your key number and spare key(s) in a safe yet accessible place.

3.7 Riding range

Riding range can be difficult to predict accurately. A higher capacity battery will provide a higher range when all other factors are the same. But in practice there are many factors that influence energy consumption, and they can vary greatly. An understanding of how particular factors will affect energy consumption, together with experience, will help to optimize the riding range and start your trip with confidence.

3.7.1 Factors that affect range

The range on one charge strongly depends on several circumstances, such as (but not limited to):

- The total vehicle weight including the rider, passengers and cargo loaded onto the bike.
- Weather conditions, such as ambient temperature and wind.
- Road conditions, such as elevation and road surface.
- Bike conditions, such as tire pressure and maintenance level.
- Amount of charge and discharge cycles.
- Age and condition of the battery.
- Bike usage, such as acceleration and shifting.
- Assist level(s) used.



INFO

A new battery might not yet report the power level very accurately. This will improve after a few full cycles of discharging (by riding) and recharging.

3.7.2 Best practices for riding range

For optimal riding range and to minimize wear of the moving parts on your e-bike, try to make a habit out of the following best practices:

- **Select an appropriate gear for the riding speed and pedaling speed (cadence).**
Shift gears often. Choose a relatively low gear and high, but comfortable pedaling cadence. This provides an optimal ratio between power output and energy consumption in almost all riding scenarios.
Don't stay in one (high) gear. Setting off and riding at lower speeds in a high (heavy) gear will result in higher energy consumption.
Release pressure on the pedals while shifting gears.
- **Select the right assist level.**
Choose the lightest assist level that you need.
- **Ride in harmony with traffic and the environment.**
Try to ride at a steady speed and keep the momentum going. Fewer decelerations require fewer accelerations, which minimizes power consumption.
- **Keep the load weight minimal.**
Remove any items and/or removable accessories that you don't need.
- **Keep the e-bike clean and in optimal technical condition.**
Check and maintain tire pressure regularly.
Check and maintain the drivetrain (chain, chainwheel, sprockets, etc.) regularly.
Always bring your e-bike to your dealer for the scheduled periodic maintenance.

4 Transport & Storage

Transport



CAUTION

- Any removable (electronic) parts, such as the charger and battery, should always be removed from the e-bike before transport.
- Always follow the instructions provided by the manufacturer(s) of the vehicle and/or bicycle carrier being used for transporting the e-bike.



NOTICE

- Avoid transporting the e-bike in bad weather conditions when possible.
- Properly cover any exposed electronic parts during transport when transport in bad weather conditions can not be avoided.
- High speeds combined with wind and rain could cause moisture to be pressured into the electronic parts, which can lead to temporary malfunctions or permanent defects.
- If a malfunction occurs after transport in such conditions, remove the battery and allow all parts to dry by air when the destination is reached.

E-bike storage

Store the e-bike in a location where it is protected from the elements whenever possible.



NOTICE

- Snow, rain, road salts and acids can cause certain parts of the e-bike to corrode or deteriorate.
- Ultraviolet light from the sun can fade the paint and can cause rubber or plastic parts to become porous or to crack.
- Exposure to excessively high or low temperatures during storage can cause temporary malfunctions or even permanent defects.

Battery storage

Disconnect and remove the battery from the bike for long term storage.



CAUTION

- Store the Energy 700 battery in a dry, safe location.
- Store the Energy 700 battery at an environmental temperature between -10°C and 35°C (14°F~95°F).



NOTICE

- Store the Energy 700 battery at an appropriate temperature, or it can decrease battery health and overall service life.
- Store the Energy 700 battery with fully charge.
- Check the Energy 700 battery charge level monthly during longer storage periods.
- Recharge the Energy 700 battery when charge level has dropped below 20%.
- Charge the Energy 700 battery at least once in every 12 months.
- Improper storage and/or long-term neglect of the battery can cause decreased capacity and defects, and may void the factory warranty.

5 Maintenance

Regular maintenance and cleaning are essential for optimal performance and safety.



INFO

Make sure to also read the information on maintenance on the website and in general bike owner's manual.

Cleaning

Use a soft cloth or brush, optionally with a minimal amount of a neutral cleaning solution, to wipe dirt off. Wipe dry with a clean soft cloth afterwards.



CAUTION

- Do not use high-pressure water or air hoses for cleaning. It can force water into (sealed) electric components, which may cause malfunctions and defects.
- Do not wash the E-bike components with excessive water. If water reaches internal electrical parts, it may cause malfunctions and other problems.



NOTICE

Do not use non-neutral cleaning solutions to wash the components. Nonneutral solutions may cause materials to deteriorate, change colour, distort, scratch etc.

Drivetrain



WARNING

Always remove the battery when checking the chain tension. Placing your hands (or other body parts) anywhere on the drivetrain while the system is still powered, could result in sudden activation of the motor.



CAUTION

- Any adjustments or replacements should only be performed with proper tools by a trained mechanic.
- Ask your dealer for more information and support on your E-bike's technical maintenance.

6 Disposal



NOTICE

- Used batteries must be treated as hazardous waste.
- Batteries must be disposed of in accordance with the relevant national environmental protection regulations.
- Return batteries to a recycling facility, or an authorized Giant dealer.
- In case of uncertainty contact Giant customer service department.

7 Legal documentation

7.1 Warranty

Giant/Liv/Momentum warrants for the original owner only the frame, rigid fork, or original component parts of each new Giant/Liv/Momentum brand bicycle to be free from defects in material and workmanship for the following specified periods.

Warranty of two years for electronic equipment such as:

- RideControl display & Buttons
- SyncDrive motor
- Energy 700 battery: a maximum of 600 charges to 60% of original nominal capacity.
- Wiring

Please refer to the label of regulation on the frame for the maximum total permissible bike of your e-bike since the permissible overall loading is subject to change with the bike specification and riding scenarios. For all other parts and components, refer to the general user manual that is delivered with this e-bike as well. That user manual is leading in case of any issues. The information below and in Exclusions on page 24 is only for reference.

Required Assembly When Purchased

This warranty applies only to bicycles and frame sets purchased new from an Authorized Giant/Liv/Momentum Dealer and assembled by that dealer at the time of purchase

Limited Remedy

Unless otherwise provided, the sole remedy under the above warranty, or any implied warranty, is limited to the replacement of defective parts with those of equal or greater value at the sole discretion of Giant/Liv/Momentum. This warranty extends from the date of purchase, applies only to the original owner, and is not transferable. In no event shall Giant/Liv/Momentum be responsible for any direct, incidental or consequential damages, including, without limitation, damages for personal injury, property damage, or economic losses, whether based on contract, warranty, negligence, product liability, or any other theory..

Giant/Liv/Momentum makes no other warranties, express or implied. All implied warranties, including the warranties of merchantability and fitness for a particular purpose are limited in duration to that of the express warranties stated above. Any claim against this warranty must be made through an Authorized Giant/Liv/Momentum or distributor. The purchase receipt or other proof of the date of purchase is required before a warranty claim may be processed. Claims made outside the country of purchase may be subject to fees and additional restrictions. Warranty duration and detail may differ by frame type and/or by country. This warranty gives you specific legal rights, and you may also have other rights which may vary from place to place. This warranty does not affect your statutory rights.

7.2 Exclusions

Normal wear and tear on parts such as tires, chains, brakes, cables and gearwheels in situations where there are no assembly or material defects.

- Bicycles serviced by other than an Giant/Liv/Momentum dealer.
- Modifications from the original condition.
- Use of the bicycle for abnormal, competition and/or commercial activities or for purposes other than those for which the bicycle was designed.
- Damage caused by failing to follow the user manual.
- Paint finish and decal damage resulting from taking part in competitions, jumping, downhill and/ or training for such activities or events or as a result of exposing the bike to, or riding the bike in, severe conditions or climates.
- Labor charges for part replacement or changeover.

Except as is provided by this warranty and subject to all additional warranties Giant/Liv/Momentum and its employees and agents shall not be liable for any loss or damage whatsoever (including incidental and consequential loss or damage caused by negligence or default) arising from or concerning any Giant/Liv/Momentum bicycle.

7.3 Disclaimer

Do not tamper with your bicycle. Tampering is removing or replacing any original equipment or modifying your bicycle in any way that may change its design and/or operation. Such changes may seriously impair the handling, stability and other aspects of the bicycle, making it unsafe to ride. Tampering can void the warranty and render your bike not in compliance with the applicable laws and regulations. To ensure safety, quality and reliability, use only original parts or Momentum authorized replacements for repair and replacement. Momentum is not responsible for any direct, incidental or consequential damages, including, without limitation, damages for personal injury, property damage, or economic losses due to tampering.

7.4 FCC

This device complies with part 15 of the FCC Rules. Operation is subject to the following two conditions:

- This device may not cause harmful interference.
- This device must accept any interference received, including interference that may cause undesired operation.

Please note that changes or modifications not expressly approved by the party responsible for compliance could void the user's authority to operate the equipment.



INFO

This equipment has been tested and found to comply with the limits for a Class B digital device, pursuant to part 15 of the FCC Rules. These limits are designed to provide reasonable protection against harmful interference in a residential installation. This equipment generates, uses and can radiate radio frequency energy and, if not installed and used in accordance with the instructions, may cause harmful interference to radio communications. However, there is no guarantee that interference will not occur in a particular installation. If this equipment does cause harmful interference to radio or television reception, which can be determined by turning the equipment off and on, the user is encouraged to try to correct the interference by one or more of the following measures:

- Reorient or relocate the receiving antenna.
- Increase the separation between the equipment and receiver.
- Connect the equipment into an outlet on a circuit different from that to which the receiver is connected.
- Consult the dealer or an experienced radio/TV technician for help.

This equipment complies with radio frequency exposure limits set forth by the FCC for an uncontrolled environment.

This equipment should be installed and operated with a minimum distance of 5mm between the device and the user or bystanders.

This device must not be co-located or operating in conjunction with any other antenna or transmitter.

Version 1.0

All rights reserved by momentum.
www.momentum-biking.com



1740-MMTEN0-002