

CADEX

TABLE OF CONTENTS

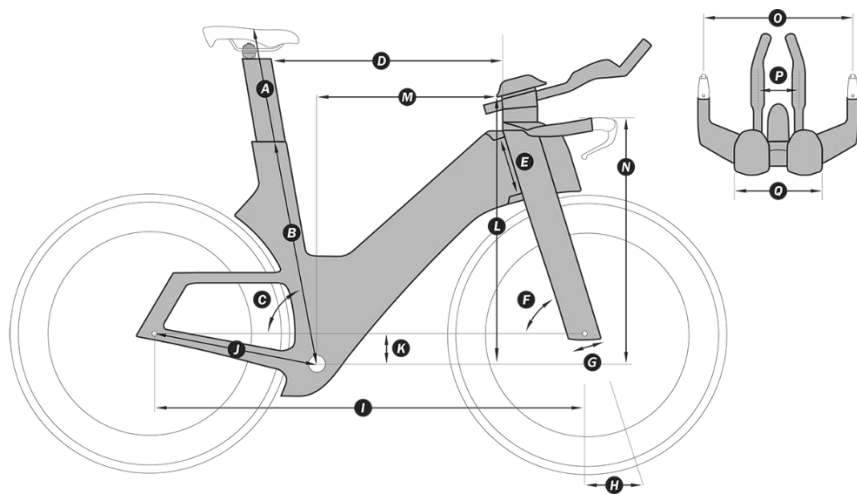
- 1 Frame Sizing
- 2 Stack And Reach Range
- 3 Tri Bar Removal Assembly
- 4 Top Tube Storage & Toolkit Removal & Installation
- 5 Hydration System
- 6 Seat Post & Saddle Adjustment

1. FRAME SIZING

SIZING GUIDE AND GEOMETRY

Sizing to be used as a reference only. Please check with a local authorized dealer to determine the correct size.

Available sizes may vary from country to country.

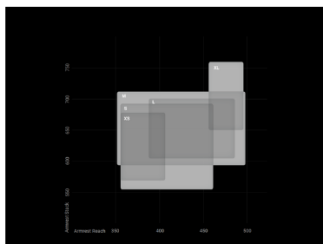


		XXS	XS	S	M	L
	HEIGHT (cm)	150 - 162	156 - 168	164 - 176	172 - 186	180 - 195
	INSEAM (cm)	62 - 76	65 - 80	70 - 85	75 - 90	80 - 98
A	SADDLE HEIGHT RANGE (mm)	540-710	580-750	620-790	660-830	700-870
B	SEAT TUBE LENGTH (mm)	440	475	510	545	580
C	SEAT TUBE ANGLE	76 - 80°	76 - 80°	76 - 80°	76 - 80°	76 - 80°

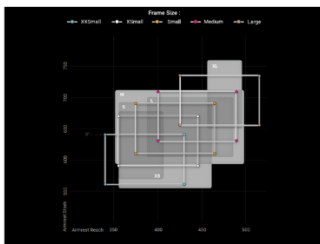
D	TOP TUBE LENGTH (mm)	475	495	520	550	580
E	HEAD TUBE LENGTH (mm)	70	95	120	145	170
F	HEAD TUBE ANGLE	71.0°	73.0°	73.0°	73.0°	73.0°
G	FORK RAKE (mm)	40	40	40	40	40
H	TRAIL (mm)	76.1	63.3	63.3	63.3	63.3
I	WHEELBASE (mm)	968	976	1005	1039	1072
J	CHAIN STAY LENGTH (mm)	405	405	405	405	405
K	BOTTOM BRACKET DROP (mm)	80	80	77	74	74
L	ARMREST STACK (15D) (mm)	545 - 615	575 - 645	595 - 665	615 - 685	640 - 710
M	ARMREST REACH (15D) (mm)	340 - 430	355 - 445	375 - 465	400 - 490	425 - 515
	FRAME STACK (mm)	483	513	534	555	579
	FRAME REACH (mm)	390	405	426	452	478
N	HEIGHT (mm)	530 - 570	560 - 600	580 - 620	600 - 640	625 - 665
O	HANDLEBAR WIDTH (mm)	400	400	400	400	400
P	EXTENSION WIDTH (mm)	110 190	110 190	110 190	110 190	110 190
Q	ARMREST WIDTH (mm)	190 - 310	190 - 310	190 - 310	190 - 310	190 - 310
	COMPATIBLE SIZE (mm)	700 x 28C	700 x 28C	700 x 28C	700 x 28C	700 x 28C

2. STACK AND REACH RANGE

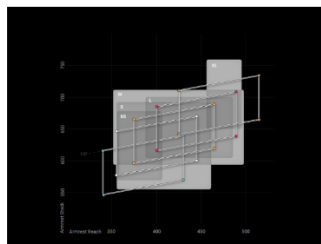
FIT DATA CHART



STANDARD TRI FRAME FIT RANGE



0 DEGREE POSITION CADEX TRI FIT RANGE



15 DEGREE POSITION CADEX TRI FIT RANGE

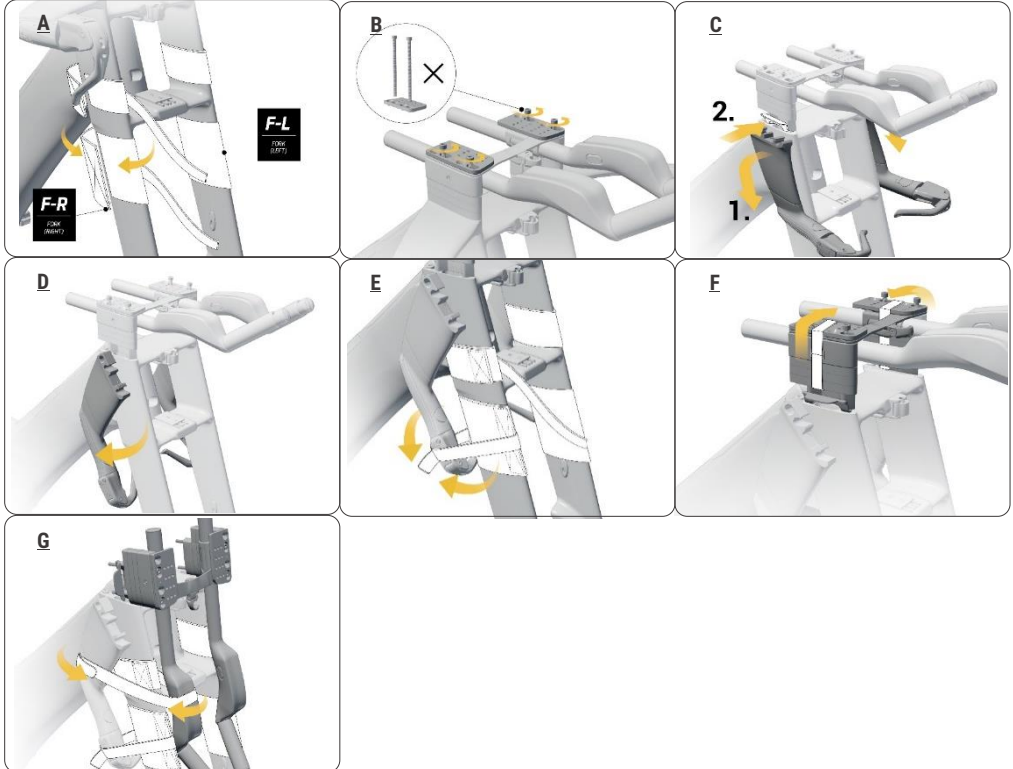
GEOMETRY

0°		XXS	XS	S	M	L
L	ARMREST STACK-MIN (mm)	560	590	610	630	655
L	ARMREST STACK-MAX (mm)	640	670	690	710	735
M	ARMREST REACH-MIN (mm)	340	355	375	400	425
M	ARMREST REACH-MAX (mm)	430	445	465	490	515
5°						
		XXS	XS	S	M	L
L	ARMREST STACK-MIN (mm)	555	585	605	625	650
L	ARMREST STACK-MAX (mm)	625	655	675	695	720
M	ARMREST REACH-MIN (mm)	340	355	375	400	425

M	ARMREST REACH-MAX (mm)	430	445	465	490	515
10°						
		XXS	XS	S	M	L
L	ARMREST STACK-MIN (mm)	550	580	600	620	645
L	ARMREST STACK-MAX (mm)	630	660	680	700	725
M	ARMREST REACH-MIN (mm)	340	355	375	400	425
M	ARMREST REACH-MAX (mm)	430	445	465	490	515
15°						
L	ARMREST STACK-MIN (mm)	545	575	595	615	640
L	ARMREST STACK-MAX (mm)	615	645	665	685	710
M	ARMREST REACH-MIN (mm)	340	355	375	400	425
M	ARMREST REACH-MAX (mm)	430	445	465	490	515

3. TRI BAR REMOVAL & ASSEMBLY

REMOVAL

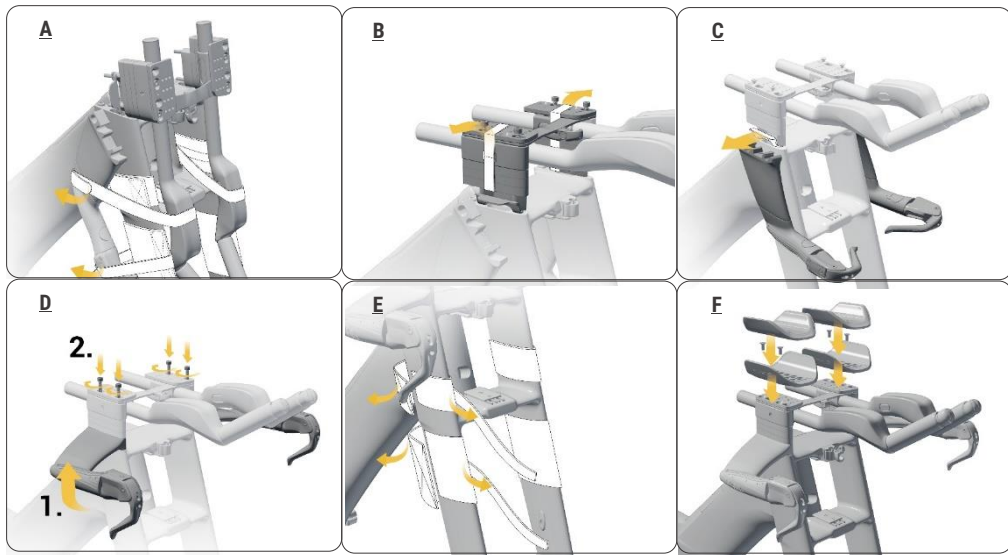


1. Install fork pads **F-R** and **F-L** onto the upper part of fork (A).
2. Loosen but don't remove the four cockpit fixing bolts with a 4mm hex key (B).
3. Lift up the extension assembly and detach base bars from both sides. Install protective spacer to the four fixing bolts. (C).
4. Gently flip down both base bars without putting too much tension on the brake hoses. Gently lay each bar against the fork leg on the same side. (D).
5. Secure both base bars to the fork legs with the shorter Velcro straps. (E).
6. Secure spacers with Velcro straps. Completely loosen the four cockpit fixing bolts. (F).
7. Flip the assembly down and position it gently against the front of the fork. Secure the entire assembly with the longer Velcro straps. (G).

ASSEMBLY**NOTE:**

Always use a torque wrench.

After assembly, with both wheels on the floor, hold both brakes and gently rock the bike forward and backward to make sure nothing is loose.



1. Remove securing Velcro strap from assembly (A).

2. Replace extension bar assembly and loosely refit the four fixing bolts. Remove Velcro straps (B).

3. Remove protective spacers. (C).

4. Replace base bars. Tighten all cockpit fixing bolts to 5.5Nm with a 4mm hex (D)

5. Remove protective pads (E).

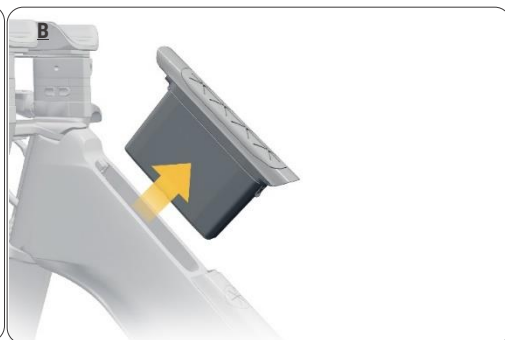
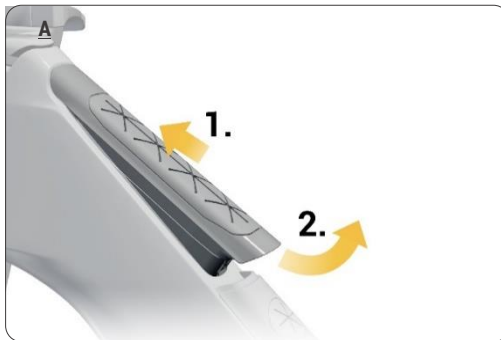
6. Replace arm cups. Tighten bolts to 4Nm with a 3mm hex (F).

4. TOP TUBE STORAGE & TOOLKIT REMOVAL & INSTALLATION

NOTE:

Make sure all storage parts fit snugly to the frame and do not rattle.

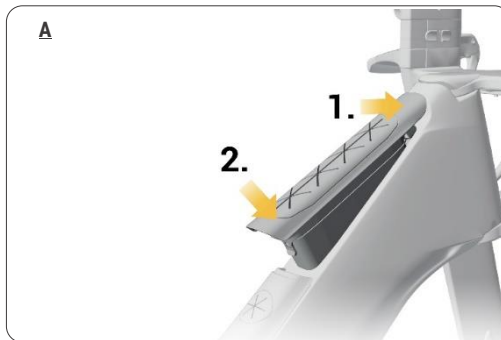
TOP TUBE STORAGE REMOVAL



1. Hold the lower end firmly and push upwards (A).

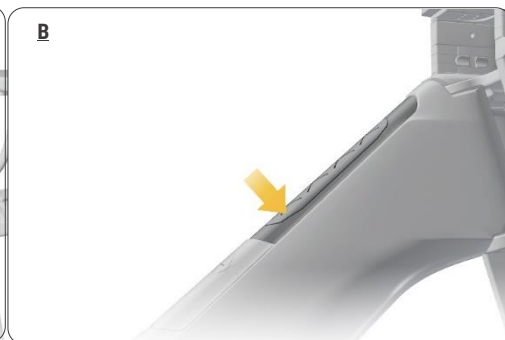
2. Pivot the storage box upwards to remove. (B).

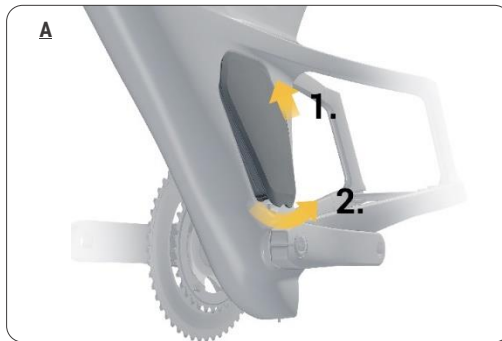
TOP TUBE STORAGE INSTALLATION



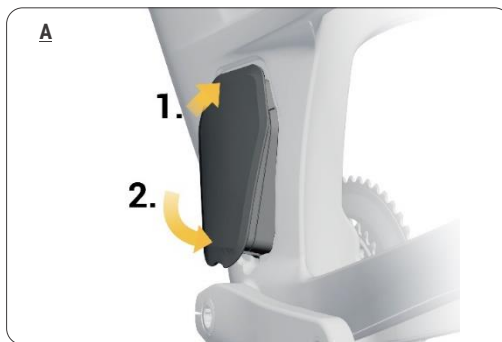
1. Insert and firmly push front latch into the frame recess (A).

2. Push storage box downward into the frame (B).



TOOLKIT REMOVAL

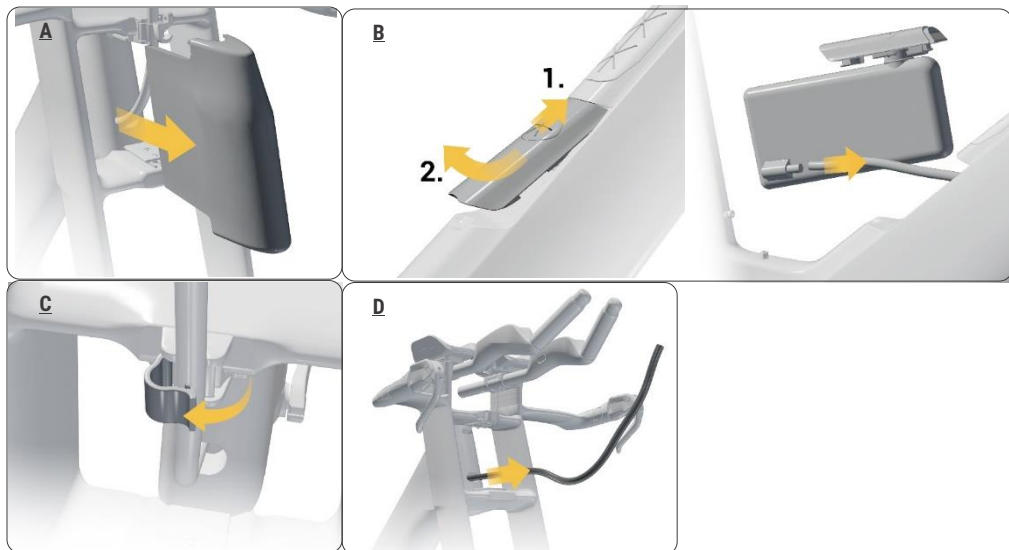
1. Hold the lower end firmly and push upwards (A).
2. Pivot the toolkit sideways to remove (B).

TOOLKIT INSTALLATION

1. Insert and firmly push upper latch into the frame recess (A).
2. Push tool box into the frame until it fits snugly. (B).

5. HYDRATION SYSTEM REMOVAL & INSTALLATION

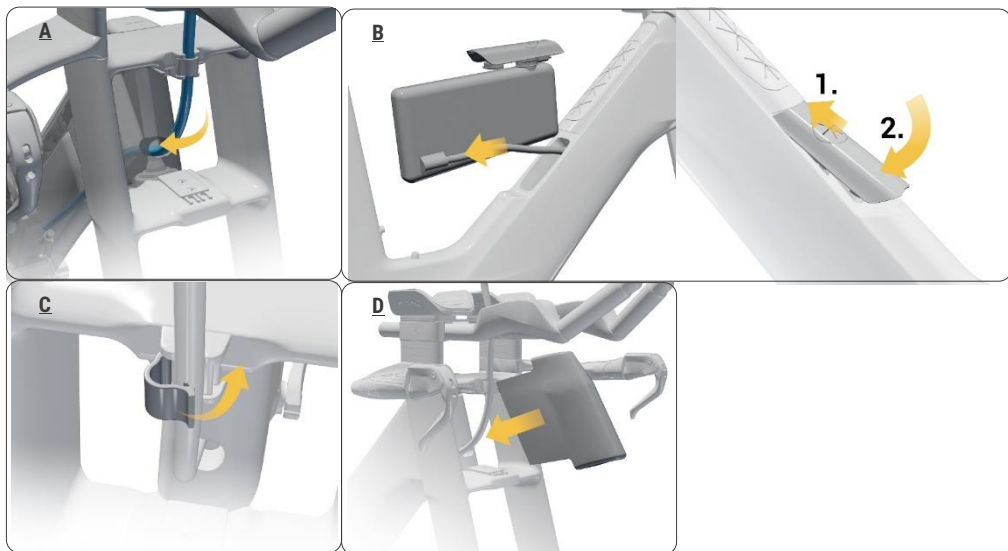
REMOVAL



1. Remove front aero cover by pulling outward with both hands (A)
2. Take out the bladder and disconnect the straw. Replace the bladder (B).
3. Use your index finger to unclip the straw while pressing the clip with your thumb (C)
4. Remove the straw by gently pulling through from the front side of the bike (D).

INSTALLATION**NOTE:**

Once the straw has been refitted, turn the handlebar from side to side to make sure is not compromised. If you feel any interference, remove the straw and refit again.

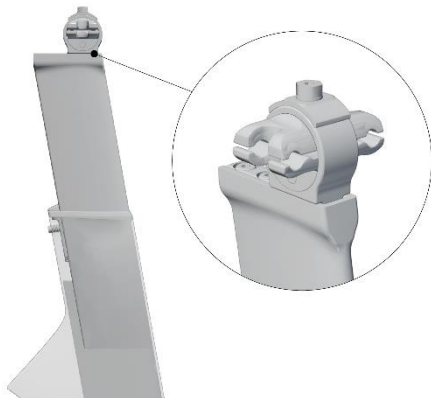


1. Feed the straw from the head tube trough the right-side of steerer (A).
2. Take out the bladder and reconnect the straw. Replace the bladder (B).
3. Adjust the straw to desired length and secure the straw onto the clip (C).
4. Refit the front aero cover (D).

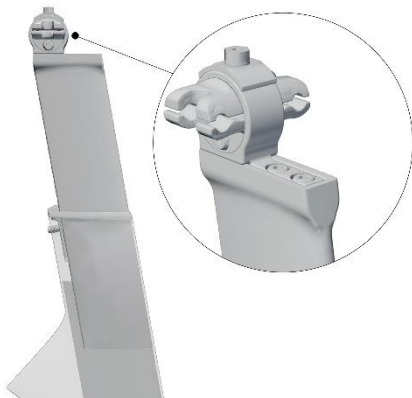
6. SEAT POST & SADDLE ADJUSTMENT

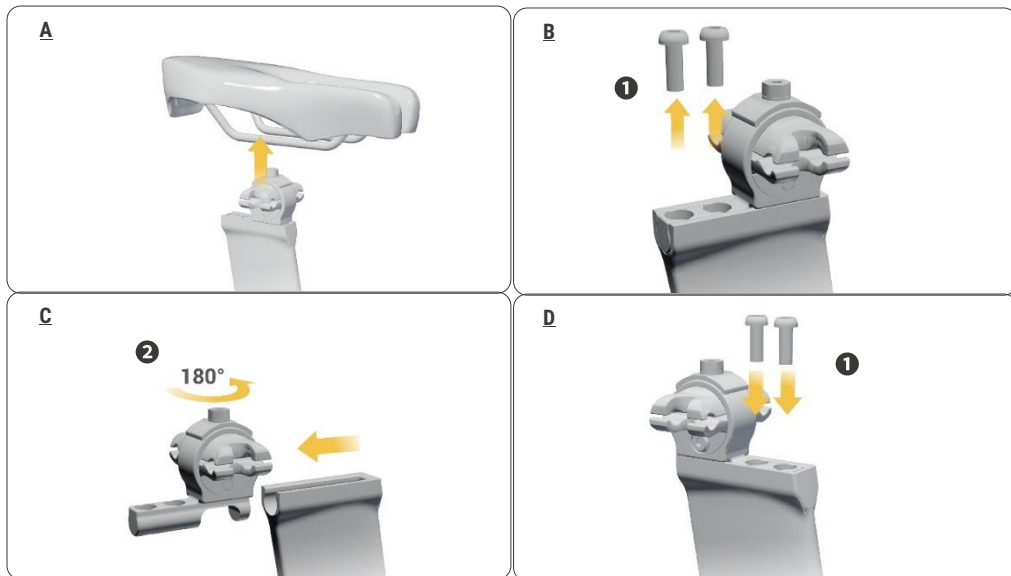
CLAMP POSITION

Front position 78° to 80° seat tube angle



Rear position 76° to 78° seat tube angle

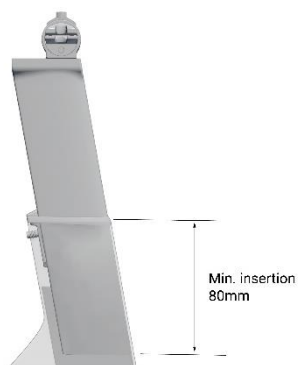


SADDLE CLAMP ADJUSTMENT

1. Remove saddle (A).
2. Loosen and remove both clamp fixing bolts ① (B).
3. Pull out clamp ②, turn it 180° horizontally and refit it into seat post (C).
4. Replace clamp fixing bolts ①, tighten to 5Nm (D).

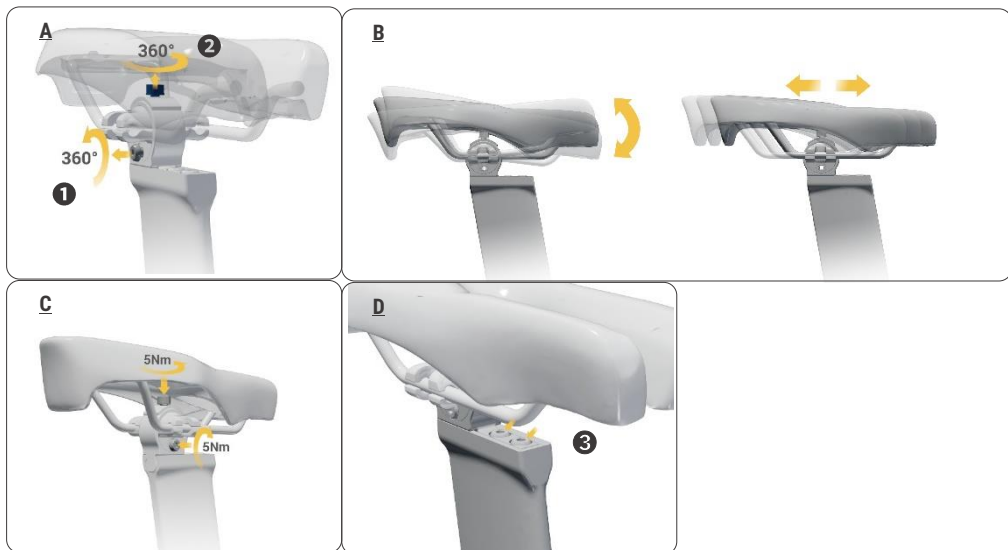
SEAT POST

Minimum insertion - 80mm.



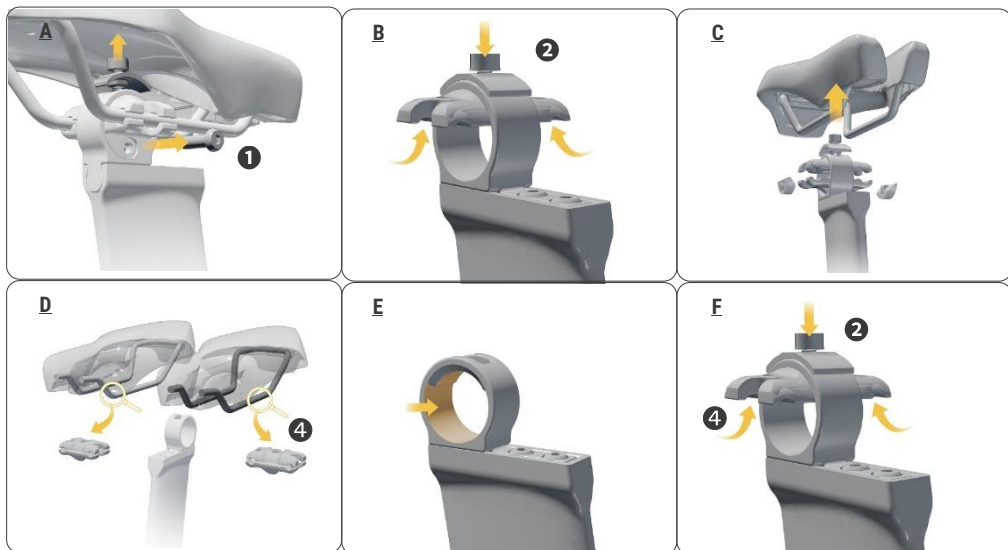
NOTE:

1. Always use a torque wrench
2. Once the installation or adjustment has been completed, grab the saddle and rock it back and forth to ensure all fasteners are snug.

**SADDLE POSITION ADJUSTMENT**

1. Loosen the side bolt ① a full turn; Loosen the top bolt ② a full turn (A)
2. Adjust saddle angle, fore or aft to preferred position (B).
3. Tighten the top bolt to 5 Nm with 4 mm hex; Tighten the side bolt to 5 Nm with 4 mm hex (C)
4. Double check clamp fixing bolts ③ (D)

SADDLE REMOVAL & INSTALLATION



1. Loosen and remove the side bolt **1** (A).

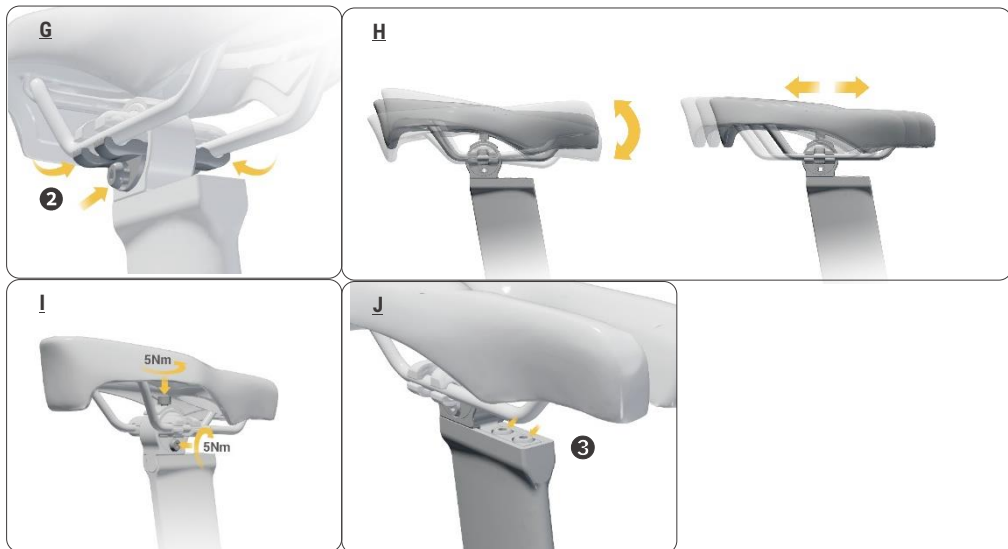
2. Loosen and remove the top bolt **2** and the upper piece (B).

3. Remove the saddle from the clamp. Rock the saddle back and forth to help removal. (C).

4. Select 7mm top clamp for alloy rail saddle or 9mm top clamp for carbon rail saddle. **4** (D)

5. Apply carbon paste to the clamp housing (E).

6. Replace top clamp **4** and loosely tighten the top bolt **2** and upper piece (F).



7. Refit saddle with the lower piece and lightly tighten the side bolt **2** (G)

8. Adjust saddle angle, fore and aft to preferred position (H).

9. Tighten the top bolt and the side bolt to 5 Nm (I)

10. Double check clamp fixing bolts **3** (J)