

! WARNING/CAUTION

- This light emits an extremely powerful beam equivalent to automobile headlight so it may cause a hazardous situation depending on the beam angle used.
- Be sure to direct the light beam downward so the driver approaching does not get dazzled.
- Do not use high mode on public roads.
- Before your trip, please make sure the light is firmly mounted to the bracket, it lights up, and the light is not blocked by baggage, etc.
- Do not stare at the light when it is illuminating. Otherwise it may damage your eyesight.
- Do not place it within children's reach.
- In preparation for unexpected battery shutdown, we recommend you carry a spare light.
- This product is water-resistant under normal daily use and can be used in the rain. However, do not intentionally submerge it in water.
- If the light unit or parts become dirty with mud, etc., clean with a soft cloth which is moistened with mild soap. Never apply paint thinner, benzene or alcohol; damage will result.
- This unit is shipped with a small charge to check the light. Be sure to charge it before use, according to the instructions "HOW TO CHARGE".



Handlebar mount(31.8-35mm)



3mm Hex



Micro USB Cable



25.4mm



Aero shape compatible



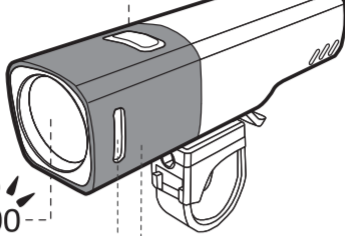
Adjustable GoPro mount

Power button
1 sec. turn on/off

800 Lumens

Side light

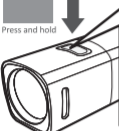
Aluminum case



SWITCHING THE LIGHTING MODE

When you turn the light on, it light up in the last lighting mode you used.(Mode memory function)

Press and hold



LUMENS/RUNTIME

ANSI	HIGH	MID	LOW	SMART (DAY)	SMART (NIGHT)	FLASH
	800 LUMENS	400 LUMENS	200 LUMENS	200/100 LUMENS	400 LUMENS	100 LUMENS
	01:30 h:min	03:30 h:min	07:00 h:min	38:00 h:min	03:30 h:min	33:00 h:min

SMART MODE



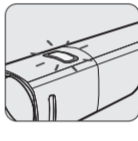
BATTERY INDICATOR

Green : 100~70%

Orange : 70~40%

Red : 40~20%

Red flash : 20~0%



HOW TO CHARGING

Always charge the product before use.



Charging

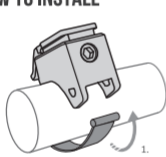


Fully Charging

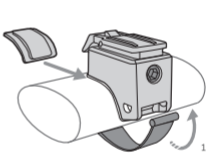


Approx. 3.5hrs(1A)

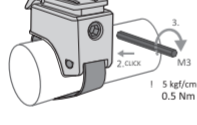
HOW TO INSTALL



1.



1.



2. CLICK

M3

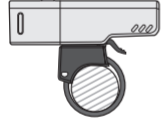
1 5 kgf/cm
0.5 Nm



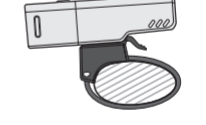
2. CLICK

M3

1 5 kgf/cm
0.5 Nm



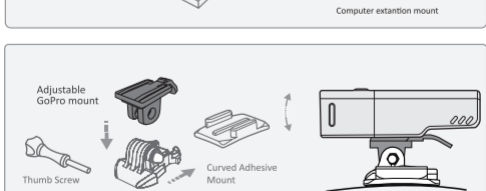
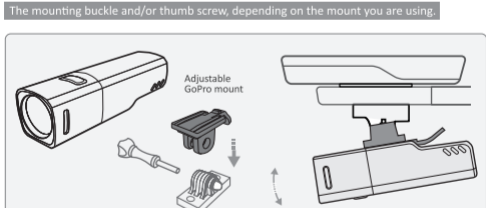
31.8-35mm



Aero shape compatible

HOW TO MOUNT TO A HELMET/COMPUTER EXTENSION MOUNT

The mounting buckle and/or thumb screw, depending on the mount you are using.



SPARE/OPTIONAL PARTS



Under mount
SKU:40000153



Handlebar mount
SKU:40000154



Rubber strap mount
SKU:40000155



Adjustable GoPro mount
SKU:40000157

STATEMENTS OF REGULATORY COMPLIANCE

FCC Compliance RECON HL-800
FCC ID: ZAP8N-RECONHL800
This device conforms to FCC Rules and Regulations under Part 15 Subpart B requirement. This product herewith complies with the requirements of FCC Rules and Regulations as list below:
FCC Part 15 Subpart B Class B, Measurement Procedure:ANSI C63.4-2016

European Union Compliance
RECON HL-800 do not comply with German StVZO regulations! RECON HL800 ,are in compliance with the following European Directives:
•EMC Directive 2014/30/EU
•Low Voltage Directive 2014/35/EU

Industry Canada Compliance
RECON HL- 800
IC ID:23735-RECON HL800 CAN ICES-3(B)/NMB-3(B)
This device complies with Industry Canada cense-exempt R55 standards). This Class B digital apparatus complies Canadian ICES-003.
Cet appareil numérique de la classe B est conforme à la norme NMB-003 du Canada.

Korean Compliance
RECON HL800 P/N 400000185 인증자 상호 GIANT MFG. CO., LTD.
기기의 명칭: RECON HL-800 모델명: 400000185
제조자/제조국가 GIANT MFG. CO., LTD. / 대만 인증자 식별번호: R-R-001-HL800