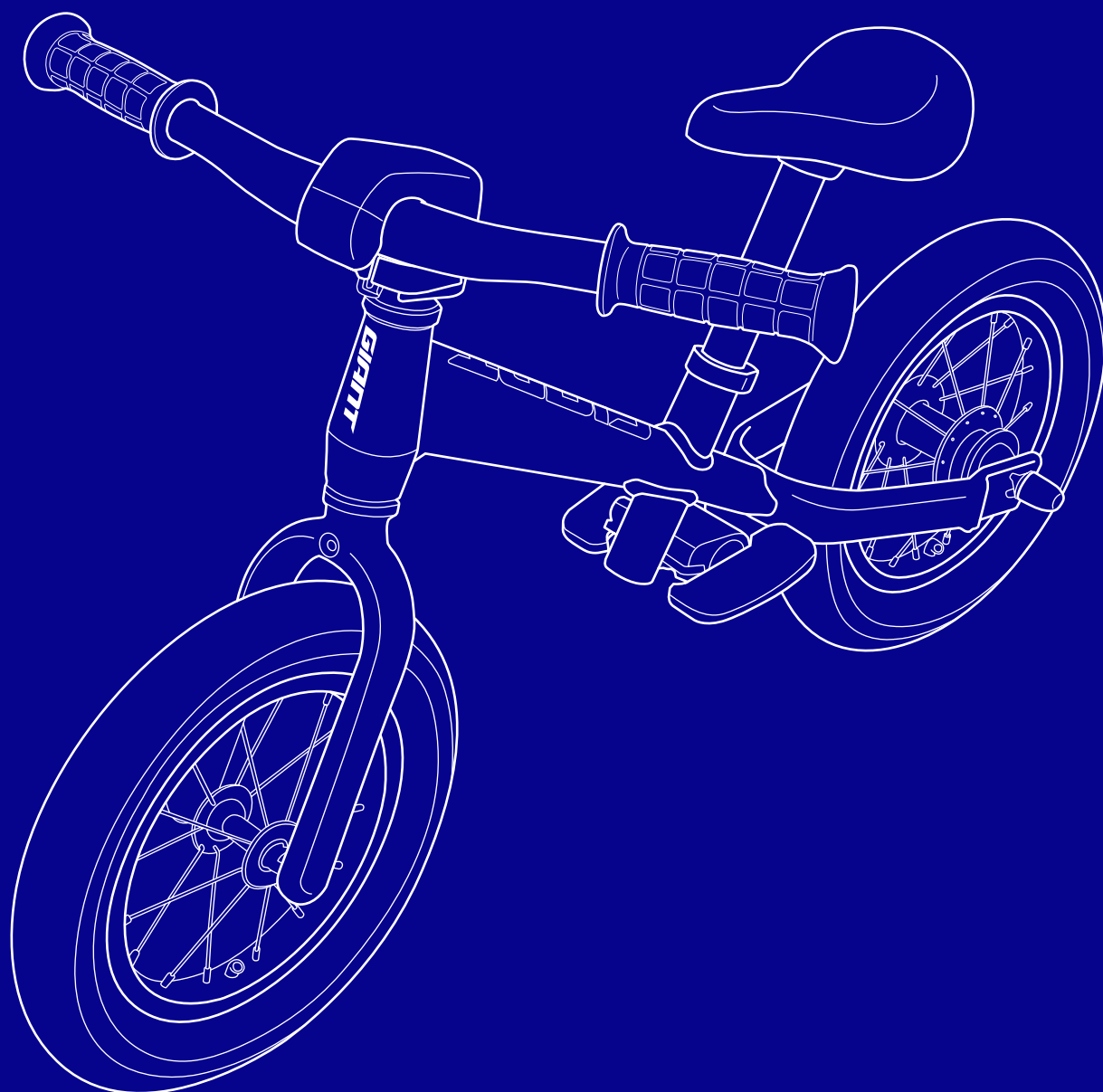


# PRE

## THE PRE KID BIKE ASSEMBLING MANUAL



**GIANT**



## INTRODUCTION

Thank you for choosing Giant's youth bikes. We believe a memorable childhood always has the bicycle accompanying, and Giant youth bikes is fortunate to be part of this journey. Consistent with our goal to "unleash each rider's potential," Giant youth bikes deliver the best-in-class quality and performance for kids enjoying every moment in riding.

## MANUAL INTENDED USE

This bike manual serves to help you achieve the best cycling experience and maintain safety while riding. In this manual, every part of the bike is illustrated clearly, while guiding you through the detailed steps to assemble your youth bike. However, this manual does not replace the general bicycle owner's manual.



### WARNING 1

Be sure to thoroughly read and understand the warnings and instructions in this manual before riding the new bicycle. Not every bicycle is built for every activity. Ask an authorized Giant retailer to clarify the intended use of your bicycle.

### WARNING 2

Giant bike assembly should follow the suggested instructions, and the bolts should be tightened to the recommended torque if indicated. Ensure you follow the instructions and bolt torque in every assembly step. Giant assumes no liability to any product with the incorrect installation.

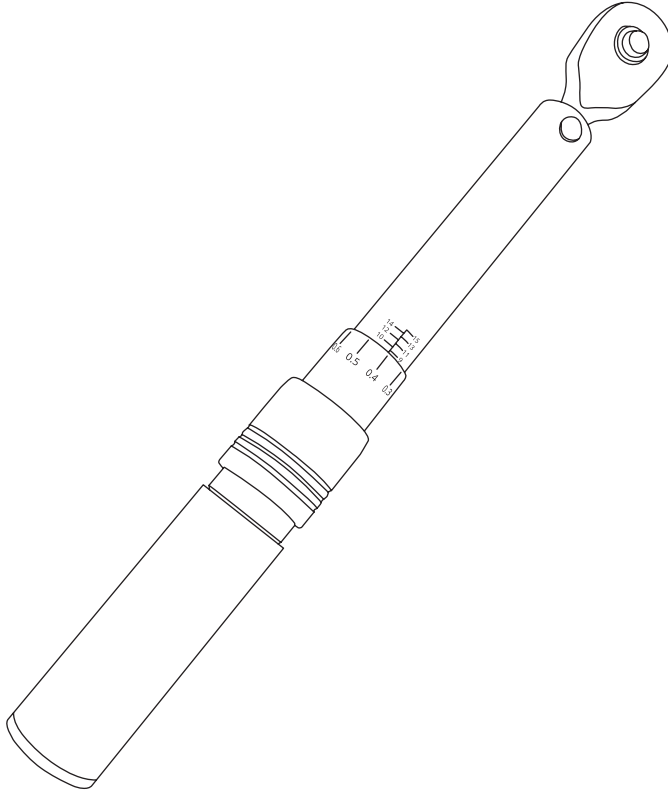
### WARNING 3

Bicycle assembly is a complex operation and requires training and experience. If you are unsure about your ability and tools, please consult an authorized Giant dealer for assistance and installation. Failure to follow this warning may cause the bicycle to malfunction, which may result in serious injury or death.

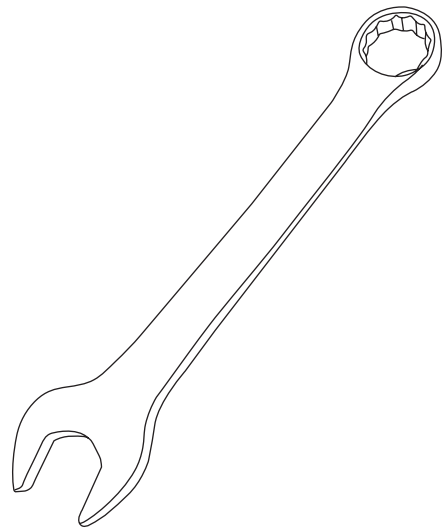
### WARNING 4

Before the bike riding, please read the caution and warnings, and always comply with regulation of youth bike uses.

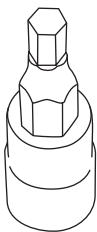
## TOOL LIST



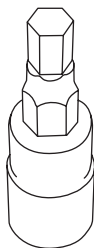
Torque wrench



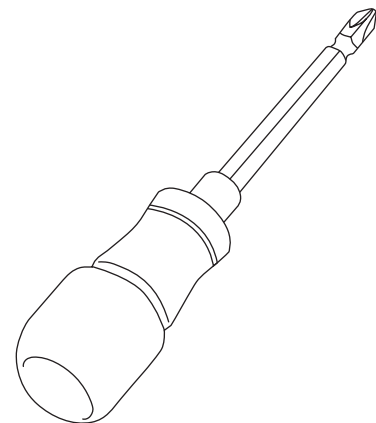
15mm open/box wrench



4mm hex wrench

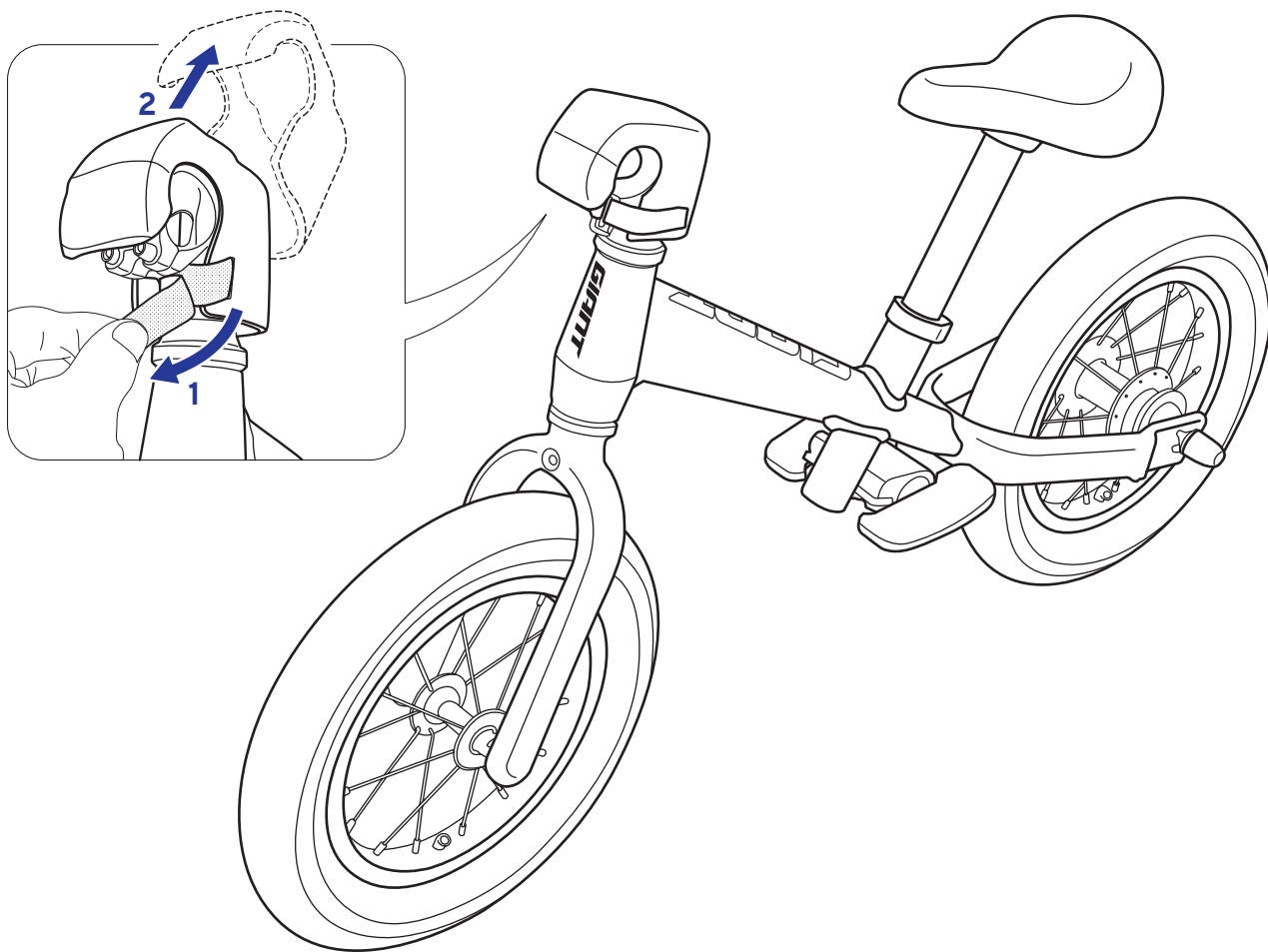


5mm hex wrench

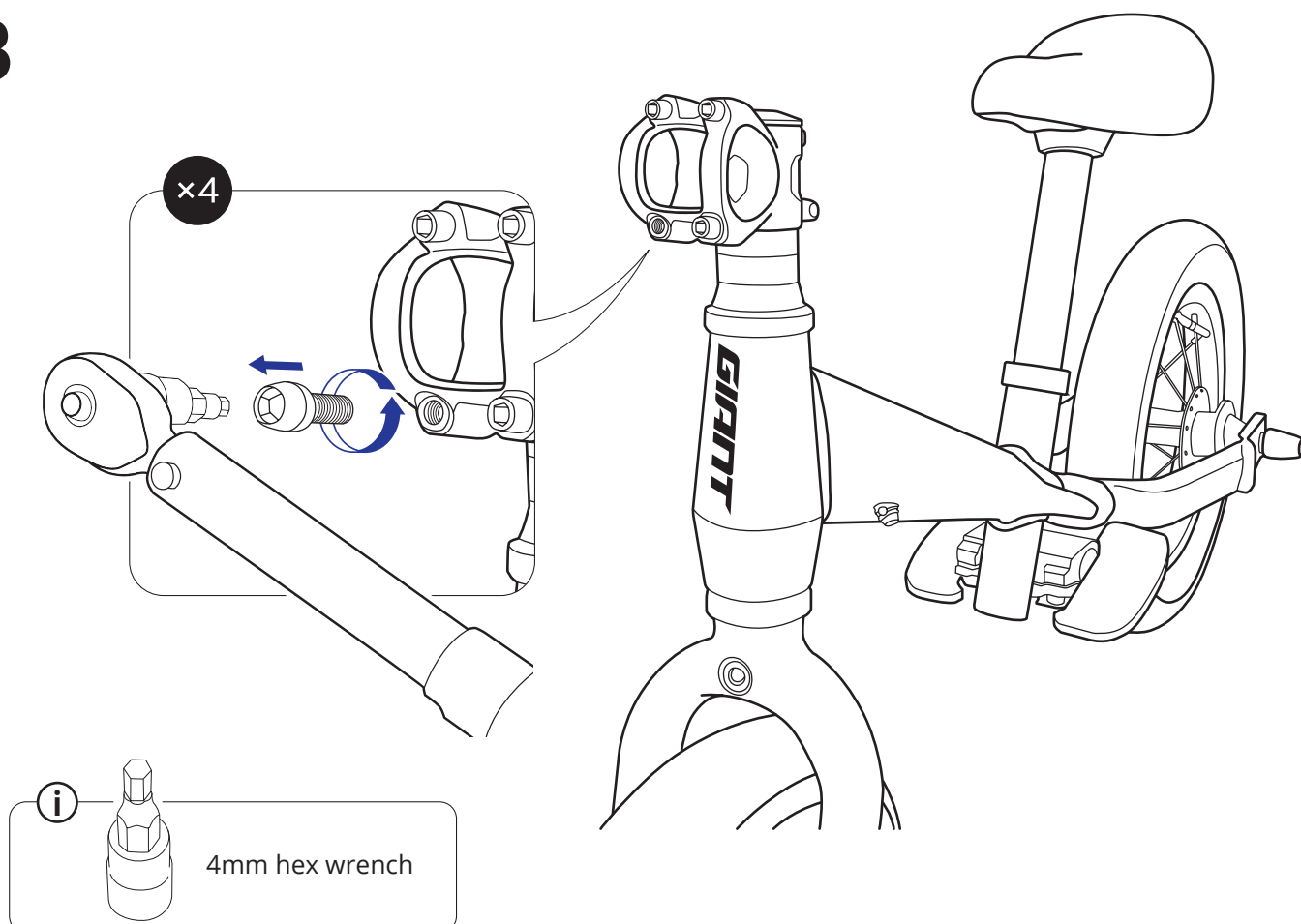


Philips head screwdriver

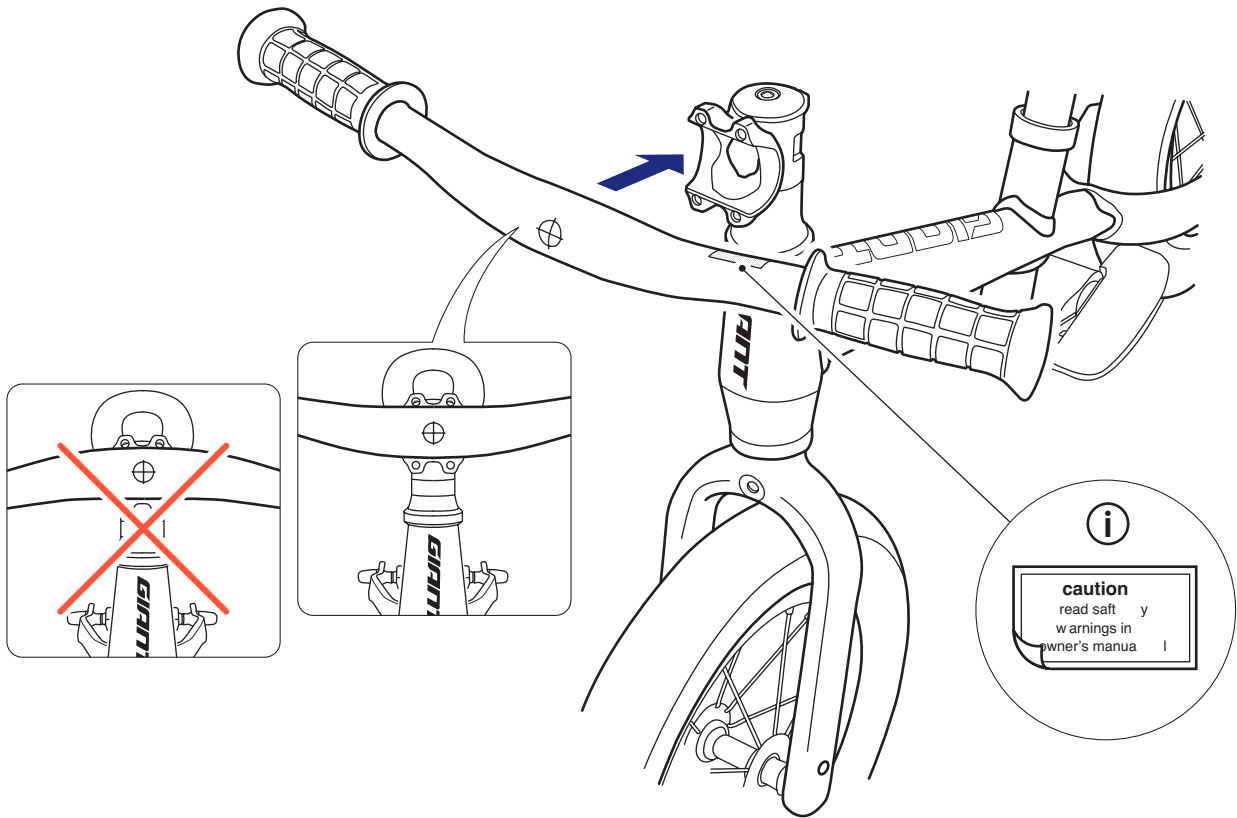
# A



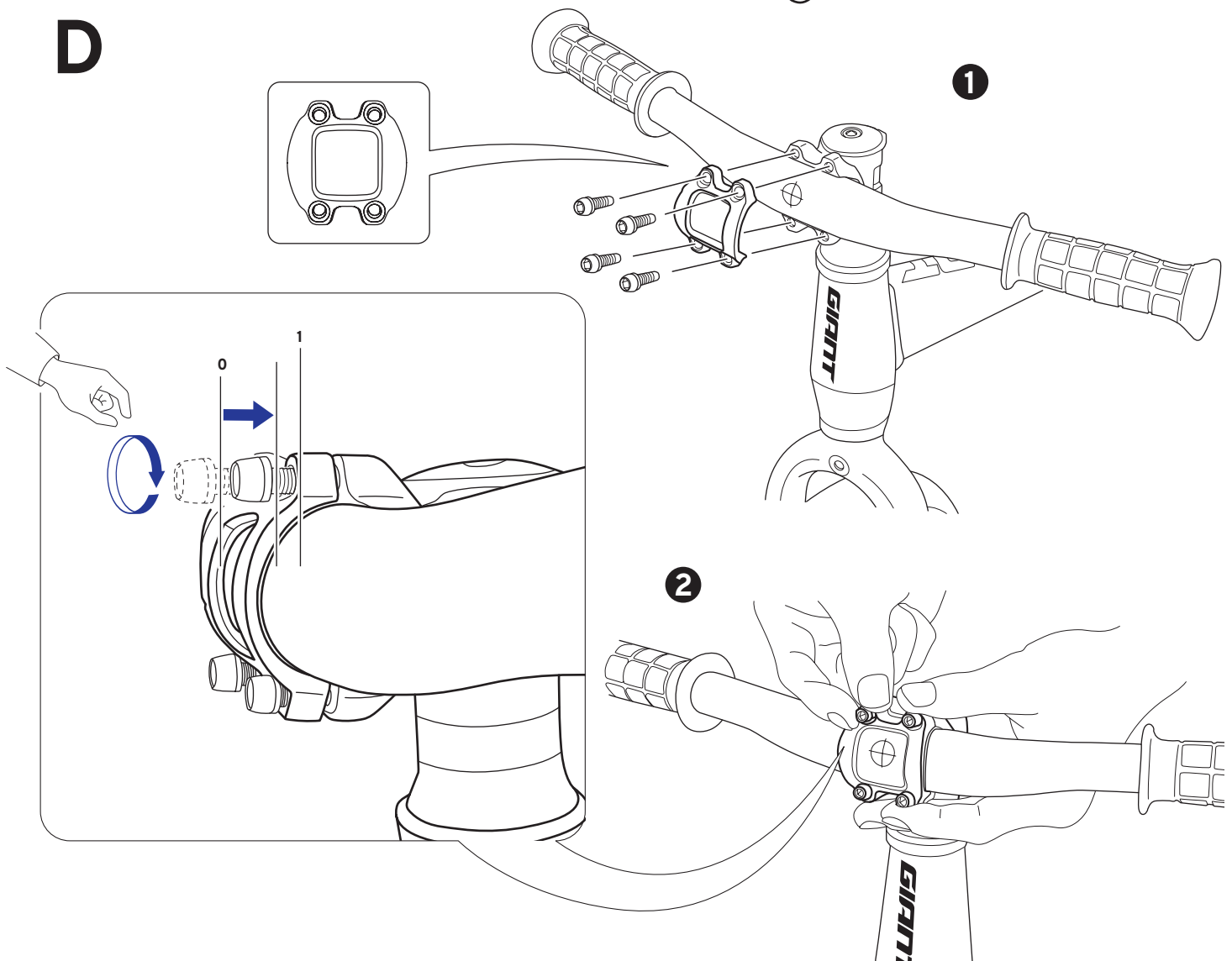
# B



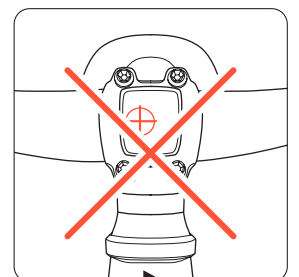
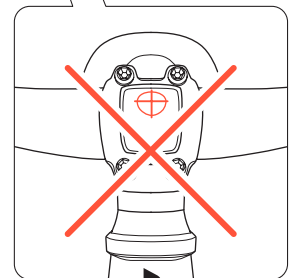
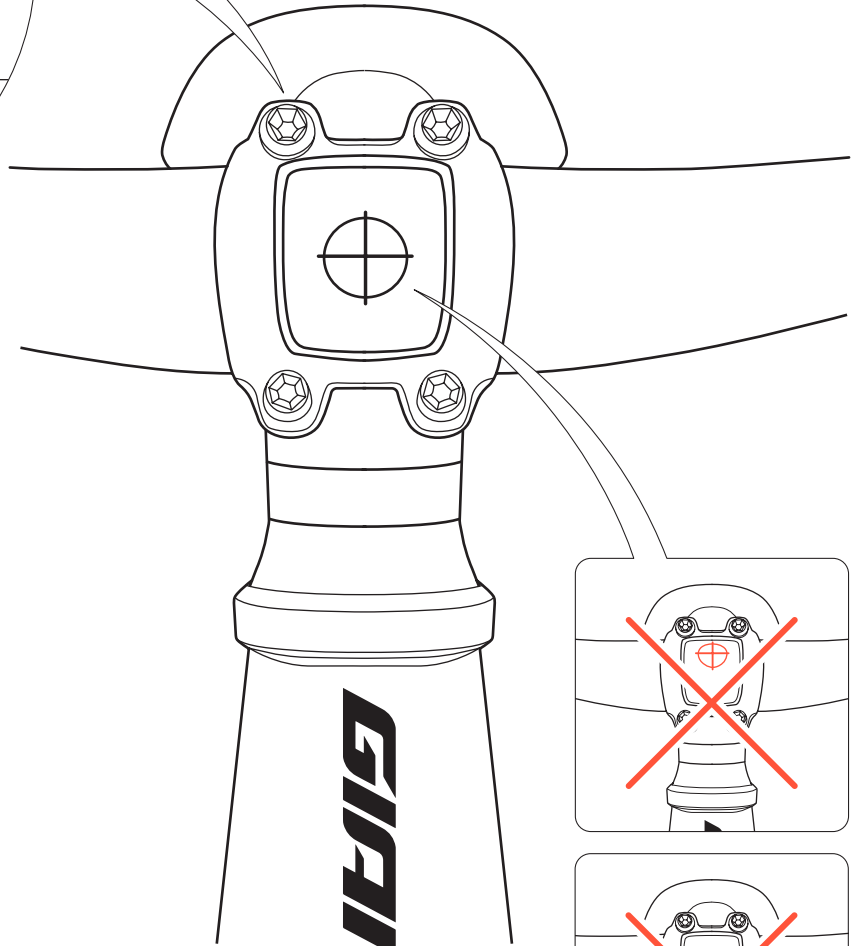
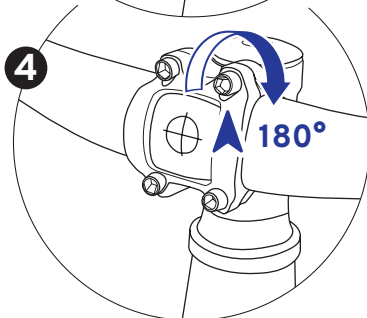
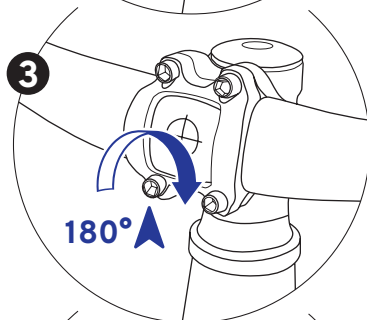
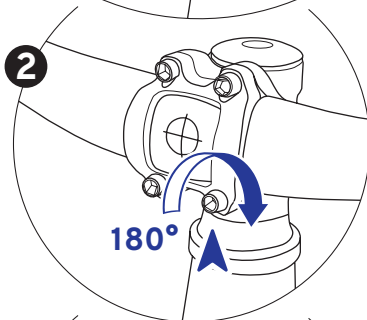
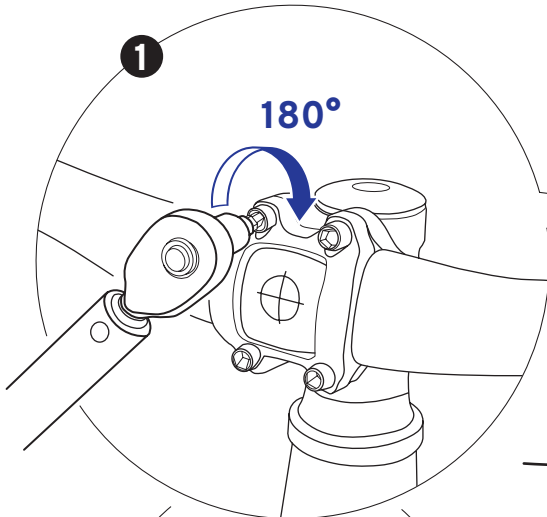
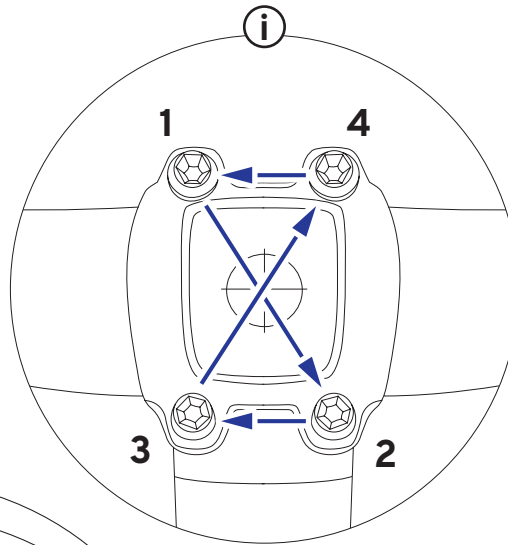
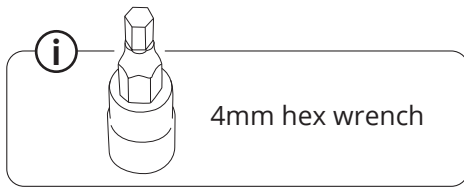
**C**

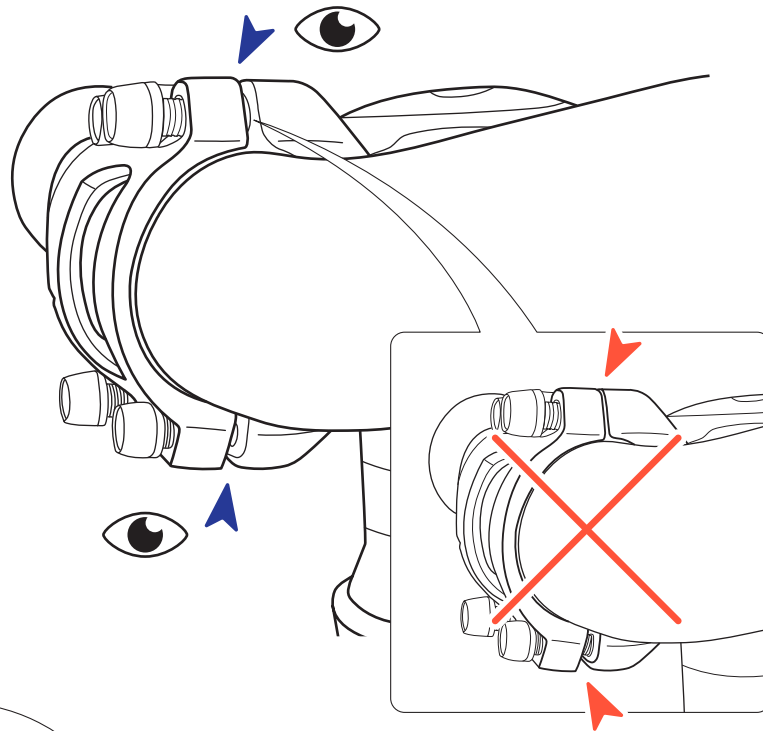
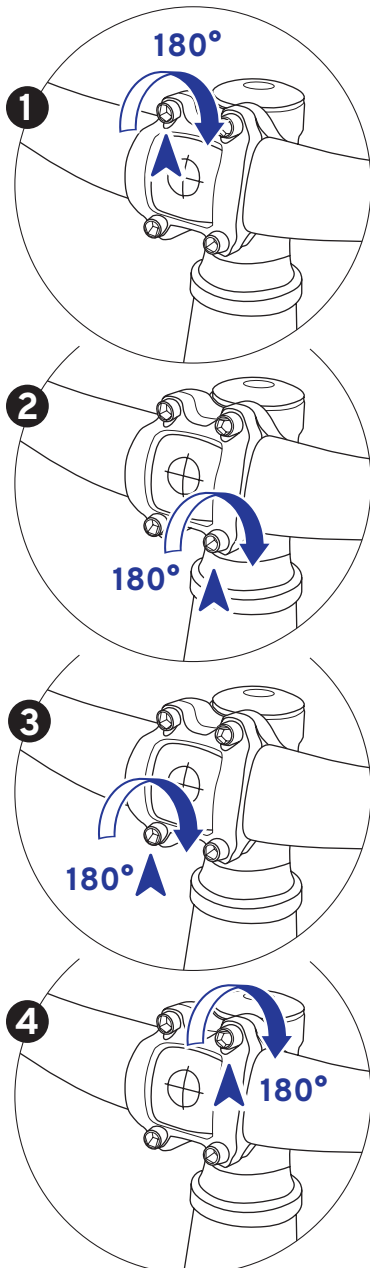


**D**

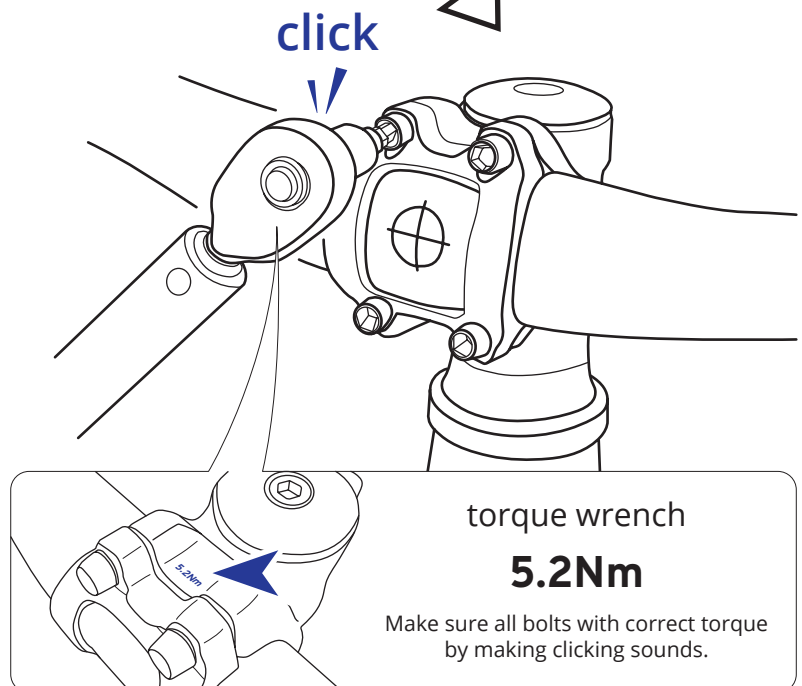
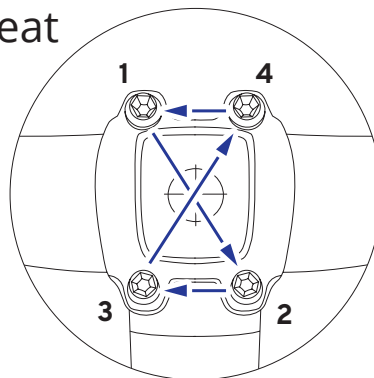


# E

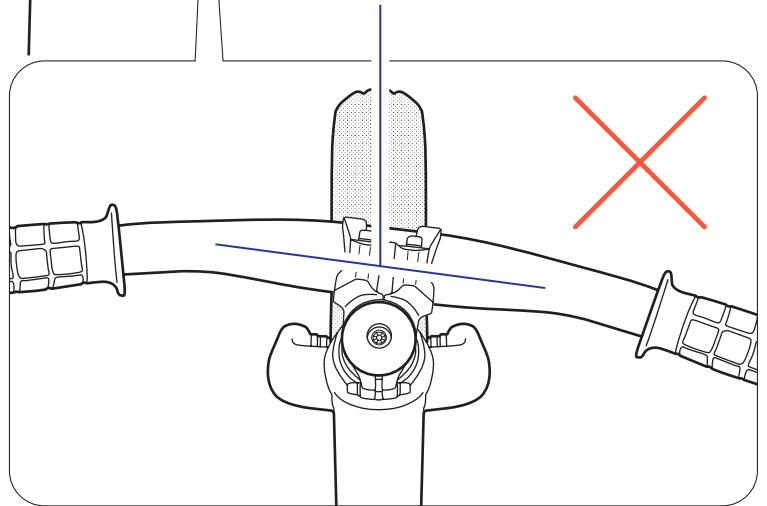
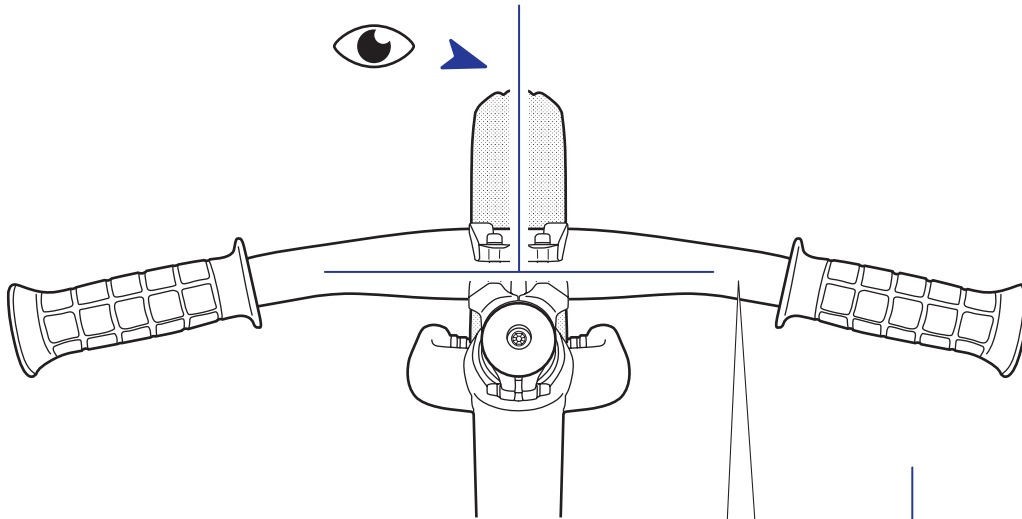


**F****G**

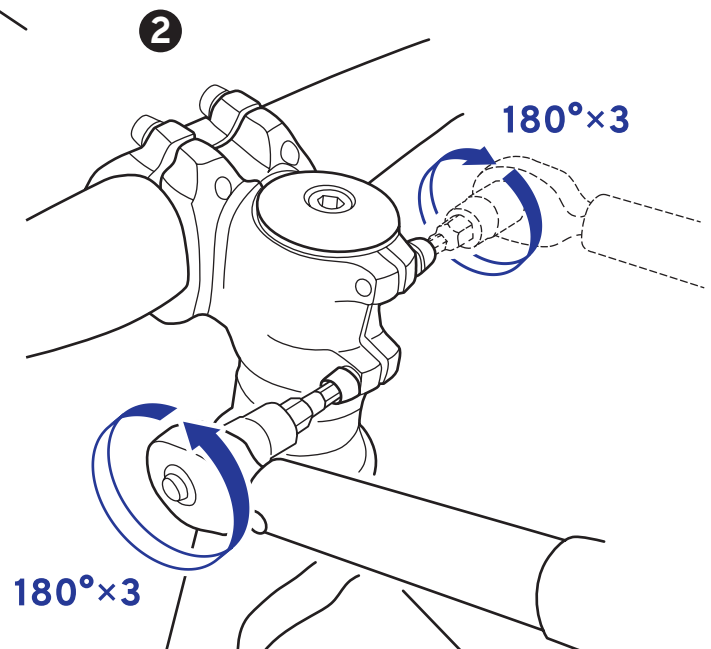
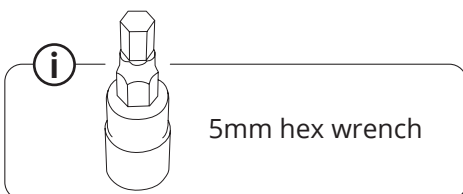
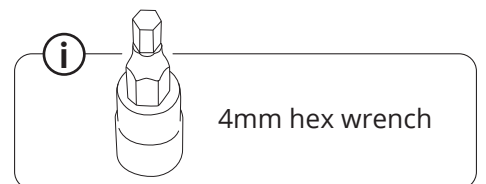
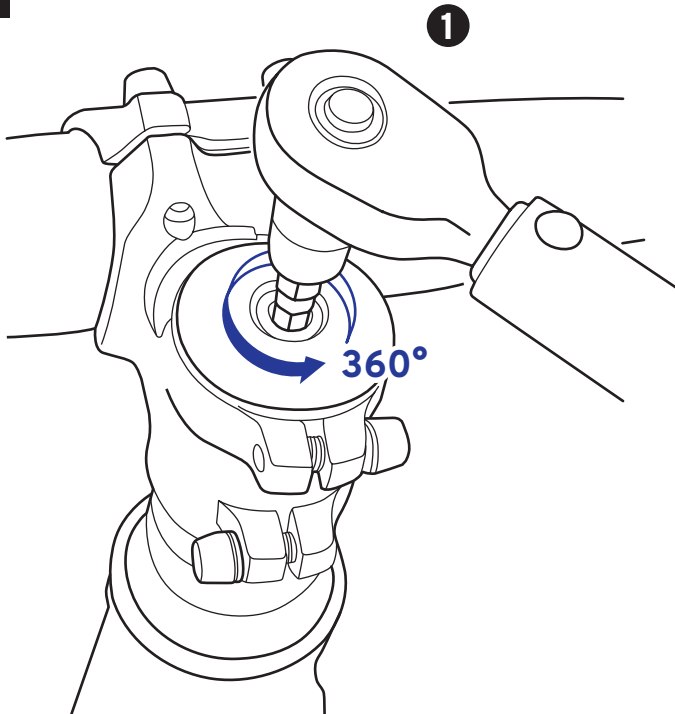
Repeat



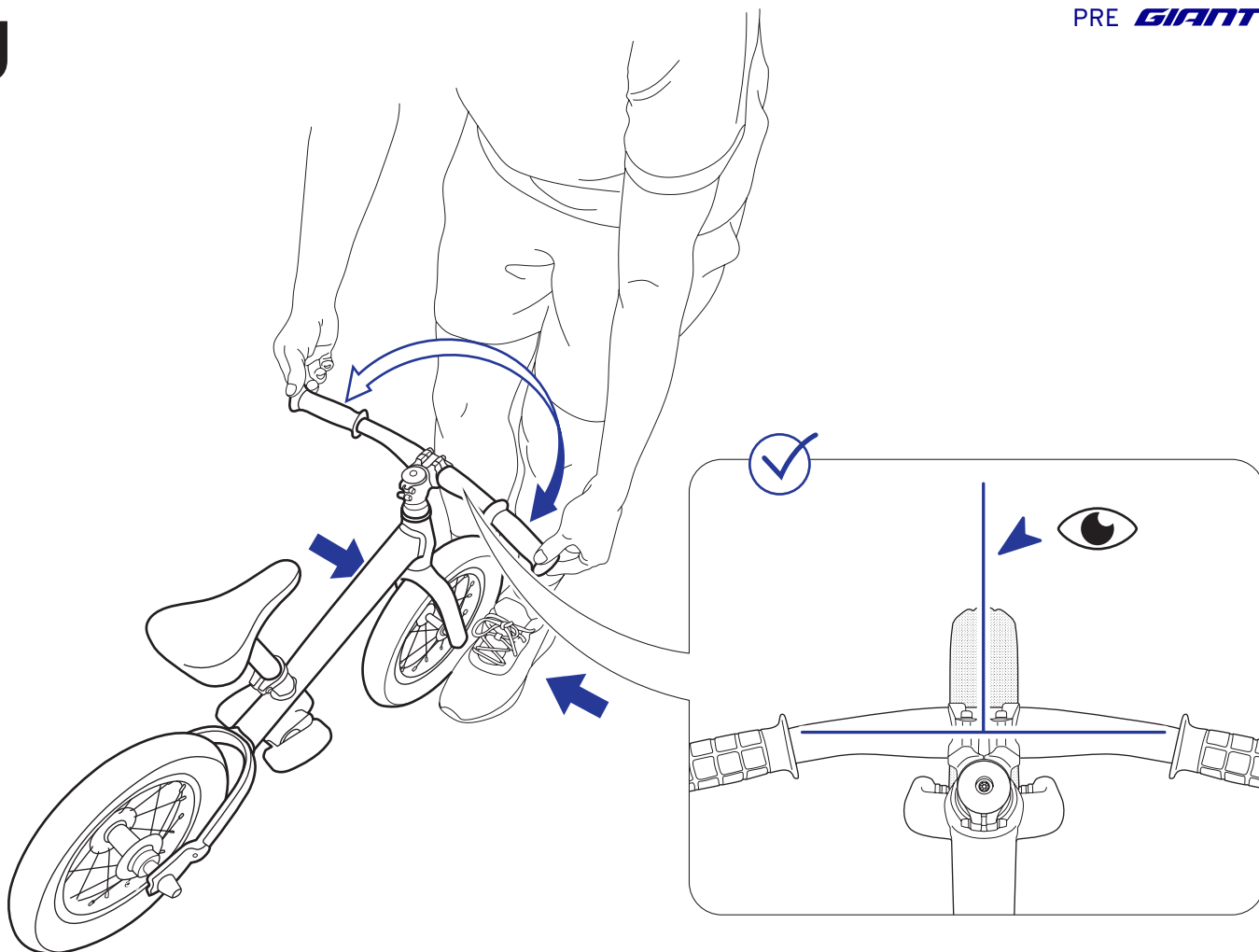
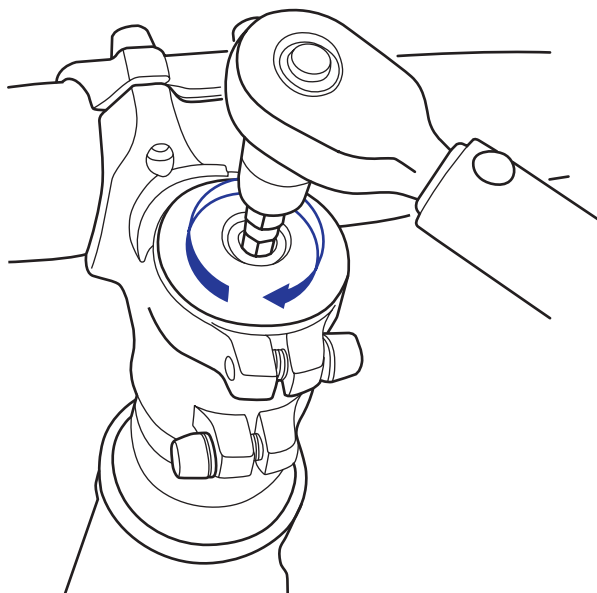
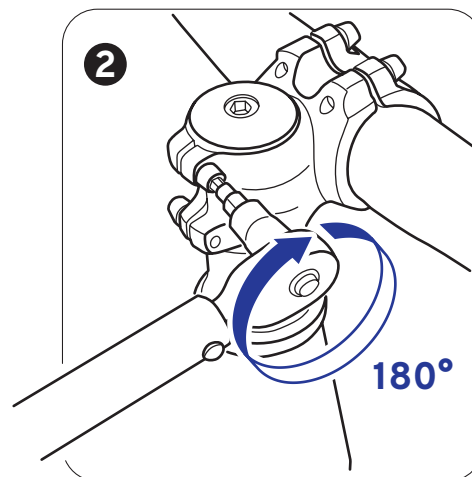
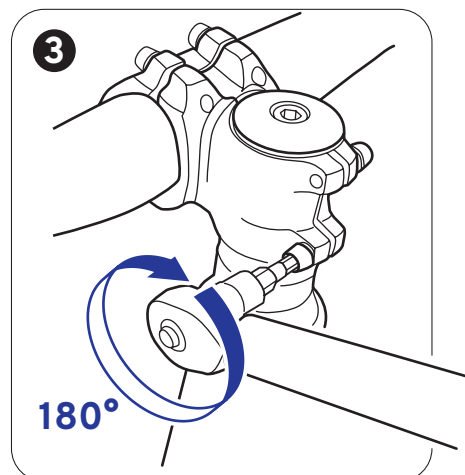
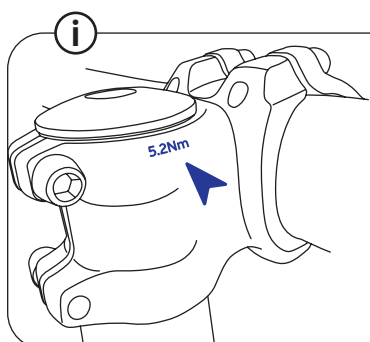
# H



# I





**J****K****1****2****180°****3****180°****i**

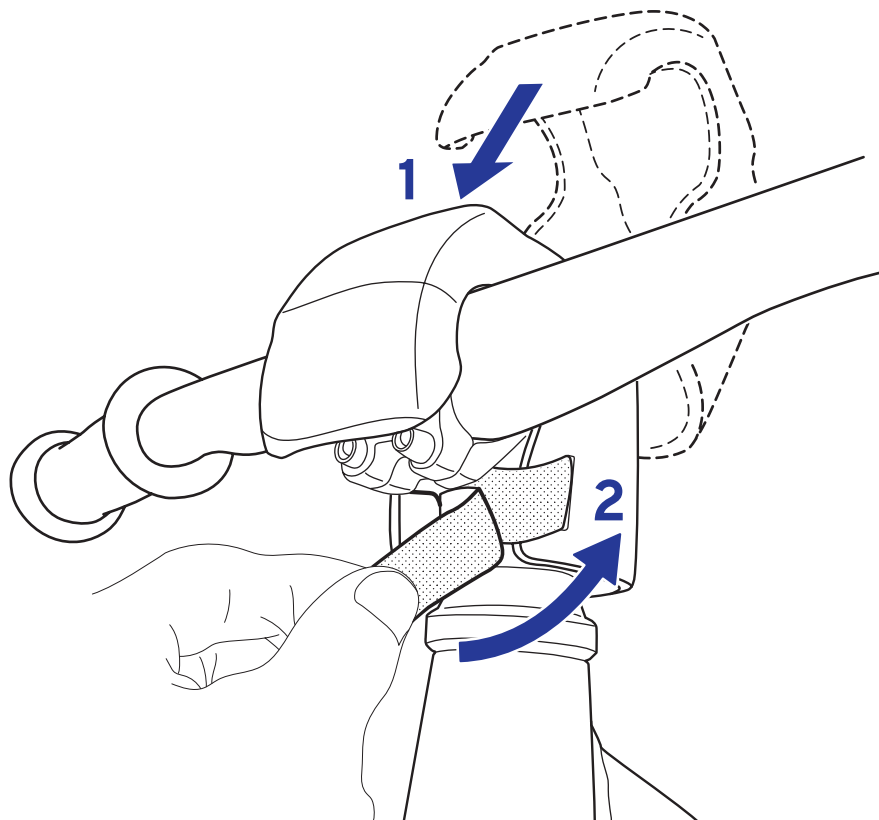
torque wrench

**5.2Nm**

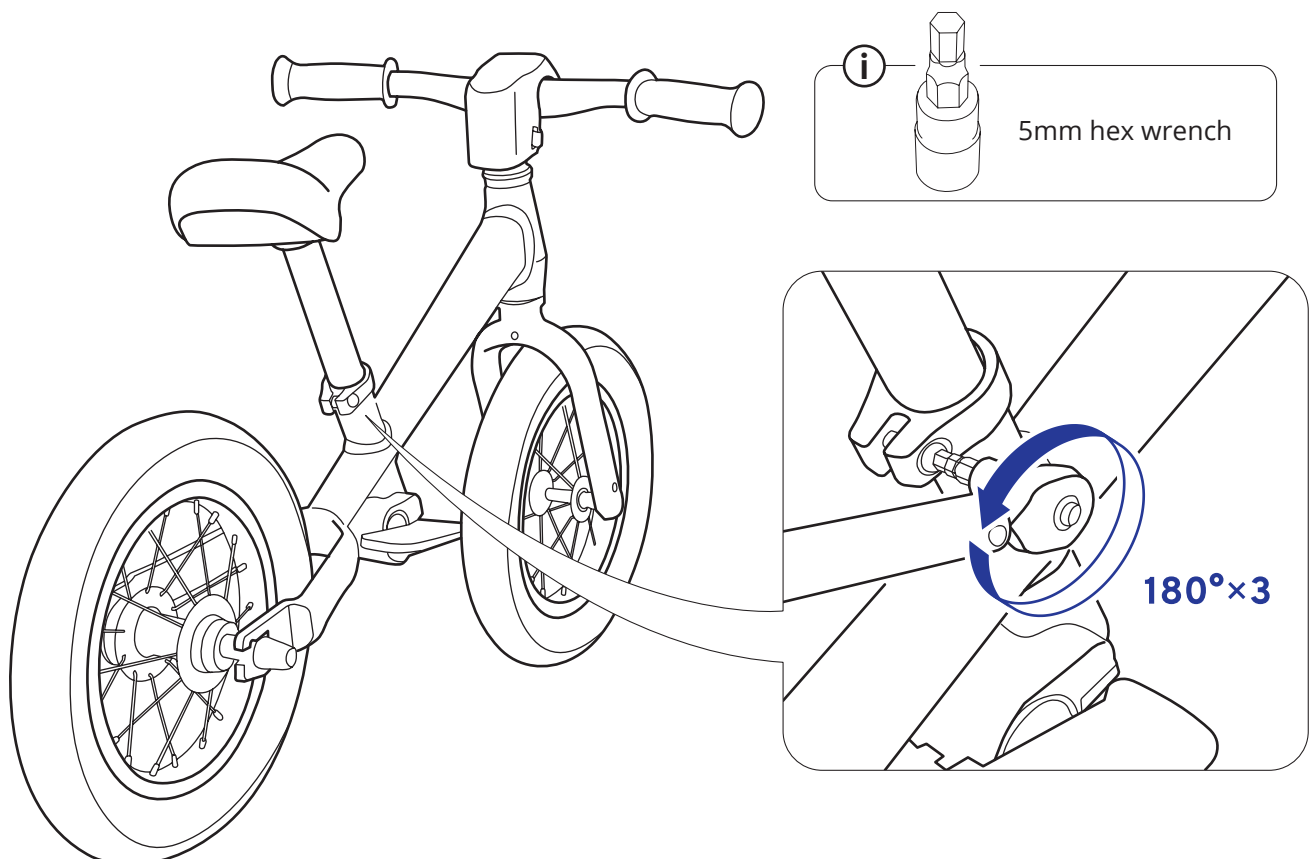
Make sure all bolts with correct torque by making clicking sounds.

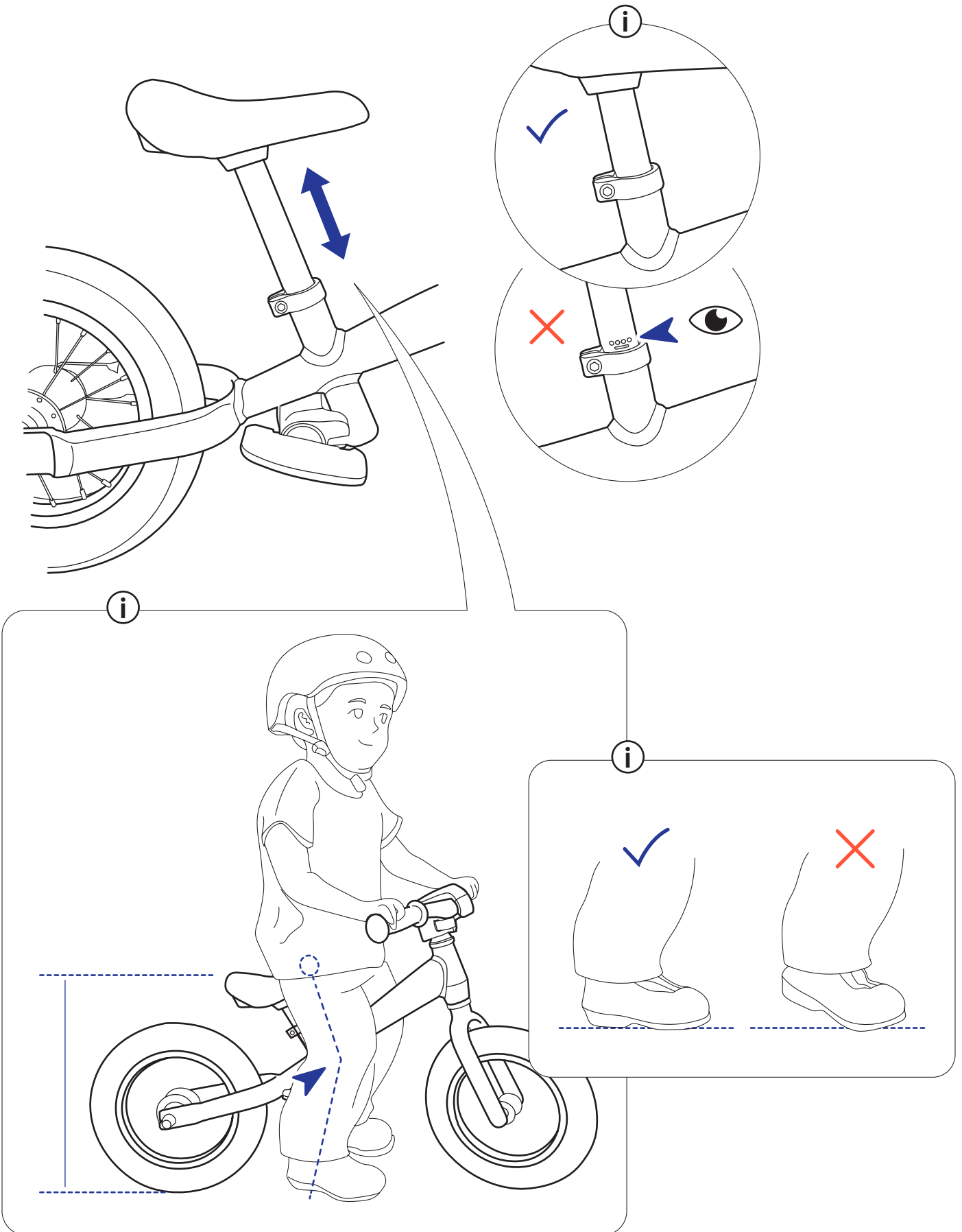


L

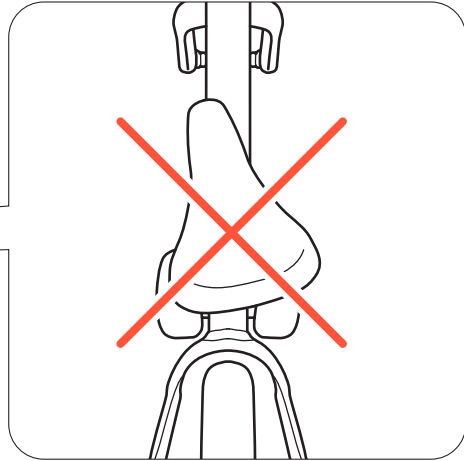
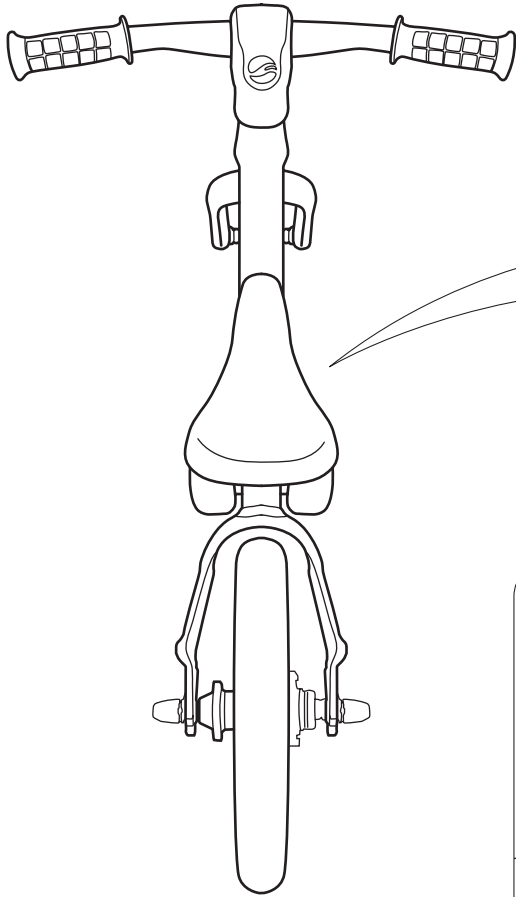


M

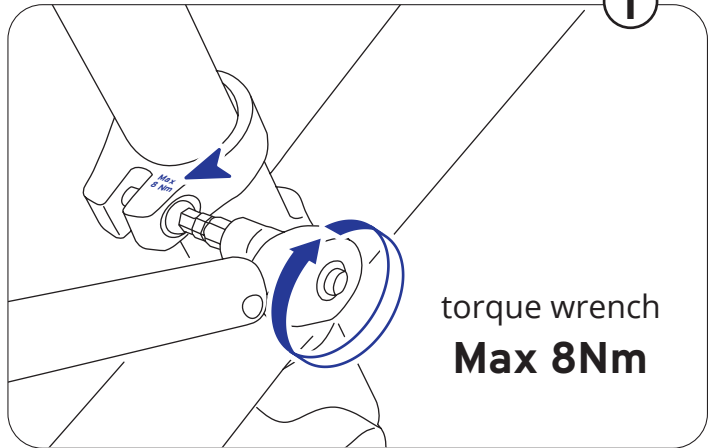




O

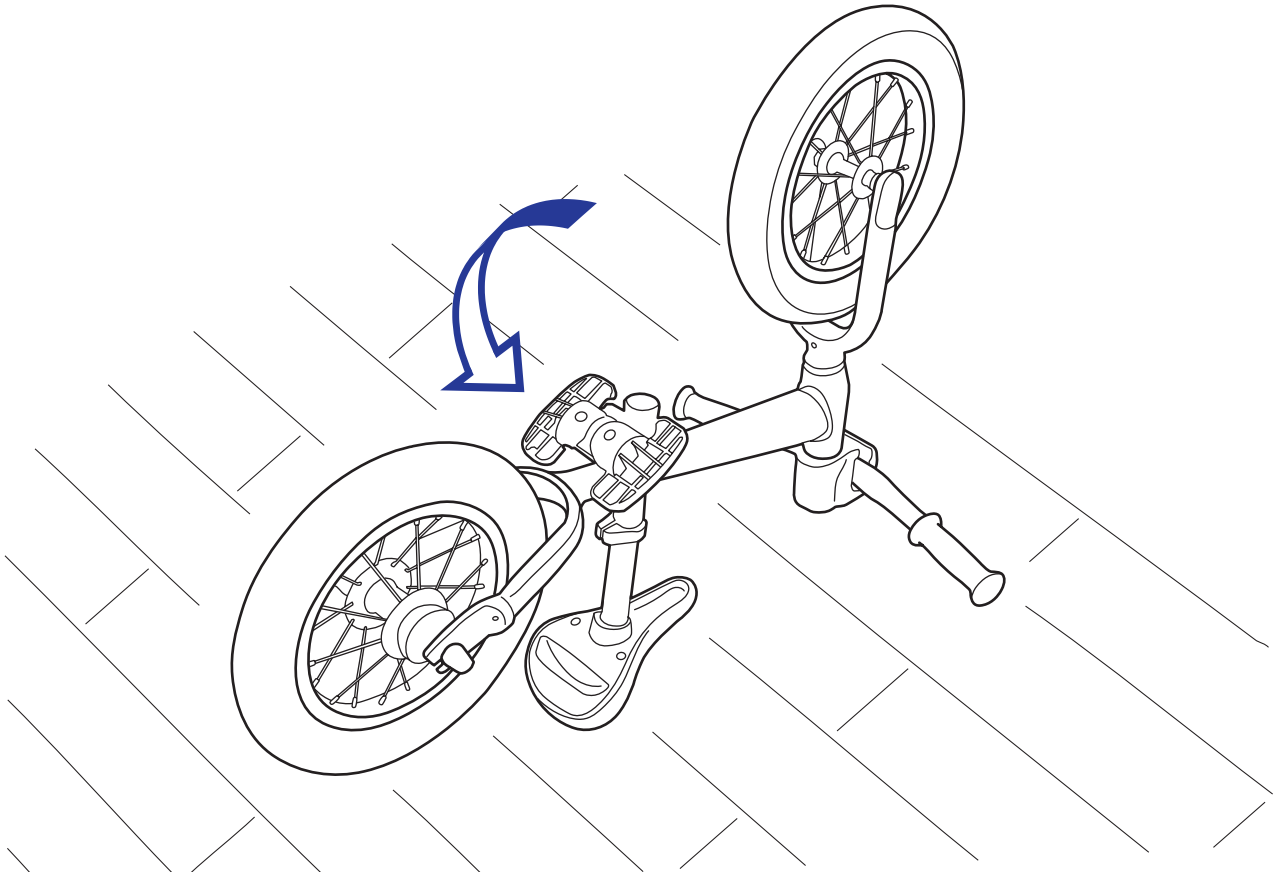


i



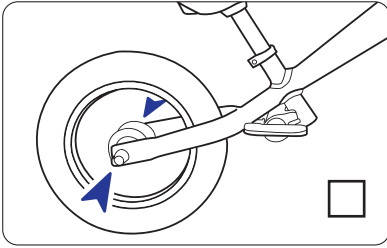
torque wrench  
**Max 8Nm**

P

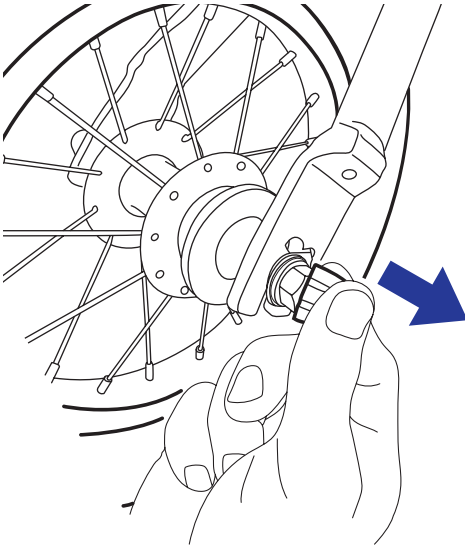


**Q**

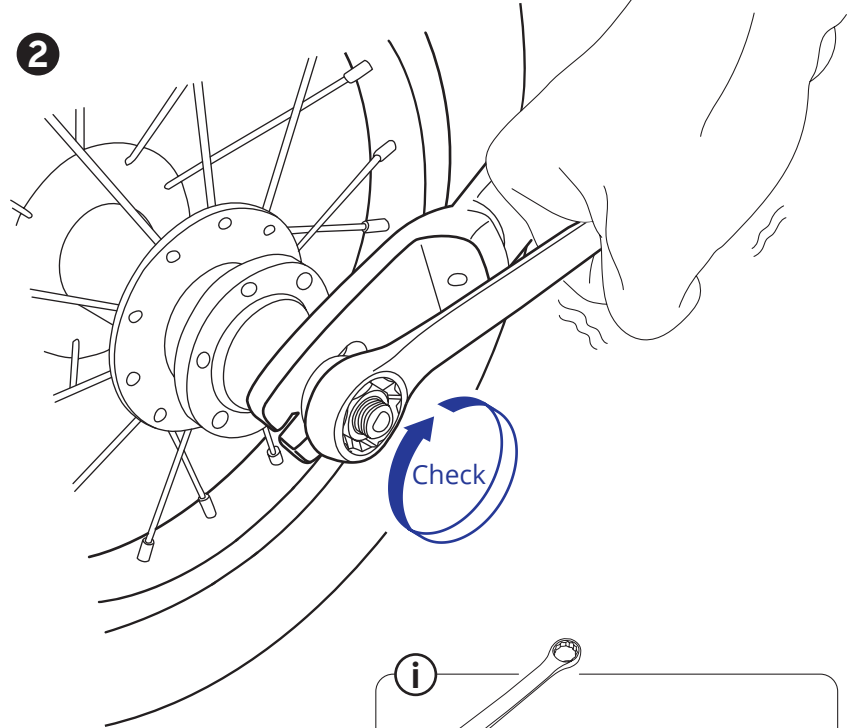
Checkbox



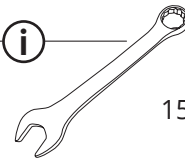
**1**



**2**



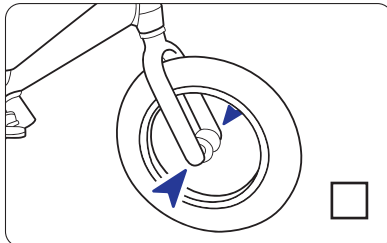
**i**



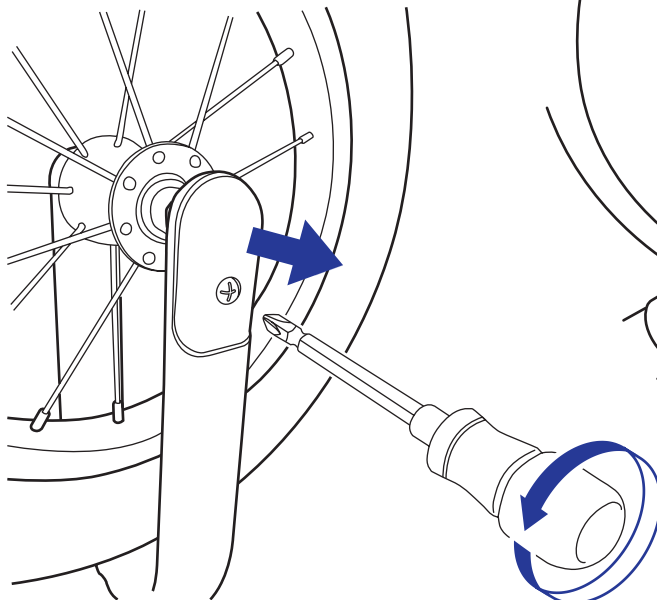
15mm box wrench

**R**

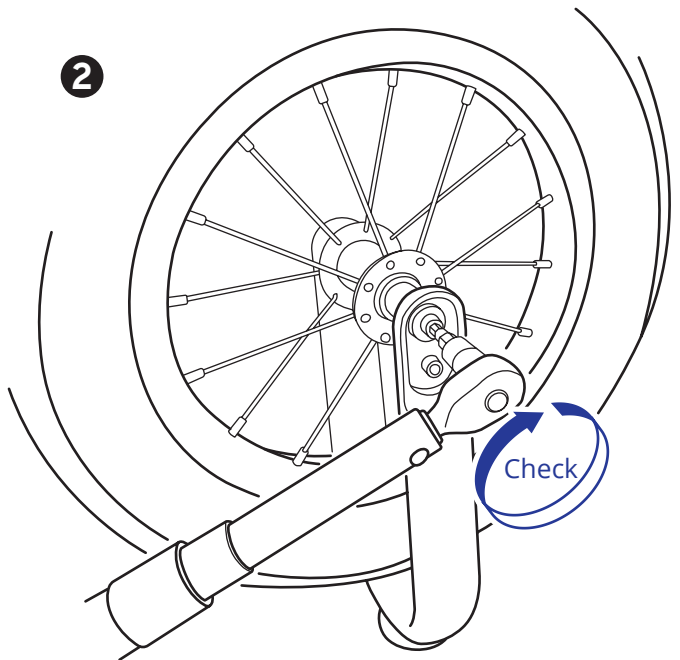
Checkbox



**1**



**2**



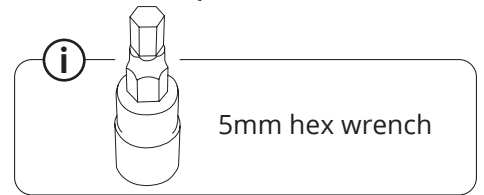
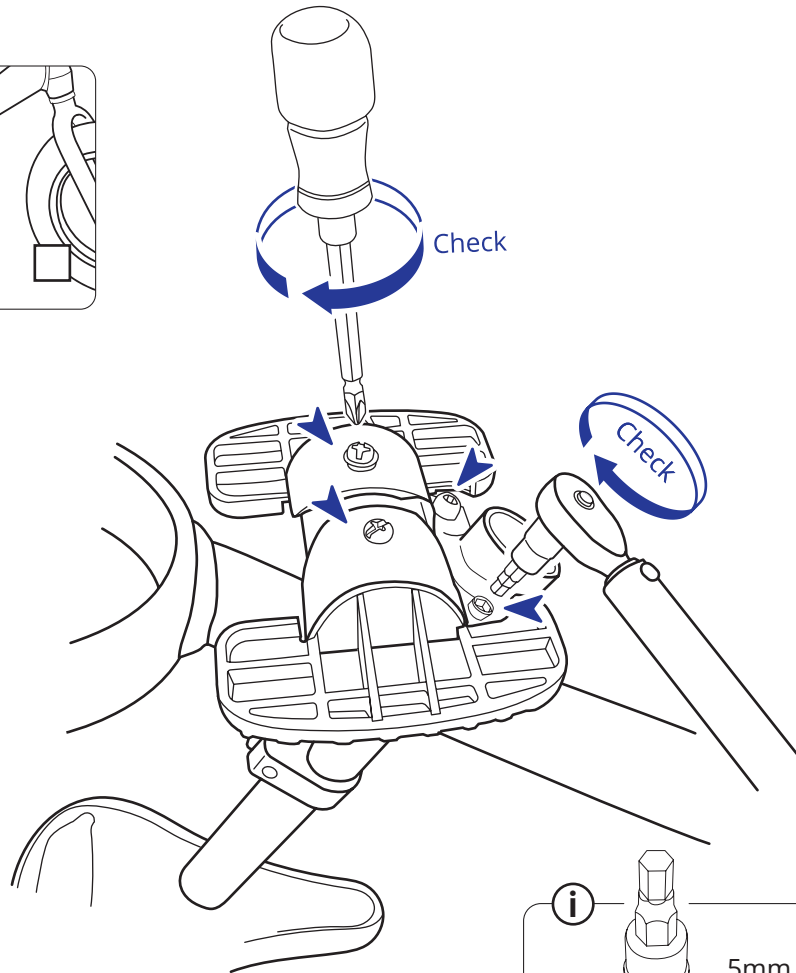
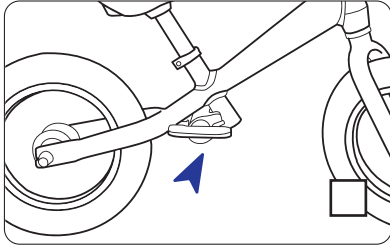
**i**



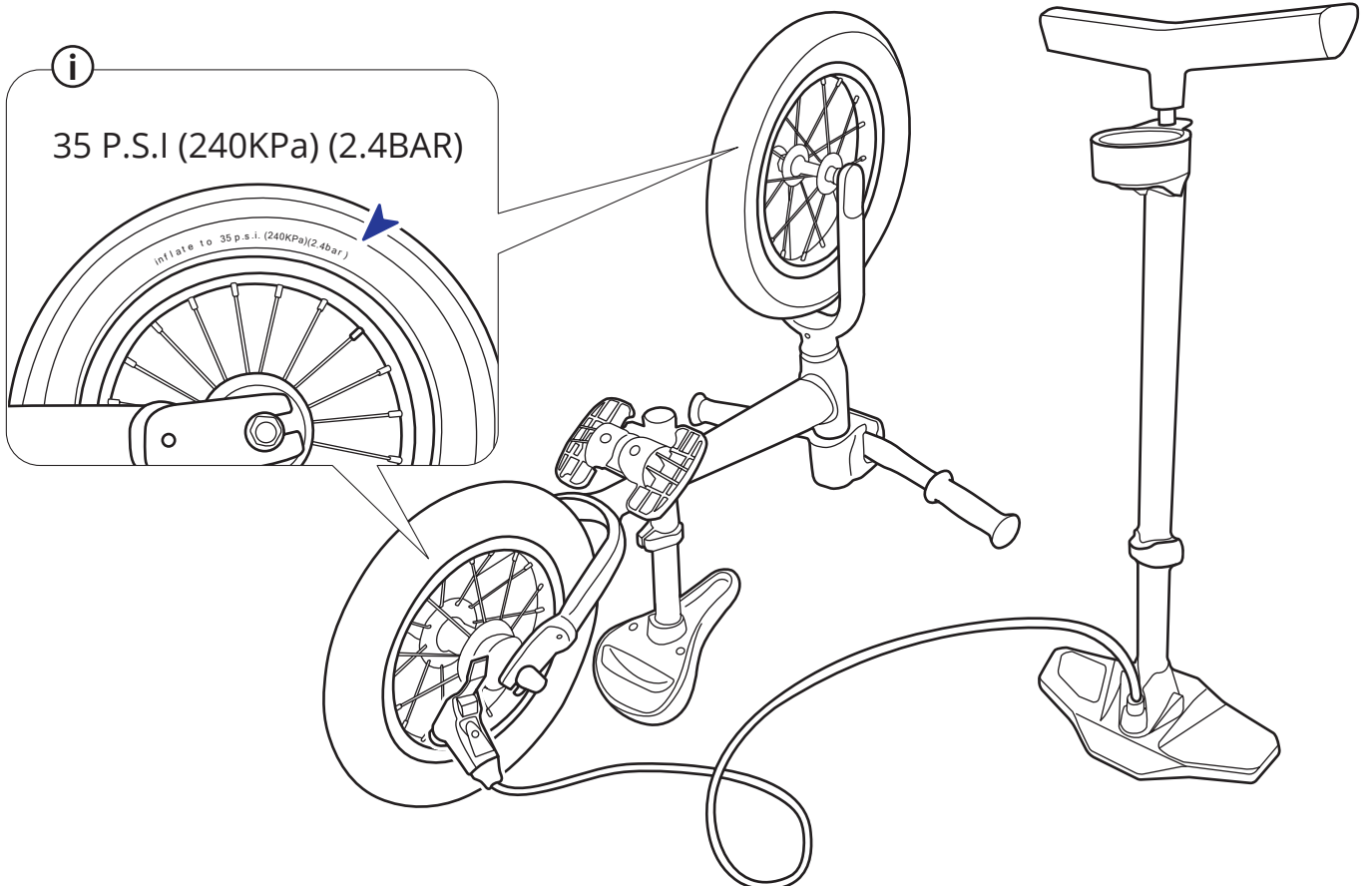
4mm hex wrench

S

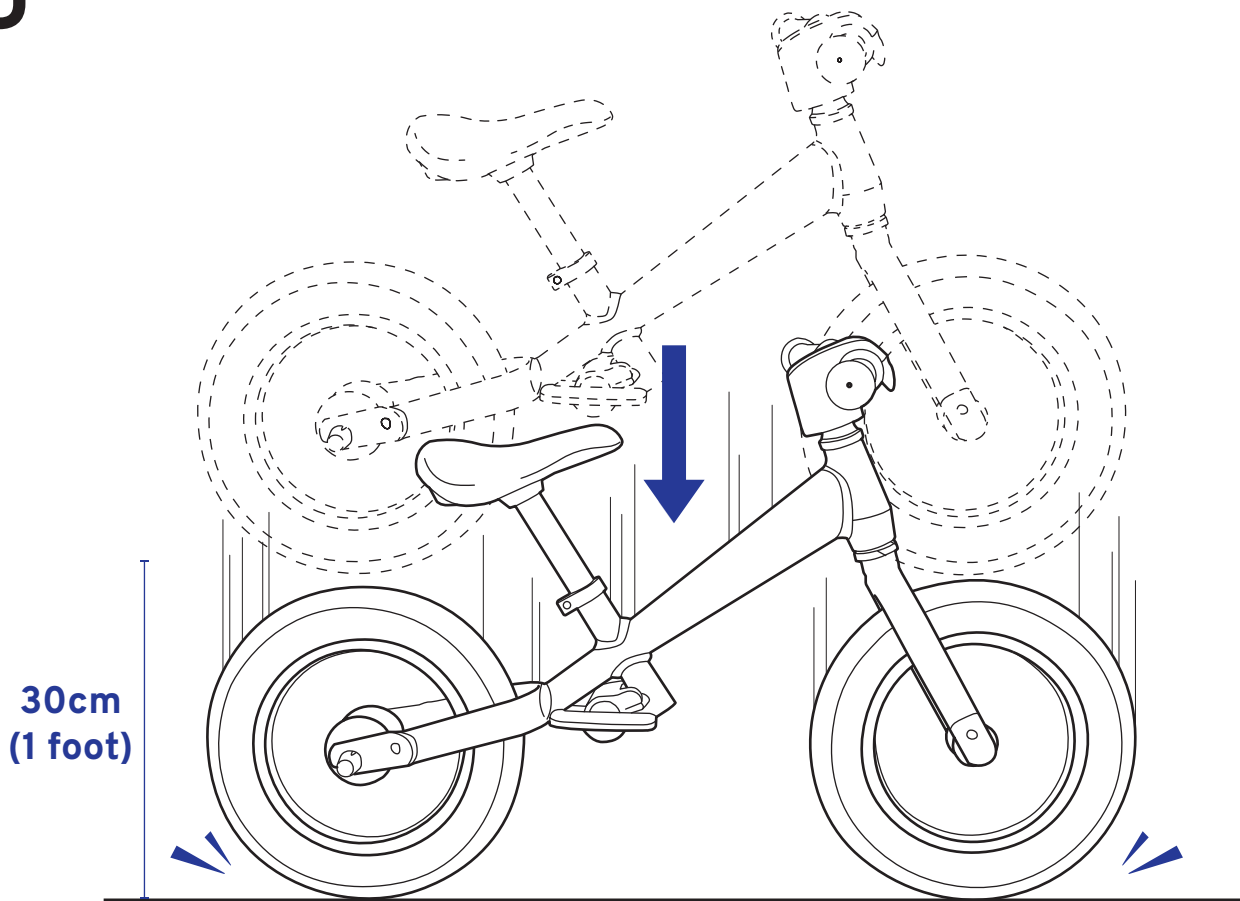
Checkbox



T

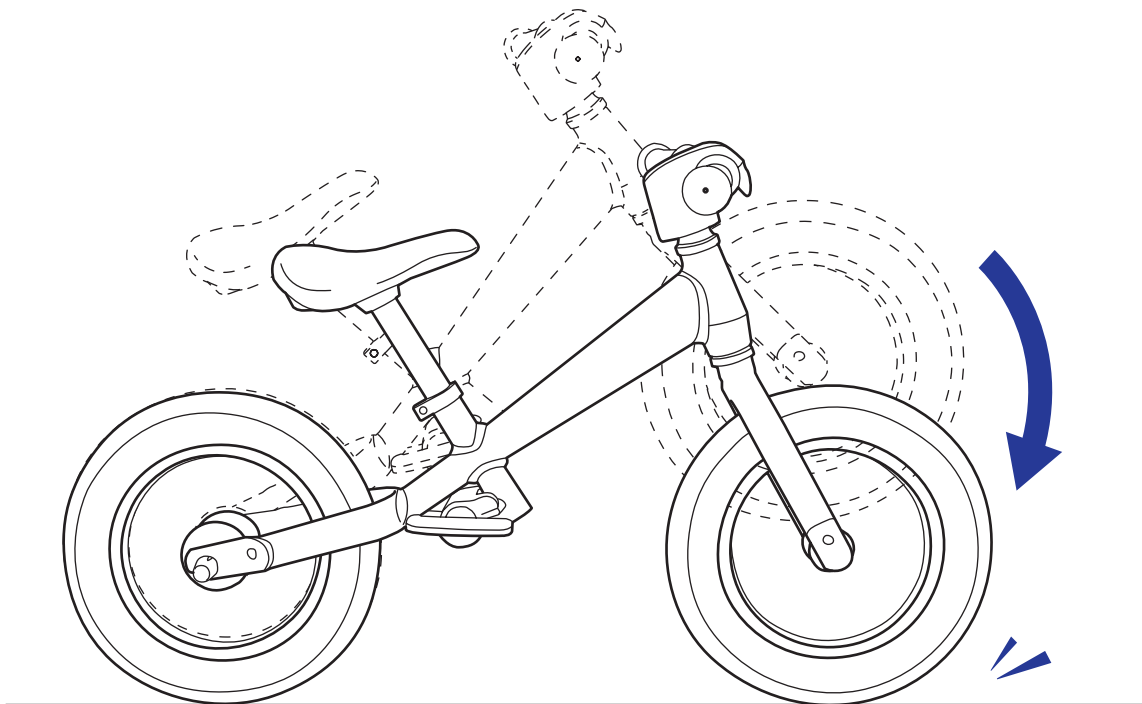


# U

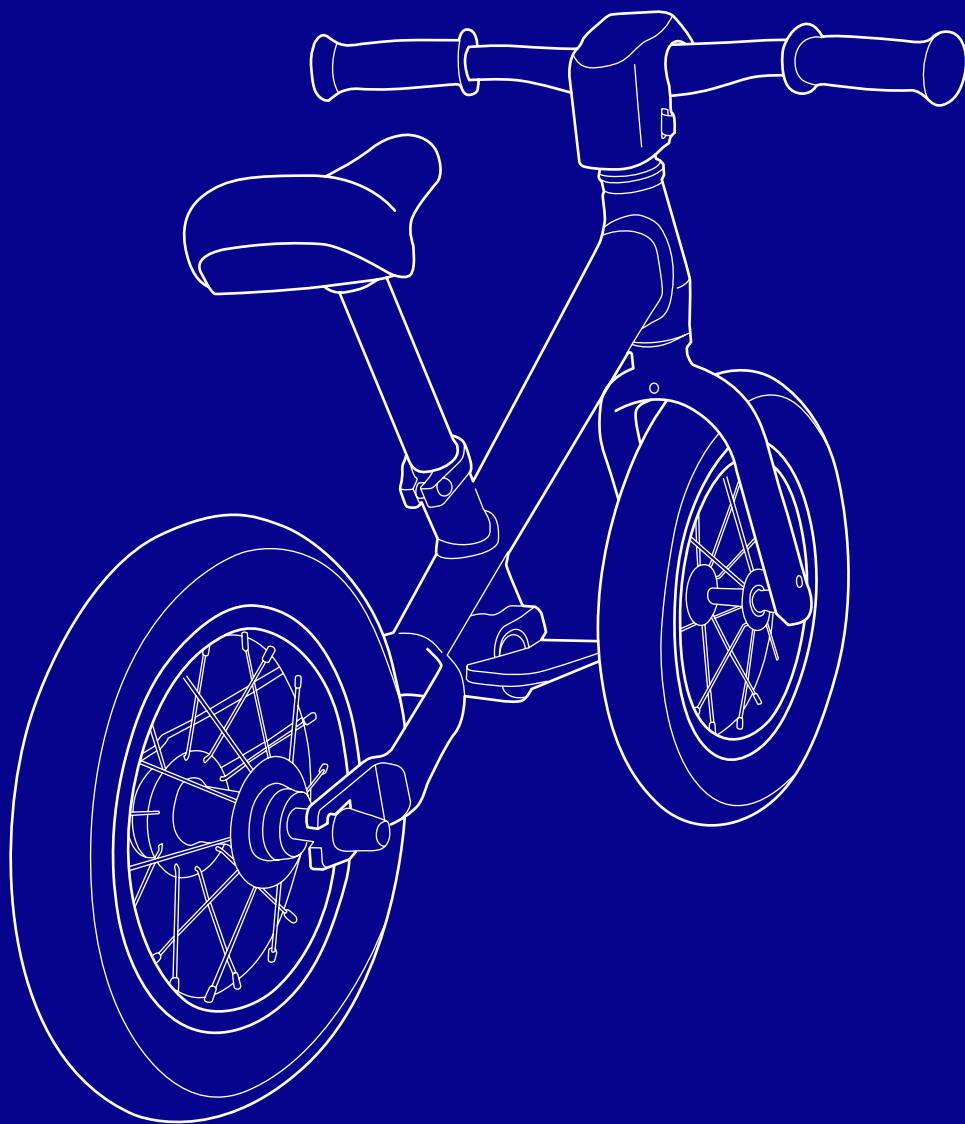


Listen for clunking, rattling noise that suggest there may be loose parts.

# V



Listen for clunking, rattling noise that suggest there may be loose parts.



**GIANT**

THE PRE KID BIKE ASSEMBLING MANUAL

VERSION 1.0